



COOK ISLANDS

**Census of Population and
Dwellings 1996**

MAIN REPORT



COOK ISLANDS
1996
CENSUS OF POPULATION AND DWELLINGS

MAIN REPORT

Recommended Retail Price \$NZ 20.00

STANDARDS

Source

All data in this report is compiled by the Statistics Office except where otherwise stated. Any table or material maybe reproduced and published provided that acknowledgement is made of the source.

Symbols

The following symbols have been used in this bulletin and should be interpreted as follows:

- nil or zero
- .. not applicable
- ... not available
- too small to be disclosed

Values

All values are in New Zealand dollars except where otherwise stated.

STATISTICS OFFICE

Ministry of Finance and Economic Management

P.O. Box 41

Avarua, Rarotonga

Phone: (682) 29-511

Fax: (682) 21-511

E-mail: stats@cookislands.gov.ck

December 1997

FOREWORD

This document, the Cook Islands report on the 1996 Census of Population and Dwellings, is not only important but useful as well as every reader will come to realise.

This report presents a wealth of information on the demographic, social and economic situation of the Cook Islands. It helps us understand who we are and where we've come since the last census in 1991. It also provides information on the diversity of activities throughout our islands.

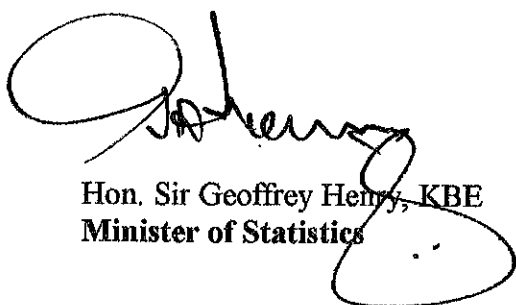
Although this Census was conducted in a period of crisis during which the country was undergoing a major economic and social restructuring process, including the rightsizing of the public sector, it has to be seen as a complete success.

I would like to praise the people of the Cook Islands who gave their invaluable support and cooperation to this national undertaking. Census Supervisors and Enumerators who did most of the hard fieldwork need to be commended for their efforts and dedication during the enumeration period. It is certainly no simple job to visit and extract personal information from every individual and household in the country.

Credit for the successful implementation of the census goes to the Government Statistician, Ms Taggy Tangimetua and her team of hard-working statisticians.

It is with great pleasure that I present this document.

Kia manuia,



Hon. Sir Geoffrey Henry, KBE
Minister of Statistics

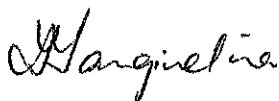
PREFACE

The intention of this report is to present an overview of the Cook Islands population as enumerated on December 1st 1996 in the Census of Population and Dwellings.

This is the second of many reports relating to the 1996 Census that this office will be producing. The first report was the preliminary census results, released in December 1996 soon after the count. Reports presenting detailed information of each island of the Cook Islands will be published along with demographic profiles to satisfy the decision-makers of this country and all other users.

Special mention should be made of Mr Rob Solomon, Economic Statistician/MIS Specialist, who has assisted in the planning of the Census leading to the production of this report and also to Ms Ani Koroa who has been given the tough task of co-ordinating this operation. Census supervisors and enumerators need also be commended for their efforts in this operation (*a full list of those involved can be found at the end of this report*).

At this point I would like to acknowledge the 9 staff of the Statistics Office whose workload has been extremely strenuous due to the short time period for the preparation of the census. They must be commended for undertaking this task while continuing to produce the wide range of statistical series, which we are committed to on a regular basis.



Taggy Tangimetua
Government Statistician

TABLE OF CONTENTS

1	GENERAL INFORMATION.....	7
1.1	Introduction.....	7
1.2	Setting	7
2	CENSUS RESULT	9
2.1	Population Structure	9
2.2	Social Characteristics.....	13
2.3	Economic Characteristics.....	15
2.4	Household Characteristics	18
2.5	Housing/Dwelling Characteristics	20
3	CENSUS METHODOLOGY	24
3.1	Scope and Coverage.....	24
3.2	Census Questionnaire.....	24
3.3	Field Work	24
3.4	Data Processing.....	25
3.5	Tabulation	26
3.6	Concepts and Definitions.....	26
4	CENSUS ADMINISTRATION.....	27
4.1	Organisation and Control.....	27
4.2	Census Budget.....	27
4.3	Technical committee.....	28
4.4	Publicity and the Media	28
4.5	Recruitment and Training of Enumerators	28
5	CENSUS TABLES.....	29
6	QUESTIONNAIRES.....	101
7	ACKNOWLEDGEMENT	103

LIST OF FIGURES

<i>Figure 1: Map of the Cook Islands.....</i>	<i>8</i>
<i>Figure 2: Cook Islands Population Trend, 1902-1996</i>	<i>9</i>
<i>Figure 3: Population Breakdown.</i>	<i>10</i>
<i>Figure 4: Resident Population Distribution 1991-1996.....</i>	<i>11</i>
<i>Figure 5: Population Pyramids 1991 and 1996.....</i>	<i>12</i>
<i>Figure 6: Occupational Classification of Employed Population 1991-1996.....</i>	<i>16</i>
<i>Figure 7: Census Organisation Chart.....</i>	<i>27</i>

LIST OF TABLES

<i>Table 1: Dependency ratio by Islands 1991 and 1996</i>	<i>12</i>
<i>Table 2: Resident Population and Usual Place of Residence.....</i>	<i>13</i>
<i>Table 3: Resident Population by Ethnic Origin.....</i>	<i>14</i>
<i>Table 4: Economically Active Population by Region</i>	<i>15</i>
<i>Table 5: Sector of Employment by Region 1991 & 1996.....</i>	<i>17</i>
<i>Table 6: Income Distribution by Region.....</i>	<i>18</i>
<i>Table 7: Number of Private Dwellings: 1991 and 1996.....</i>	<i>19</i>
<i>Table 8: Total Private Dwellings in 1996.....</i>	<i>20</i>
<i>Table 9: Percentage of Households with Access to Amenities</i>	<i>21</i>

1 GENERAL INFORMATION

1.1 INTRODUCTION

This report contains the final results of the 1996 Census of Population and Dwellings undertaken on 1st December 1996. This census was conducted under the authority of the Statistics Act, 1966. The confidentiality provisions in this act provide against the release or publication of any particulars relating to individuals.

This is the sixth census undertaken by the Statistics Office, the first being in 1971. Prior to this the Cook Island censuses were conducted by the Registrar General of the Justice Department. Since the annexation of the Cook Islands by New Zealand regular census activities have been held every five years. The census counts all persons present in the Cook Islands on census night, thus it includes visitors temporary in the country. Cook Islanders who are living or are temporarily holidaying abroad are excluded.

The theme of the 1996 Census was "*Counting for our future*". This theme proved appropriate at a time when the country was facing economic crisis and an uncertain future, making it all the more important to understand the current state of the nation.

1.2 SETTING

The self-governing territory of the Cook Islands consists of 15 islands and atolls that are spread over 2million sq. km of the South Pacific Ocean. The Cook Islands is defined as all the islands between 156 - 167 ° West and 8-23 ° South. Such distances over the sea linking small populations presents an imposing hindrance to the development of an efficient transportation and communication system.

The islands are geographically divided into two groups, commonly referred to as the Northern and Southern Group islands. The two groups of islands making up the country portray marked differences in their social, cultural and economic activities. The Northern Group islands remain relatively isolated from the Southern Group islands.

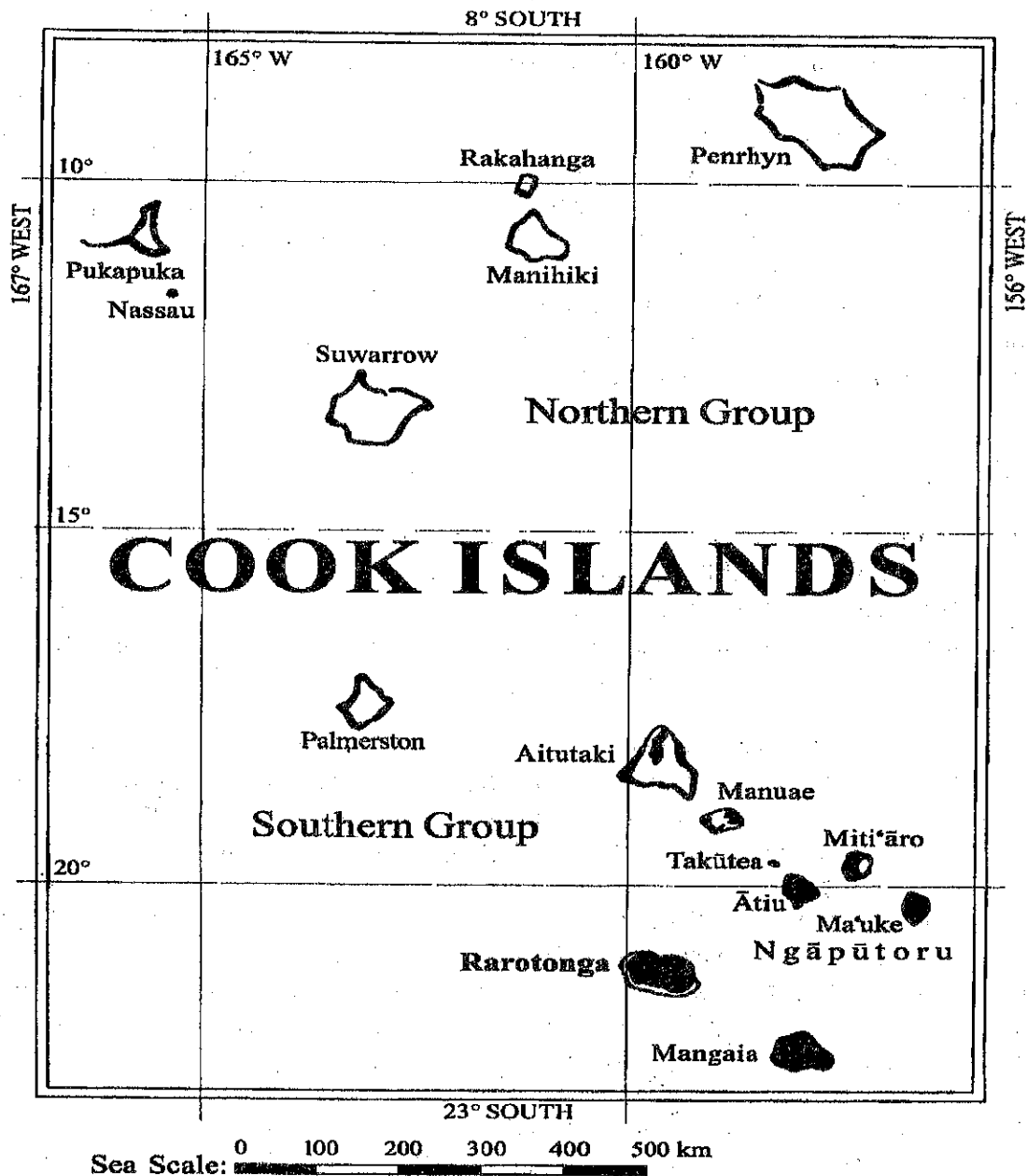
The Cook Islands are the result of volcanic activity and coral growth. The islands of Rarotonga, Mangaia, Atiu, Mauke and Mitiaro are the emergent peaks of extinct volcanoes. The islands of Manuae, Palmerston, Penrhyn, Manihiki, Rakahanga, Pukapuka, Nassau and Suvarrow are atolls, that is coral reefs around a lagoon on the top of submerged volcanoes. Aitutaki is part volcano and part atoll.

The total land area of the Cook Islands is 23,261 hectares while its exclusive economic zone covers an area of nearly 2 million sq. km or 750,000 sq. miles. Rarotonga, with a total land area of 6,719 hectares is the largest and most populous island (over 50% of the population) and also the administrative centre.

The Cook Islands enjoy a South Pacific moderate climate. The mean monthly minimum and maximum temperatures in Rarotonga, the capital, range between 21° and 28° Celsius. Trade winds blow almost continuously.

Rainfall is normally spread evenly throughout the year but there is considerable variation from year to year. The islands lie within the hurricane belt and severe damage to crops, housing and coastal areas (harbours) can be expected once or twice each decade. The hurricane season lasts from November to March during which time storms of less than hurricane strength may also inflict minor damage to the islands.

Figure 1: Map of the Cook Islands



2 CENSUS RESULT

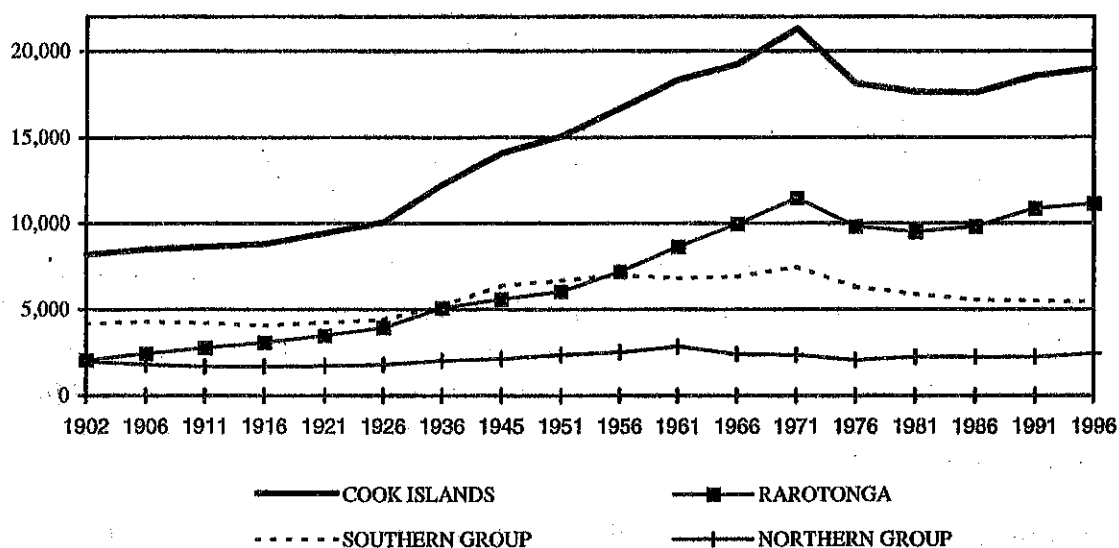
2.1 POPULATION STRUCTURE

2.1.1 Population Trend

The Cook Islands population stood at 19,103 on the 1st December 1996, an increase of 486 (3%) persons compared to the last census in 1991. The 1996 count is the highest since the population peak in 1971 when there were 21,322 persons in the Cook Islands.

The Cook Islands population remained relatively static in the first 25 years of this century, as shown in Figure 2. During this period the population grew by 23%, an average of 1% per annum. For the next 45 years, from 1926 to 1971, the population of the Cook Islands experienced a period of much stronger growth, averaging 2% per annum. After the peak in 1971, the population experienced declines in the next three census periods before returning to growth after 1986.

Figure 2: Cook Islands Population Trend, 1902-1996



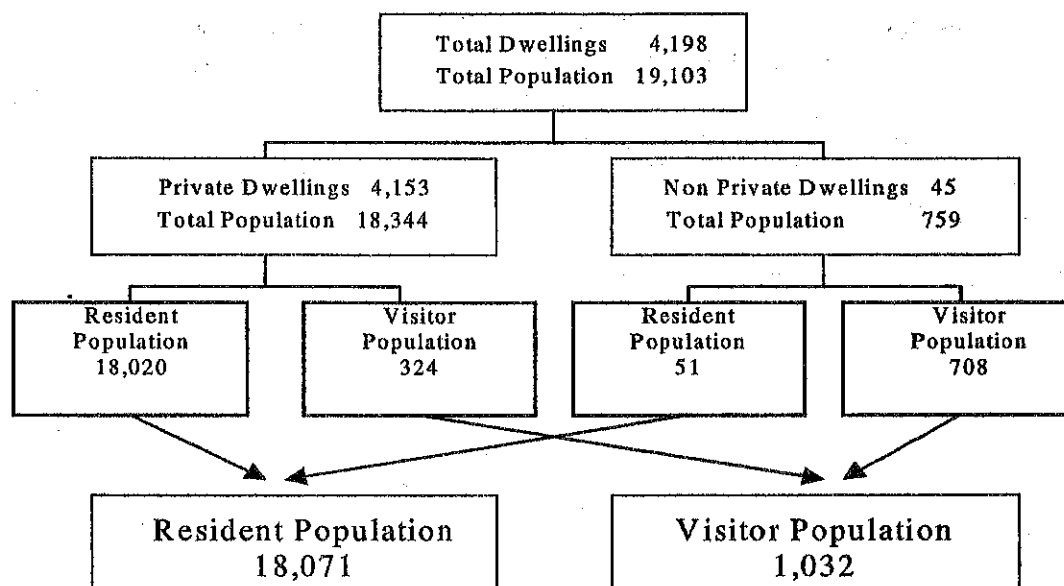
Historically, it was not until the 1950's that Rarotonga became the most populated region in the Cook Islands. Since 1926 the population of Rarotonga has been increasing at twice the rate of the Cook Islands total. The Northern Group islands population has remained relatively unchanged since 1902, fluctuating around 2,000 people. For the first half of this

century more people resided in the Southern Group islands¹. The population of this group peaked in 1971 and has been declining since.

2.1.2 Population Composition

Figure 3 below illustrates the breakdown of population between residents and visitors, and the breakdown of dwellings between private and non-private. On Census night in the Cook Islands, there were 19,103 persons enumerated of which 9,842 (52%) were males and 9,261 (48%) were females.

Figure 3: Population Breakdown.



The resident population of the Cook Islands was 18,071 on census night, an increase of 553 persons over the 1991 Census count. This represents resident Cook Islands Maori, migrants who have been granted permanent residency, and others who have been in the country or intend residing here, for a period of more than one year. The resident population consisted of 9,332 (52%) males and 8,739 (48%) females. Visitors or persons who do not usually reside in the Cook Islands totalled 1,032.

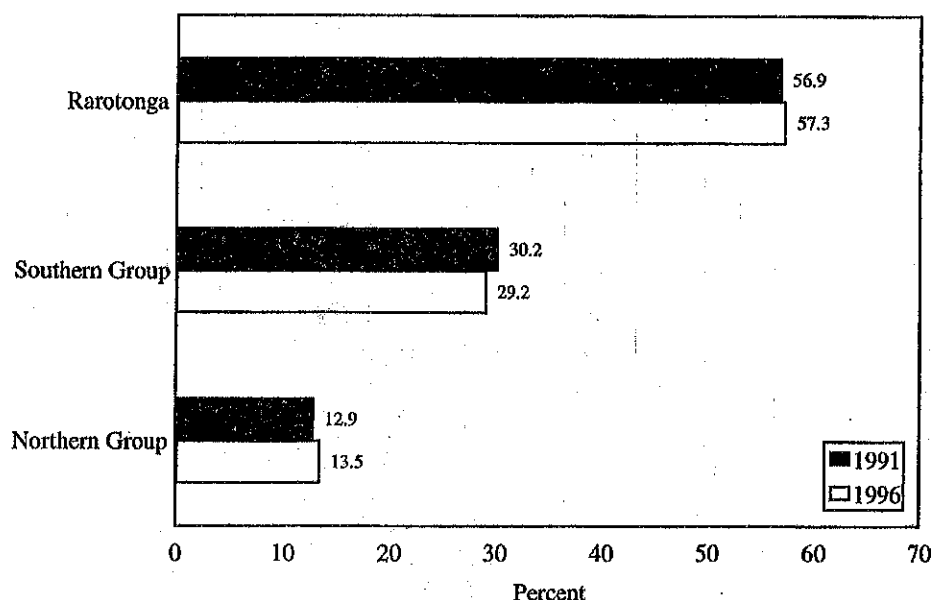
For the purposes of this report, resident population is now referred to 18,034. 37 prison inmates have been excluded from the demographic, social and economic analysis.

2.1.3 Population Distribution

Rarotonga remains the most populous island of the Cook Islands with 57% of the resident population, 29% of the population resides in the Southern Group islands, and the remaining 14% reside in the Northern Group islands. There has been relatively little change since the 1991 census as seen in Figure 4 below.

¹ For the purpose of this report, Southern Group islands excludes Rarotonga.

Figure 4: Resident Population Distribution 1991-1996



On a regional basis, the Northern Group population increased by 191 (8%) persons and Rarotonga's resident population by 370 (4%) persons between 1991 and 1996. On the other hand, the Southern Group islands experienced a decline in the resident population of 36 (1%) persons during this period.

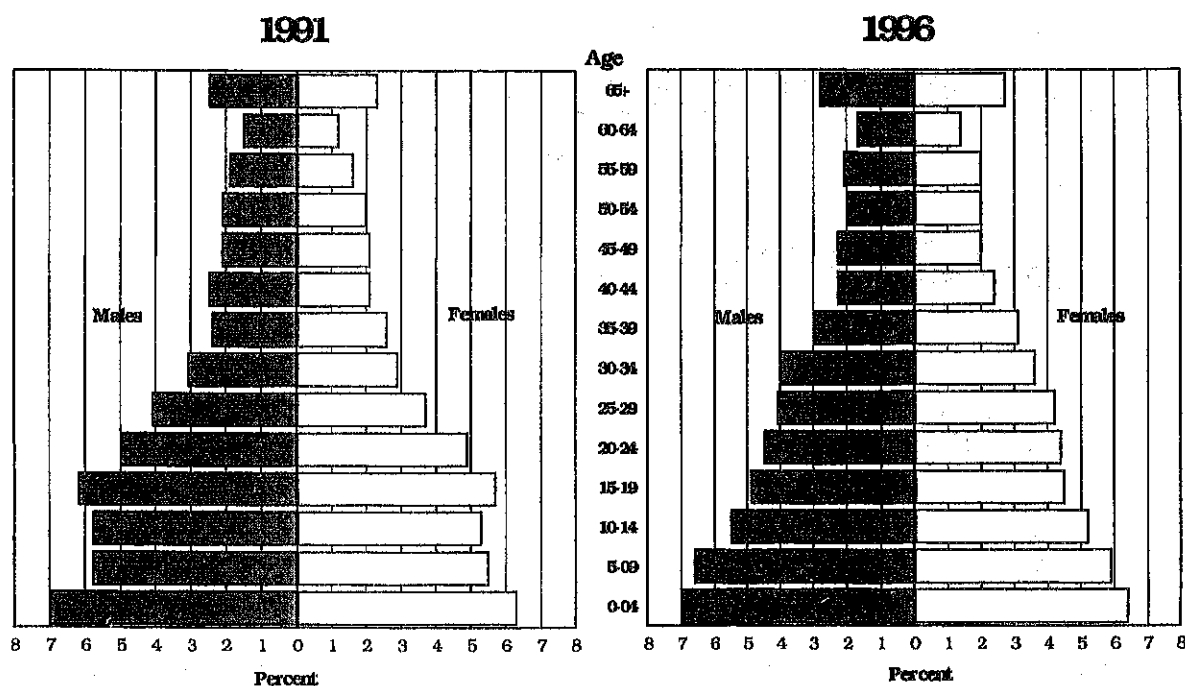
The islands of Mitiaro, Aitutaki, Mauke, Pukapuka, Penrhyn, and Manihiki all experienced population increases between 1991 and 1996. The population of Palmerston remained unchanged during the period while all other islands experienced declines. The islands of Pukapuka, Penrhyn and Mitiaro experienced the largest population increases of 108 (16%), 103 (21%) and 74 (30%) persons respectively. Offsetting these were significant decreases in the population of Mangaia and Atiu, 93 (8%) and 58 (6%) persons respectively between 1991 and 1996.

2.1.4 Population by Age and Sex

There were 9,297 male and 8,737 female residents in the Cook Island's on census night. This is an increase of 204 males and 312 females over the 1991 census count. Males have always made up a larger share of the Cook Islands population however the gap narrowed from 668 more males in 1991 to 560 more males in 1996.

All age group categories except for the 10-14, 15-19, 20-24 and 75-79 showed increases in population of between 1991 and 1996. Of the categories that declined, the 15-19 and 20-24 year old age groups experienced the greater drop in population with 443 (21%) and 161 (9%) persons respectively. Figure 5 shows a comparison of the age-sex structure of the 1991 and 1996 populations in the form of Population Pyramids.

Figure 5: Population Pyramids 1991 and 1996



2.1.5 Dependency Ratio

The age dependency ratio is often used as an indicator of the economic burden that the productive sector of the population must carry. The dependency ratio measures the proportion of the population outside of the working age group (0-14 + 60 and over) compared to the working age group (15-59). It should be noted that the higher the dependency ratio the heavier or greater the burden. Since 1966 the ratio has been declining, from a high 123% in 1966 to 75.4% in 1991. The ratio increased to 79.0% in 1996 (refer table below). There is a significant difference between the dependency ratios on Rarotonga, where the majority of job opportunities are and the other islands.

Table 1: Dependency ratio by Islands 1991 and 1996

Region/Islands	1991	1996
COOK ISLANDS	75.4	79.0
RAROTONGA	60.6	68.0
SOUTHERN GROUP	99.4	94.7
Aitutaki	97.9	93.7
Mangaia	100.3	100.6
Atiu	98.8	89.9
Mauke	106.6	94.8
Mitiaro	93.7	96.3
NORTHERN GROUP	99.7	100.1
Palmerston	113.0	122.7
Pukapuka	122.6	108.0
Nassau	88.9	125.0
Manihiki	79.9	90.7
Rakahanga	87.8	80.4
Penrhyn	112.3	105.0

2.1.6 Fertility

This is the second census in which the Statistics Office has reported on the Cook Islands population fertility pattern. A mother referred to in this report is a female 15 years and over who has given birth to a child. There were 4,086 mothers recorded on Census night in the Cook Islands and of these mothers, 793 (19%) had given birth to only one child, 751 (18%) had 2 children, 632 (16%) had 3 children, 523 (13%) had 4 children and 1,387 (34%) mothers had given birth to 5 or more children. 274 (7%) of mothers in the Cook Islands have given birth to 10 or more children.

The youngest reported age of a mother at birth of her first child was 11 years old with the oldest being 39 years. The most common mothers' age at birth of first child was 19 years old with 554 mothers reported in this category.

2.1.7 Migration

Of the 18,034 resident population in the Cook Islands during the 1996 Census, 16,624 had not changed their island of usual residence over the previous year (one year ago), while 1,489 stated they had not been born or were not resident in the Cook Islands five years ago. (Refer table 2 below).

Table 2: *Resident Population and Usual Place of Residence*

Usual Place of Residence	On Census night	One Year Ago	Five Years Ago
COOK ISLANDS	18,034	17,514	15,666
Rarotonga	10,337	9,652	7,659
Southern Group	5,258	5,125	4,564
Northern Group	2,439	2,340	1,954
New Zealand	-	277	1,136
Other Countries	-	120	353

2.1.8 Place of Birth

7,073 (39%) persons in the Cook Islands reported to have been born on Rarotonga, 5,546 (31%) were born on the Southern islands and 1,623 (9%) born in the Northern Group. The remaining 2,778 (15%) persons were born outside of the Cook Islands of which 2,095 were born in New Zealand.

2.2 SOCIAL CHARACTERISTICS

2.2.1 Ethnicity

Cook Islands Maori make up the bulk of the resident population with 16,284 (90%) persons, 920 (5%) persons were Part Cook Island Maori, and 830 (5%) persons were of foreign decent. As expected, with the commercial centre on Rarotonga, most of the non-Cook Island Maori residents are located on this island. Since 1991 the number of non-Cook Island Maori has declined by 168 persons or by 17%.

Table 3: Resident Population by Ethnic Origin

	<u>Cook Island Maori</u>		<u>Part Cook Island Maori</u>		<u>Other Ethnic Origin</u>	
	1991	1996	1991	1996	1991	1996
COOK ISLANDS	15,688	16,284	832	920	998	830
Rarotonga	8,493	8,848	596	754	878	735
Southern Group	5,057	5,070	142	111	95	77
Northern Group	2138	2,366	94	55	25	18

Of the 830 Non-Cook Island Maori residents 121 were temporary contract workers, 138 were dependents of temporary contract workers and 571 were permanent residents. In comparison to the 1991 Census, the number of contract workers and their dependents has declined by 43%.

2.2.2 Religion

The question on religion was not compulsory but nevertheless only 350 persons (2%) of the resident population refused to answer this question.

The distribution of the population by religious affiliation has undergone some changes since 1991. The Cook Islands Christian Church (CICC) is the dominant denomination with 10,498 (58%) members, although down by 4% as recorded in the 1991 count. The next most populous group is the Roman Catholic Church with 3,076 members followed by the Seventh Day Adventist Church with 1,365 members.

2.2.3 Marital Status

Of the 11,567 resident population aged 15 years and over, 5,326 (46%) were married at the time of the 1996 Census. A further 5,255 (45%) had never been married while 561 were widowed and the remaining 425 were either divorced or separated from their legal partner.

2.2.4 Educational Characteristics

Education in the Cook Islands is free and compulsory up to the age of 15 years. This has ensured access to primary (grades 1-6) and secondary (forms 1-7) level of education for all. With the assumption that all persons below the age of 15 would be at school, the question on education was asked only to those over 15 years of age.

Out of 11,567 persons aged 15 years and over, 114 (1%) persons stated they had not received any schooling. A further 1,157 (10%) had not progressed passed primary school education. 7,199 (62%) persons indicated they had no qualifications, although this does include a number of students' 15 years and over who are still at school and have yet to attain qualifications. Of those who reached tertiary education only 34% were female.

A total of 1,652 (14%) of the resident population aged 15 years and over indicated having received trade, vocational, or professional qualifications. The number of persons who have achieved university qualifications (including through extension studies) was 269 (2%). As

of Census night, 214 residents had attained at least Stage I tertiary level qualifications. 156 residents had obtained bachelors degrees, 16 had progressed to masters' degrees, and 7 had doctorates.

Qualifications by Age Group reflect the lack of educational opportunities in the past. The older age groups are more likely to have trade certificates, diplomas etc. With the availability of external studies through the University of the South Pacific and also overseas scholarships in recent years, more and more people are turning out with higher qualifications.

2.3 ECONOMIC CHARACTERISTICS

2.3.1 Activity Status

Of the 11,567 resident population 15 years and over, 5,230 (45%) were employed while 3,863 (33%) were engaged full time in Home Duties. 770 persons reported to be full-time students, 822 were retired and a further 118 were disabled. In comparison to the 1991 census, there was a significant decrease in full-time workers, from 5,194 (46%) in 1991 to 3,752 (32%) in 1996. Those reporting to be engaged in full time Home Duties increased from 22% in 1991 to 33% in 1996.

2.3.2 Labour Force

The total labour force (economically active population) stood at 5,994 in 1996, a 10% decline over 1991. Of this total 5,230 (87%) were in employment, and 764 (13%) were unemployed but actively seeking work (refer Table 4 below). The total employed population declined by 15% between 1991 and 1996. Rarotonga experienced a 10% decline in employment, the Northern Group a 7% decline, and the Southern Group a 36% decline in numbers employed.

Table 4: *Economically Active Population by Region*

	Total Economically Active		Employed		Unemployed		Unemployed %	
	1991	1996	1991	1996	1991	1996	1991	1996
COOK ISLANDS	6,658	5,994	6,143	5,230	515	764	7.7	12.7
Rarotonga	4,739	4,404	4,463	4,021	276	383	5.8	8.7
Southern Group	1,392	1,024	1,238	797	154	227	11.1	22.2
Northern Group	527	566	442	412	85	154	16.1	27.2

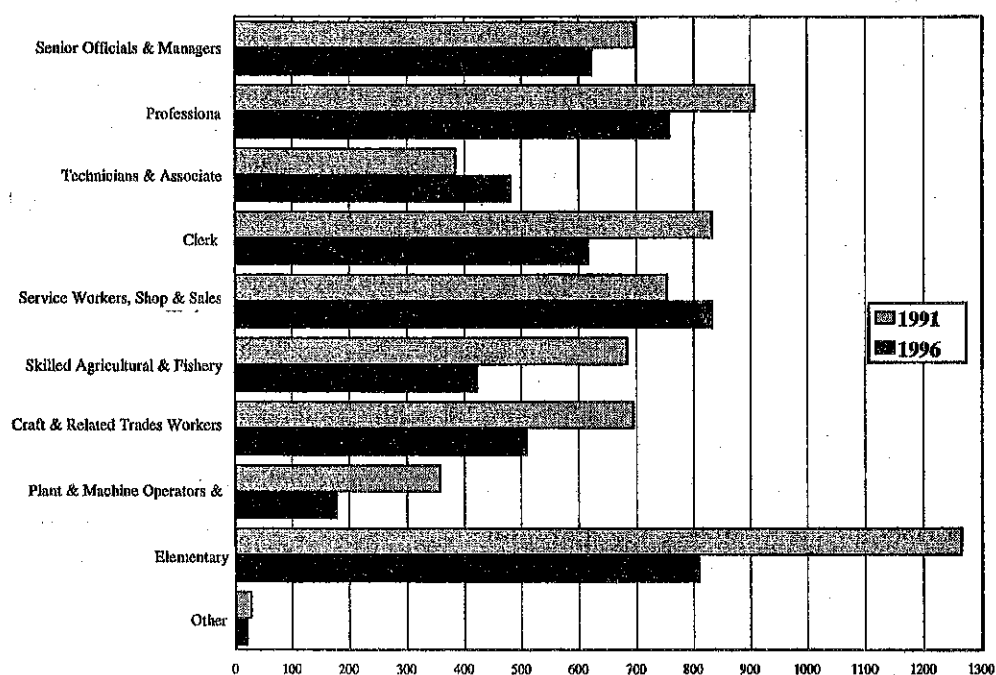
Of those employed, 3,072 (59%) were male and 2,158 (41%) were female. The unemployed consisted of 594 (78%) males and 170 (22%) females. Of those unemployed 485 (82%) persons had been previously employed. There is a significant difference in the percentage of unemployed persons between Rarotonga and the two island groups reflecting the greater opportunities for formal employment on Rarotonga. The high rate of

unemployed persons is to some degree a reflection of the governments economic reform programme which begun in 1996.

2.3.3 Occupation

The occupation distribution of the employed population revealed a very even split of the workforce across the occupation categories. service, shop & sales workers, 841 (16%) elementary occupations, 814 (14%) professionals, 603 (12%) senior officials & managers, 616 (12%) clerks, 510 (10%) craft & related trades workers, 481 (9%) technicians & associate professionals, 401 (8%) skilled agricultural & fishery workers, 185 (4%) plant & machine operators & assemblers.

Figure 6: Occupational Classification of Employed Population 1991-1996



Of the nine occupation categories technicians and associate professionals and service, shop and sales workers experienced increases in employment numbers between 1991 and 1996. The elementary category, which includes laborers, unskilled agriculture and fisheries workers, cleaners, and caretakers declined by 473 (37%) during the period.

The majority of employed persons work in the private sector, as shown in table 6 below. In 1996 the private sector accounted for 57% of the workforce while 31% are in the public sector. Ad-hoc organisation, religious organisations, etc employ the remaining 12%.

Since the last Census there has been a significant shift from the public sector to the private sector. Government employment has dropped from 44% of the labour force in 1991 to 31% in 1996 directly as a result of the economic reform program instituted by the Government in early 1996. The main administrative functions of government are based on Rarotonga and the decline on this island in public servants was 39% compared to declines of 60% and 18% in the Southern and Northern Groups respectively.

Table 5: Sector of Employment by Region 1991 & 1996

	1991			1996		
	Private	Public	Other	Private	Public	Other
COOK ISLANDS	2,662	2,885	1051	2,992	1,559	679
Rarotonga	2,310	1,728	574	2,530	1,024	467
Southern Group	265	887	265	340	341	116
Northern Group	87	270	212	122	194	96

Of the nine principal industry classifications, 1,855 (35%) of the workers were engaged in community, social and personal services, and a further 1,468 (28%) were employed in the trade, restaurants & accommodation industry. Of this total, 33% were directly employed in the accommodation industry. The agriculture and fishing industry only accounts for 11% of the employment numbers.

In 1996 there were 456 persons who had secondary employment with 75% of these on Rarotonga. By definition, secondary employment encompasses those who already hold a principal job on a full or part-time basis, and students. Of those holding a secondary occupation over 65% were male. The majority of people with secondary employment worked in the agricultural and fishing, and trade, restaurants & accommodation industries.

2.3.4 Home Duties by Gender

Of the 5,924 resident males' 15 years and over, 64% spend time raising livestock, 59% were engaged in subsistence fishing, and a further 55% spent time tending the garden. 51% of males reported spending time assisting with the housework but only 24% assisted with looking after children. Of the 5,643 resident females' 15 years and over, 94% performed housework, 23% tendered livestock, and 16% were engaged in subsistence fishing. Of the 2,037 persons involved in handicraft making 1,656 (81%) were female. .

2.3.5 Income

This was the first census that a question on income has been asked. This question was asked of all person's 15 years and over on all incomes received per annum including welfare benefits. Of the 11,567 persons 15 years and over, 2,997 (26%) reported to not be receiving any income, of which 1,755 (59%) were males and 1,242 (41%) females.

The employed population stands at 5,230 persons. Table 6 below breaks down this population in terms of income. 1,425 (27%) of persons reported earning less than \$5,000 per annum, 2,532 (48%) earn between \$5,000 and \$14,999, 944 (18%) earn \$15,000 to \$29,000 and 329 (6%) earn more than \$30,000. 112 persons of the latter group earn over \$50,000 per annum.

As expected, with the commercial centre located on Rarotonga there is a higher proportion of the higher income groups living in Rarotonga. Of the 112 persons earning more than \$50,000 per annum, 102 were located on Rarotonga and of the total only 17 were female.

Table 6: Income Distribution by Region

	Income Groups				
	No Income	Less Than \$5,000	\$5,000 - \$14,999	\$15,000 - \$29,999	\$30,000 & Over
COOK ISLANDS	112	1,313	2,532	944	329
Rarotonga	47	922	1,920	823	309
Southern Group	47	254	400	85	11
Northern Group	18	137	212	36	9

2.3.6 Welfare Benefits

The types of welfare benefits in the Cook Islands are child, old age, destitute/infirm, superannuation, and war pension. Recipients of social welfare benefits may not necessarily be claiming only one type of benefit. For example, a mother claiming two child benefits would only be counted once and maybe again for other types of welfare benefits. There were 1,391 persons on Census night to be collecting Old Age Pension, 2,478 receiving Child Benefits, 312 collecting Superannuation and 7 claiming war pensions.

2.3.7 Land Rights and Land Tenure

The two main categories of land in the Cook Islands are "customary" and "freehold". Cook Islanders under the Maori custom and usage hold customary land. Freehold land is investigated land to which titles have been ascertained and the land vested in the person named. It is incorrect to assume that a person to whom land is allocated has absolute right to the use and disposal of it. Rights acquired are subject to the rights held by others that claim title to the land. Alienating of customary land is prohibited. Three islands in the Cook Islands have no land court, Mangaia, Mitiaro, and Pukapuka, and customary law determines land rights.

Persons currently possessing legal succession to land totalled 4,192 on census night and a further 214 claim to have other rights such as leased land. Of the types of legal land tenure, sole occupation rights 1,733 (41%) are predominant. There were 688 (16%) joint occupation rights reported in the census, 483 (12%) leaseholds/sub-leaseholds, all of which were on Rarotonga. Data when disaggregated by gender reveals that women are not denied the right to land.

From the data on Land Rights and Tenure, 8,602 (74%) persons in the Cook Islands aged 15 years and over have rights to land or are eligible to succeed to land in the future, while the remaining 2,965 (26%) have no rights and will not succeed to land.

2.4 HOUSEHOLD CHARACTERISTICS

A total of 4,198 dwellings were occupied on Census night, of which 4,153 were private and 45 were non-private. This compares with 3,677 private and 39 non-private dwellings in 1991. Non private dwellings were mostly accommodation for short-term visitors in the

Cook Islands. Institutions such as hospitals, hostels and prisons were also classified as non-private dwellings.

2.4.1 Household Size

The number of private occupied dwellings in the Cook Islands increased by 13% between 1991 and 1996. Rarotonga experienced the largest increase with 16% while the Southern and Northern group islands rose by 9% during the period.

Average household size declined from 4.9 persons per household in the 1991 census to 4.4 persons per household in the 1996 census (refer Table 7 below). The assumption is that Cook Islanders are moving away from living in extended households, towards a nuclear type family. Rarotonga has the smallest household size with 4.1 persons per household, down from 4.6 in 1991. The household size in the Southern group also showed a significant change, falling to an average of 4.7 persons per household. The household size in the Northern Group remained unchanged between the two censuses.

Table 7: Number of Private Dwellings: 1991 and 1996

	1991 Census			1996 Census		
	Total Dwellings	Total Persons	Average Hhld Size	Total Dwellings	Total Persons	Average Hhld Size
COOK ISLANDS	3,677	17,869	4.9	4,153	18,344	4.4
Rarotonga	2,222	10,208	4.6	2,569	10,558	4.1
Southern Group	1,035	5,402	5.2	1,127	5,332	4.7
Northern Group	420	2,259	5.4	457	2,454	5.4

Pukapuka has the largest average household size with 6.5 persons in 1996 an increase from 6.0 persons in 1991. Other islands that experienced increases in household sizes were Mitiaro and Penrhyn.

2.4.2 Household Composition

Of the 4,153 private dwellings, there were 492 one-person households, 657 two-person, 638 three-person and 637 four-person household. In 1996 there were 217 households with 10 or more occupants. Of the one-person households 67% were located on Rarotonga while of the larger households, 10 persons or more, 47% were in Rarotonga.

Male-headed households remain dominant in the Cook Islands with 3,183 households reporting to be headed by males and 937 by females. Male dominance has declined with 81% in 1991 compared to 77% in 1996.

2.5 HOUSING/DWELLING CHARACTERISTICS

2.5.1 Year of Construction

Since the 1960's there has been a significant increase in the average number of private dwellings constructed each year. The average number of dwellings constructed in each year rose from 35 in the 1950s to over 100 in the 1960s. The 1970's and 1980's saw a drop but the average remained at over 80 houses per annum. The 1990's has seen another burst in house construction, averaging 115 per year, although this did drop off to only 89 new dwellings in 1996.

2.5.2 Dwelling Tenure

Of the 4,153 private dwellings in the Cook Islands, 2,757 (66%) were owned outright (refer Table 8 below), an 11% increase over the 1991 census. As expected, a higher majority of houses on the outer islands are owned outright compared to those on Rarotonga. People on Rarotonga have greater access to financing opportunities.

Table 8: Total Private Dwellings in 1996

	Total Dwellings	Owned Outright	Percentage
COOK ISLANDS	4,153	2,757	66
Rarotonga	2,569	1,439	56
Southern Group	1,127	913	81
Northern Group	457	405	89

In 1996, 690 dwellings were being occupied either free of charge or were provided with employment, compared with 537 dwellings in 1991. Only 250 dwellings have direct loan or mortgage repayment commitments, a decline over the 273 recorded in 1991 (note: excludes dwellings that are rented where landlords have loan commitments). 231 (92%) of dwellings with mortgage commitments are located on Rarotonga.

Rented dwellings totalled 456, an increase of 17% over 1991. Of these rented dwellings, 429 (94%) were located on Rarotonga. Of the total rented dwellings, 246 (54%) were rented for less than \$100 per week. 185 of the rented dwellings were fully furnished, 190 were partly furnished, and the remaining 81 were rented without furnishing.

2.5.3 Housing/Dwelling Structure and Number of Rooms

In December 1996, 49% of the private dwellings were constructed of concrete blocks, while only 6% were constructed of traditional materials (including lime and sticks, koro and kaiara). Of those constructed of traditional materials only 28% are located on Rarotonga. Over 90% of private dwellings have iron roofing while only 3% have kikau roofs. Concrete flooring predominates in the Cook Islands, being found in 88% of dwellings.

2.5.4 Source and Supply of Water

A total of 3,541 (85%) privately occupied dwellings use the public water main as their source of water supply. 804 (19%) of dwellings reported to have own rainwater tank, an increase of 272 (51%) over the 1991 census. The majority of these are on the outer islands with only 5% of private dwellings on Rarotonga reported having rainwater tanks in 1996. 2,897 (70%) of the privately occupied dwellings reported having water piped to inside their dwelling, while another 1,161(28%) had water piped to outside their dwelling.

Access to public water mains has increased significantly in the Southern Group islands, with 1,060 dwellings having access in 1996 compared to 612 dwellings in 1991. There is no public water main system in the Northern Group islands and households depend on either public or private rainwater tanks.

2.5.5 Household Appliances and Amenities

The 1996 census revealed that 67% of private occupied dwellings use a gas stove as their principal means of cooking, a slight increase over the 64% in 1991. A further 24% of dwellings use kerosene burners or wood crates, down from 29% in 1991. The assumption is that most households are moving away from the traditional means of cooking, with the shift being most notable on Rarotonga. On this island 97% of households use electricity or gas as their principal means of cooking.

Since electricity has become available throughout the Cook Islands the use of electrical appliances for cooking, household entertainment and personal care has increased. Of the total private occupied dwellings, 92% had electricity connected (refer Table 9 below).

Table 9: *Percentage of Households with Access to Amenities*

	Electricity	Telephone	Bath/Shower	Flush Toilet
COOK ISLANDS	92%	73%	82%	71%
Rarotonga	97%	80%	94%	92%
Southern Group	93%	65%	66%	41%
Northern Group	63%	53%	52%	23%

73% of dwellings had a telephone in 1996, a significant increase on the 53% with telephones in 1991. With regards to the type of amenities reported 82% of dwellings had a shower or bath in 1996 and 71% had a flush toilet, compared to 83% and 63% respectively in 1991. 570 dwellings still use a pit toilet, with 530 of those dwellings in the Southern Group islands. 118 (26%) dwellings in the Northern Group islands still use a lagoon toilet, a decline from 150 dwellings in 1991.

The number of fridge's, freezers, and other household appliances such as microwaves, frying pans, etc have increased since 1991. In 1996 2,710 (52%) dwellings had a refrigerator, up by 634 (31%) on the 1991 census. 60% of households had washing machines, which is also a significant increase (43%) over the 1991 result. Ownership of sewing machines almost doubled between the census periods, rising from 979 in 1991 to

1,754 in 1996. On the entertainment front in 1996, 67% of households had a TV, 62% had a video player, and 9% of households had a personal computer.

2.5.6 Agricultural Activity

A large number of Cook Islands households, 2,723 (66%), were engaged in subsistence agriculture in 1996. A further 213 (5%) households were engaged in commercial agriculture and the remaining 1,217 (29%) households reported to not undertake any type of agriculture activity in 1996. On Rarotonga 40% of households did not engage in any agriculture activity.

The 1996 census revealed 222 households owned a tractor, 309 owned a rotary hoe, and 2,134 households had knapsack sprayers. The lack of households owning agriculture machinery on the Northern Group islands has changed little since the 1991 census.

There were significant decreases in the count of livestock (including pets) when compared with the 1991 Census. The number of goats declined by 2,049 (36%), ducks by 294 (68%), and horses by 83 (35%). The average number of pigs per household was 4.7 in 1996, down from 6.0 in 1991. Cats outnumbered dogs in the 1996 census by 73 animals. Cattle, horses and dogs are non-existent in the Northern Group Islands. Aitutaki continues to report no dogs on the island.

2.5.7 Fishing Activity

A total of 2,923 dwellings are engaged in some form of fishing activity (ranging from collecting shellfish to deep-sea fishing). Of these 1,737 fished both inside and outside the reef. Only 105 households fished exclusively outside the reef. Subsistence fishing is practised extensively throughout the Cook Islands with 2,764 (67%) of all households engaged in this activity in 1996. A further 159 (4%) of households fished commercially (includes pearl farming) in 1996. In the Northern Group islands 96% of households participate in some form of fishing.

The ownership of fishing equipment in itself does not imply fishing activity since a dwelling may not be engaged in fishing but may own some form of equipment. 1,803 (43%) of private occupied dwellings reported to own fishing rods with the total number of fishing rods in the Cook Islands being 5,208. 1,126 (27%) owned fishing nets, and 1,109 (27%) owned spear guns. In 1996 there were 663 fishing boats and 628 fishing canoes. Only 26% of these were located on Rarotonga.

2.5.8 Transport Equipment

Of the 4,153 private occupied dwellings 2,535 (61%) reported to own motor cycles, 1,277 (31%) bicycles, and 1,042 (25%) motor cars. Most of the vehicles were found in the Southern Group islands and Rarotonga. The types of vehicles reported from the Northern Group were mainly motorcycles and bicycles. There were 3,519 motor cycles on census night, 2,048 bicycles, and 1,133 were cars.

The number of motor cars increased by 24% between 1991 and 1996. Motor cycles increased by 17%, trucks by 13%, while the numbers of vans, utility vehicles and mini buses declined by 4%, 10%, and 11% respectively.

3 CENSUS METHODOLOGY

3.1 SCOPE AND COVERAGE

The scope of the early Cook Islands censuses was limited, in fact they consisted of head counts only. With the passage of time the census has expanded. Gradually, questions on sex, age, marital status, religion, education, employment, etc have been included. Questions on unpaid work and income earned were included for the first time in the 1996 Census.

A personal questionnaire is completed for every man, woman and child alive at midnight on census night within the geographical boundaries of the Cook Islands. The Census excludes those persons on foreign vessels, yachts and aircraft flying through or stopping temporarily (transit). A dwelling questionnaire is completed for every occupied dwelling as at midnight on census night.

3.2 CENSUS QUESTIONNAIRE

The questionnaires for the 1996 Census of Population and Dwellings was similar to that of the 1991 Census.

The dwelling questionnaire contained 21 questions, requesting information on the number of persons in the dwelling, type of dwelling, year dwelling was constructed, appliances and amenities, subsistence agricultural and fishing activities, etc.

The personal questionnaire was split into two parts:

Part A: Questions 1 to 10

- Questions 1 to 6 are completed by or for every person in the Cook Islands on census night.
- Questions 7 to 10 are completed by or for every person in the Cook Islands on census night excluding those who do not normally reside in the Cook Islands (visitors).

Part B: Questions 11 to 21

- Questions 11 to 21 are completed by or for every person 15 years or over before the 1st of December 1996.

3.3 FIELD WORK

The Cook Islands are geographically divided into a number of Census Districts coinciding with the electoral boundaries, and these were further divided into enumeration areas. An enumerator is then assigned to collect the census forms for each enumeration area.

The three phases to the census fieldwork are outlined below:

- **Update of Household listing and Maps**

The enumerator is responsible for the updating of field maps and household listings. The main purpose of this phase was to check and update the pre-listed information for every household in the enumerators' area. During this tour, the enumerators are familiarised with the location of each dwelling and an estimate of the number of people in each household is made. The update was carried out on Thursday 21 November and Friday 22 November 1996.

- **Pre-Census Enumeration**

During this stage of the census, the enumerator visited each dwelling in the enumeration area and completed the household's dwelling questionnaire and personal questionnaire(s) upon consent from the head of household or any other responsible adult. This was carried out in the week of Monday 25th November to Friday 29th November 1996.

- **Post Census night Enumeration**

Since the morning after census was Sunday, a statutory holiday, no census activity took place. The post census night enumeration was carried out on Monday 2nd December and Tuesday 3rd December 1996. The enumerator visited the households in his/her enumeration area to check on any additional person's e.g., babies born during the census night, that were not counted in the original visit. They also noted anyone who passed away prior to the census night.

3.4 DATA PROCESSING

The processing of the 1996 Census Data consisted of two procedures:

- **Manual Processing**

Manual data processing included editing and coding of the questionnaire. Upon receipt of the completed census questionnaire, initial checks were made for completeness and general acceptability of the answers. Maps were also updated in the computer system. Office editing of the completed questionnaires was done using the enumerator's field book to check the completeness, accuracy and consistency of the data. Inconsistencies, omissions, or doubtful entries in the questionnaires, which could not be corrected in the office, were referred back to the census supervisors for verification and /or correction.

A coding scheme was formulated, assigning numeric codes to as many questionnaire variables as possible in order to make data entry easier and quicker. A significant number of questions were pre-coded to help reduce office-coding time.

- **Electronic Processing**

The availability of a network computer system has added a new dimension to data processing for the office. With new database software (Microsoft Access) also being introduced, we were able to complete the data processing on time. Four temporary data

entry personnel were employed to assist with the data processing while other statistical activities of the office continued.

The data was entered on an enumeration area (batch) basis. Two tables were set up to capture the information, one for the household details and the other for the personal details. The computer system carried out range checks and logical checks during the data entry stage to minimise punching errors and detect obvious inconsistencies in the data. The system was also used to detect unreasonable relationships between one variable and another.

3.5 TABULATION

A similar tabulation plan as used for the 1991 census was followed for the 1996 census. Lists of priority tables were first tabulated, such as the population distribution for all islands and the number of private occupied dwellings and non-private dwellings. These priority tables were released as part of the preliminary Census Report in late December 1996.

A full set of tables for the Cook Islands was produced and a selection of these tables was used for the production of this report.

3.6 CONCEPTS AND DEFINITIONS

A full list of definitions and terms used for the Census of Population and Dwellings 1996 is contained in the instruction manual, but the following should be emphasised.

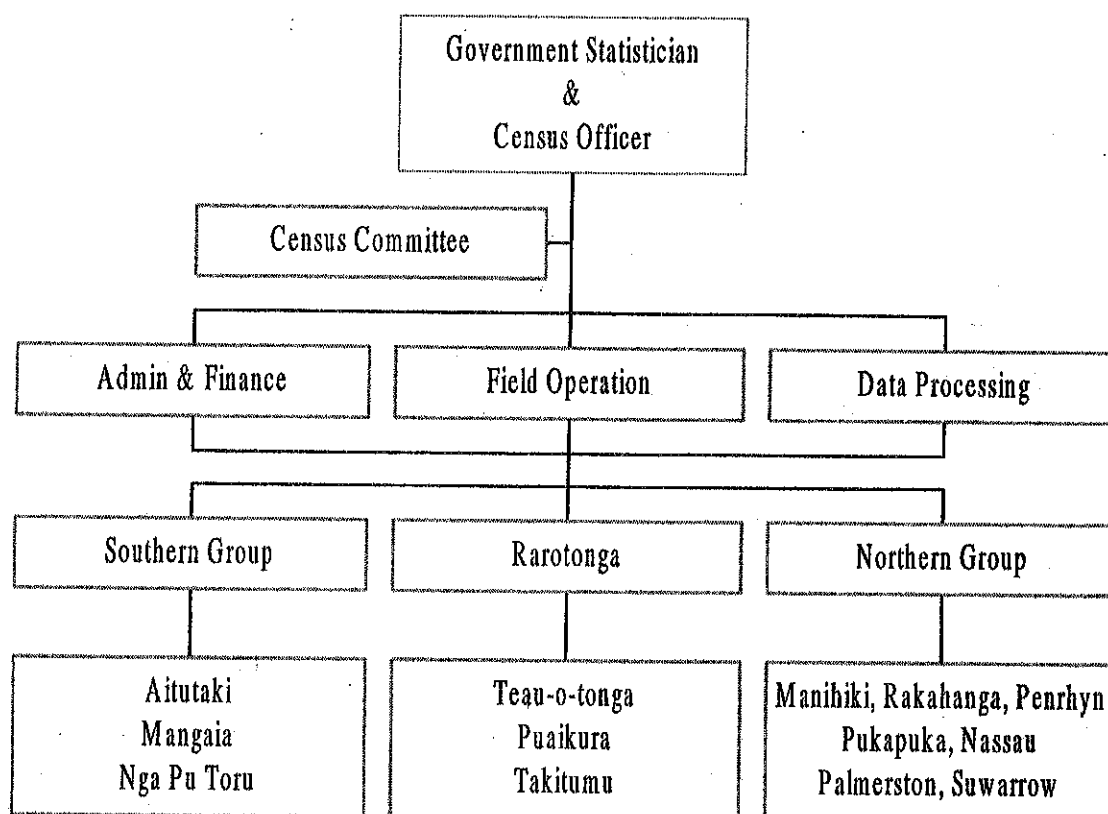
- Census night is the night between the 30th November and the 1st December 1996. The census time-point is midnight of that night.
- Dwelling is a building or group of buildings or part of a building occupied by at least one household on census night.
- Household is a group of persons, related or unrelated, living together under the same kitchen or contributing to a common budget. One member of the group is regarded as the head. The term family is synonymous in this respect. (Note: a household can consist of one person)

4 CENSUS ADMINISTRATION

4.1 ORGANISATION AND CONTROL

The overall organisation and control of the census, by virtue of Section 20 of the Statistics Act 1966, is vested upon the Government Statistician who, for the purpose of the census will be referred to as the Census Officer. A number of sections of the Act apply in carrying out the census. These include the "confidentiality" clause, which provides against the release or publication of any individual particulars and the offences and penalty clauses, which may be invoked against any persons failing to abide by the provisions of the Act.

Figure 8: Census Organisation Chart



4.2 CENSUS BUDGET

Despite the economic crisis and ensuing economic restructuring, cabinet supported the conducting of the census in December 1996. It was seen as important not to break the 5-year cycle of census taking. An appropriation of \$112,000 was allocated in the F96/97 budget. The census is quite different from the usual activities of the Government that are carried out year after year. The activity of the census is spread over the period of five years and the budget should reflect the complete plan of action. The bulk of the budget was taken to cover costs of remuneration of field workers and transport and communications during December 1996.

4.3 TECHNICAL COMMITTEE

The census benefited most by drawing upon the expertise of those from within the Statistics Office and from both the public and private sector. Memorandums were sent to potential users asking for contributions to the census. This method was considered more useful than conducting users' meetings whereby the turnout in the past has not always been good. Other technical input to the census was from NZODA Consultant Rob Solomon.

4.4 PUBLICITY AND THE MEDIA

Publicity was regarded as an important component of the census project. The Statistics Office needed to create public awareness of the importance of the census and also the importance of obtaining complete responses, at the same time dealing with confidential information. During the early stages of planning T-shirts (with a census logo) were printed as part of the awareness process of the census.

The Census was widely publicised using:

- Television - Advertising outlining the objectives and scope of the census, and at the same time requesting the co-operation of the community.
- Local newspaper - Full coverage of the census operation, including inserting the pamphlets in the weekend circulation.
- Radio - Important aspects of the census were announced throughout the month of November up to the Census night. English and Maori language was used.
- Pamphlets - Pamphlets were distributed to all Government ministries, schools and private businesses outlining the importance of the census, the census day, and who was to be covered by the Census.
- Posters - Posters were distributed to field workers during the training session highlighting the important aspects of the census. Field workers posted these in public places within their enumeration areas.

4.5 RECRUITMENT AND TRAINING OF ENUMERATORS

The Statistics Office appointed the supervisors who in turn selected enumerators for their respective areas. The tendency was to employ persons who live in the locality because of their familiarity with the people and area, however enumerators were given the option of choosing the area they prefer.

Statistics Officers travelled to each of the islands to conduct the training sessions. Government Representatives were advised of the arrival of the Census Officer and were given an outline of the objectives of the census project. Communication between the office and the census officer on the field was encouraged.

Training of census enumerators was generally conducted in the early evenings, as this was the most convenient time for field workers. The training sessions were conducted in a constructive method encouraging feedback from both the supervisors and enumerators.

5 CENSUS TABLES

1. Population Structure

- 1.1 Population and Land Area by Island
- 1.2 Total Population by Island and Five Year Age Groups
- 1.3 Resident Population by Sex, Island and Five Year Age Groups
- 1.4 Female Resident Population (Mothers) Aged 15 Years and Over by Age Groups and Number of Children Ever Born Alive and Children Still Living
- 1.5 Female Resident Population (Mothers) Aged 15 Years and Over by Age Groups and Mother's Age at Birth of First Child and Last Child
- 1.6 Resident Population by Island and Island of Usual Residence
- 1.7 Resident Population by Island and Island of Usual Residential Address One Year Ago
- 1.8 Resident Population by Island and Island of Usual Residential Address Five Years Ago
- 1.9 Resident Population by Island and Place of Birth

2. Social Characteristics

- 2.1 Resident Population by Sex, Island and Ethnic Origin
- 2.2 Resident Population by Sex, Island and Religious Affiliation
- 2.3 Resident Population Aged 15 Years and Over by Sex, Island and Marital Status
- 2.4 Resident Population Aged 15 Years and Over by Sex, Age Groups and Marital Status
- 2.5 Resident Population Aged 15 Years and Over by Sex, Island and Highest Educational Level Completed
- 2.6 Resident Population Aged 15 Years and Over by Sex, Age Groups and Highest Educational Level Completed
- 2.7 Resident Population Aged 15 Years and Over by Sex, Island and Highest Educational Qualification Gained
- 2.8 Resident Population Aged 15 Years and Over by Sex, Island, Age Groups and Highest Qualification Gained
- 2.9 Resident Population Aged 15 Years and Over by Island, Sex and Trade Vocational/ Professional Qualification Gained
- 2.10 Resident Population Aged 15 Years and Over by Sex, Age Groups and Trade, Vocational or Professional Qualification Gained

3. Economic Characteristics

- 3.1 Resident Population Aged 15 Years and Over by Sex, Activity Status and Island
- 3.2 Resident Population Aged 15 Years and Over by Sex, Age Groups and Activity Status
- 3.3 Resident Population Aged 15 Years and Over by Sex, Island and Activity Status
- 3.4 Employed Population by Sex, Principal Occupational Classification and Island
- 3.5 Employed Population by Sex, Principal Occupational Classification and Age Groups
- 3.6 Employed Population by Sex, Island and Principal Employer
- 3.7 Employed Population by Sex, Age Groups and Principal Employer
- 3.8 Employed Population by Sex, Principal Industrial Classification and Island
- 3.9 Employed Population by Sex, Industrial Classification and Age Groups
- 3.10 Resident Population Aged 15 Years and Over by Sex, Island and Engaged in Home Duties
- 3.11 Resident Population Aged 15 Years and Over by Sex, Age Groups and Engaged in Home Duties
- 3.12 Resident Population Aged 15 Years and Over by Sex, Island and Income

- 3.13 Resident Population Aged 15 Years and Over by Sex, Age Groups and Source of Welfare Benefits
- 3.14 Resident Population Aged 15 Years and Over by Sex, Island and Land Tenure
- 3.15 Resident Population Aged 15 Years and Over by Sex, Island, Sole Occupation Rights and Purpose of Sole Occupation Right
- 3.16 Resident Population Aged 15 Years and Over by Sex, Island, Joint Occupation Rights and Purpose of Joint Occupation Right
- 3.17 Resident Population Aged 15 Years and Over by Sex, Island, Leasehold/ Sub - Leasehold and Purpose of Leasehold / Sub - leasehold Right

4. Household Size and Composition

- 4.1 Occupied Dwellings by Island, Type of Dwelling and Number of Persons by Sex
- 4.2 Private Occupied Dwellings by Island and Number of Persons in Household
- 4.3 Resident Population by Sex, Island, and Relationship to Head of Household

5. Housing/Dwelling Characteristics

- 5.1 Private Occupied Dwellings by Island and Year Dwelling was Constructed
- 5.2 Private Occupied Dwellings by Island and Tenure of Dwelling
- 5.3 Rented Occupied Dwellings by Island and Weekly Rent Paid
- 5.4 Private Occupied Dwellings by Island and Outer Walls Construction Material
- 5.5 Private Occupied Dwellings by Island and Roof Construction Material
- 5.6 Private Occupied Dwellings by Island and Number of Rooms (excl. kitchen & veranda)
- 5.7 Private Occupied Dwellings by Island and Floor Construction Material
- 5.8 Private Occupied Dwellings and Source of Water
- 5.9 Private Occupied Dwellings by Island and Principal Means of Cooking
- 5.10 Private Occupied Dwellings by Island, Appliances and Amenities
- 5.11 Private Occupied Dwellings by Island and Energy Driven Cooking Appliances
- 5.12 Private Occupied Dwellings by Island and Energy Household Appliances
- 5.13 Private Occupied Dwellings by Island and Energy Entertainment Appliances
- 5.14 Private Occupied Dwellings by Island and Energy Driven Hardware Tools
- 5.15 Private Occupied Dwellings by Island, and Type of Motor Vehicles
- 5.16 Private Occupied Dwellings by Island and Agriculture Activity
- 5.17 Private Occupied Dwellings by Island and Farm Machinery
- 5.18 Total number of Livestock, including Pets by Island
- 5.19 Private Occupied Dwellings Engaged in Fishing Activities
- 5.20 Fishing Equipment by Island

Table 1.1: Population and Land Area by Island

Census Year	Cook Islands	Rarotonga	Aitutaki	Mangaia	Atiu	Mauke	Mitiaro	Manuae	Manihiki	Penrhyn	Rakahanga	Pukapuka	Nassau	Palmerston	Suvarow
	Land area in square kilometre														
	236.7	67.1	18.3	51.8	26.9	18.4	22.3	6.2	5.4	9.8	4.1	1.3	1.3	2.1	0.4
	Population														
1902	8,213	2,060	1,170	1,541	918	370	165	10	484	445	400	505	-	115	30
1906	8,518	2,441	1,162	1,531	918	446	210	-	521	420	352	435	-	82	-
1911	8,655	2,759	1,237	1,471	812	457	199	29	444	335	315	490	-	107	-
1916	8,805	3,064	1,302	1,245	759	490	237	23	493	326	295	474	-	90	7
1921	9,459	3,503	1,373	1,230	837	578	207	-	492	376	310	530	-	83	-
1926	10,082	3,936	1,431	1,249	933	511	238	23	416	395	327	526	-	97	-
1936	12,246	5,054	1,719	1,459	1,086	652	265	8	487	467	290	651	18	90	-
1945	14,088	5,573	2,356	1,845	1,114	804	229	28	435	654	318	682	-	65	5
1951	15,079	6,048	2,396	1,830	1,270	836	305	20	816	527	261	559	124	87	-
1956	16,680	7,212	2,565	1,970	1,307	815	275	32	661	619	341	638	110	77	58
1961	18,378	8,676	2,582	1,877	1,266	785	307	18	1,006	628	319	718	109	86	1
1966	19,247	9,971	2,579	2,002	1,327	671	293	15	584	545	323	684	167	86	-
1971	21,322	11,478	2,855	2,081	1,455	763	331	2	452	612	339	732	160	62	-
1976	18,126	9,802	2,423	1,530	1,312	710	305	-	266	531	283	785	123	56	-
1981	17,743	9,530	2,335	1,364	1,225	681	256	-	405	608	269	797	137	51	-
1986	17,614	9,826	2,390	1,229	957	692	273	-	508	497	282	761	119	66	6
1991	18,617	10,886	2,357	1,214	1,006	639	247	-	663	503	282	670	102	49	10
1996	19,103	11,225	2,389	1,108	956	652	319	-	668	606	249	779	99	49	4

Table 1.2: Total Population by Island and Five Year Age Groups

Island & Region	Total	<5	5-9	10-14	15-19	20-24	25-29	30-34	35-39	40-44	45-49	50-54	55-59	60-64	65-69	70-74	75-79	>79
COOK ISLANDS	19,103	2,451	2,245	1,906	1,690	1,633	1,596	1,474	1,182	883	851	807	765	595	431	291	167	136
RAROTONGA	11,225	1,354	1,152	991	927	1,004	1,023	939	759	579	595	528	478	358	243	152	84	59
SOUTHERN GROUP	5,424	707	747	631	525	417	383	369	276	220	205	211	214	183	129	102	55	50
Aitutaki	2,389	311	325	292	219	173	180	173	139	108	87	95	95	80	42	31	16	23
Mangaia	1,108	148	154	125	102	72	78	71	55	31	47	50	45	40	40	24	14	12
Aitutau	956	111	140	94	104	80	71	62	40	40	39	35	32	36	27	24	15	6
Mauke	652	88	87	84	73	56	37	32	31	29	23	25	29	17	14	15	7	5
Mitiaro	319	49	41	36	27	36	17	31	11	12	9	6	13	10	6	8	3	4
NORTHERN GROUP	2,454	390	346	284	238	212	190	166	147	84	51	68	73	54	59	37	28	27
Palmerston	49	8	3	6	5	3	4	4	1	2	1	2	-	4	1	4	-	1
Pukapuka	779	127	113	102	90	65	56	49	40	19	13	20	22	13	19	12	8	11
Nassau	99	22	15	11	9	12	5	5	5	1	1	4	2	3	3	1	-	-
Manihiki	668	96	101	68	47	49	54	61	59	33	13	16	20	16	15	7	11	2
Rakahanga	249	35	26	29	25	29	16	15	14	8	10	10	11	7	6	2	2	4
Penthyne	606	101	88	68	61	54	54	32	27	21	13	16	18	11	15	11	7	9
Suvarrow	4	1	-	-	1	-	1	-	1	-	-	-	-	-	-	-	-	-

Table: 1.3: Resident Population by Sex, Island and Five Year Age Groups

Sex : Both

Island & Region	Total	<5	5-9	10-14	15-19	20-24	25-29	30-34	35-39	40-44	45-49	50-54	55-59	60-64	65-69	70-74	75-79	>79
COOK ISLANDS	18,034	2,395	2,193	1,879	1,846	1,563	1,455	1,333	1,075	817	768	713	704	545	389	267	157	135
RAROTONGA	10,337	1,313	1,119	967	894	939	901	820	670	523	526	451	430	316	203	132	74	59
SOUTHERN GROUP	5,258	692	731	628	514	412	366	348	260	212	193	195	201	176	127	99	55	49
Aitutaki	2,272	304	321	291	212	169	166	156	125	101	77	82	85	77	40	28	16	22
Mangala	1,083	143	148	124	99	72	77	69	55	31	46	49	42	38	40	24	14	12
Atiu	942	109	137	94	103	79	71	60	39	40	39	33	32	34	27	24	15	6
Mauke	643	87	84	84	73	56	35	32	30	28	22	25	29	17	14	15	7	5
Mitiaro	318	49	41	35	27	36	17	31	11	12	9	6	13	10	6	8	3	4
NORTHERN GROUP	2,439	390	343	284	238	212	188	165	145	82	49	67	73	53	59	36	28	27
Palmerston	49	8	3	6	5	3	4	4	1	2	1	2	-	4	1	4	-	1
Pukapuka	778	127	113	102	90	65	56	49	40	19	13	20	22	13	19	11	8	11
Nassau	99	22	15	11	9	12	5	5	5	1	1	4	2	3	3	1	-	-
Manihiki	656	96	98	68	47	49	52	60	57	31	12	16	20	15	15	7	11	2
Rakahanga	249	35	26	29	25	29	16	15	14	8	10	10	11	7	6	2	2	4
Penrhyn	604	101	88	68	61	54	54	32	27	21	12	15	18	11	15	11	7	9
Suvarrow	4	1	-	-	1	-	1	-	1	-	-	-	-	-	-	-	-	-

Table: 1.3: Resident Population by Sex, Island and Five Year Age Groups

Sex : Male

Island & Region	Total	<5	5-9	10-14	15-19	20-24	25-29	30-34	35-39	40-44	45-49	50-54	55-59	60-64	65-69	70-74	75-79	>79
COOK ISLANDS	9,297	1,251	1,151	971	861	788	727	706	545	393	408	356	359	299	209	145	75	55
RAROTONGA	5,277	673	583	490	470	464	450	417	337	249	278	222	220	176	112	72	39	25
SOUTHERN GROUP	2,710	346	392	339	263	215	176	192	133	100	105	100	98	98	62	52	24	15
Aitutaki	1,158	158	162	155	109	90	71	91	60	49	38	44	42	44	19	14	5	7
Mangala	553	71	79	66	50	31	47	35	25	14	30	22	19	20	20	13	8	3
Ai'u	485	46	74	50	49	50	33	31	21	21	18	18	18	20	16	8	8	4
Mauke	338	41	51	47	43	26	16	15	19	11	16	13	13	8	5	11	2	1
Mitiaro	176	30	26	21	12	18	9	20	8	5	3	3	6	6	2	6	1	-
NORTHERN GROUP	1,310	232	176	142	128	107	101	97	75	44	25	34	41	25	35	21	12	15
Palmerston	25	3	1	4	1	2	3	2	1	1	1	-	-	2	-	3	-	1
Pukapuka	404	77	63	46	43	28	27	32	20	6	6	10	13	8	9	5	5	6
Nassau	54	15	8	6	6	3	3	5	-	-	-	3	1	1	2	1	-	-
Manihiki	368	57	47	37	33	28	25	31	31	23	7	7	12	7	14	6	2	1
Rakahanga	135	23	14	18	13	15	11	10	6	1	5	5	4	4	2	-	1	3
Penrhyn	321	56	43	31	31	31	31	17	17	13	6	9	11	3	8	6	4	4
Suvarrow	3	1	-	-	1	-	1	-	-	-	-	-	-	-	-	-	-	-

Table 1.3: Resident Population by Sex, Island and Five Year Age Groups

Sex : Female

Island & Region	Total	<5	5-9	10-14	15-19	20-24	25-29	30-34	35-39	40-44	45-49	50-54	55-59	60-64	65-69	70-74	75-79	>79
COOK ISLANDS	8,737	1,144	1,042	908	785	777	728	627	530	424	360	357	345	246	180	122	82	80
RAROTONGA	5,060	640	536	477	424	475	451	403	333	274	248	229	210	140	91	60	35	34
SOUTHERN GROUP	2,548	346	339	289	251	197	190	156	127	112	88	95	103	78	65	47	31	34
Aitutaki	1,114	146	159	136	103	79	95	65	65	52	39	38	43	33	21	14	11	15
Mangaia	530	72	69	58	49	41	30	34	30	17	16	27	23	18	20	11	6	9
Atiu	457	63	63	44	54	29	38	29	18	19	21	15	14	14	11	16	7	2
Mauke	305	46	33	37	30	30	19	17	11	17	6	12	16	9	9	4	5	4
Mitiaro	142	19	15	14	15	18	8	11	3	7	6	3	7	4	4	2	2	4
NORTHERN GROUP	1,129	158	167	142	110	105	87	68	70	38	24	33	32	28	24	15	16	12
Palmerston	24	5	2	2	4	1	1	2	-	1	-	2	-	2	1	1	-	-
Pukapuka	374	50	50	56	47	37	29	17	20	13	7	10	9	5	10	6	3	5
Nassau	45	7	7	5	3	9	2	-	5	1	1	1	1	2	1	-	-	-
Manihiki	288	39	51	31	14	21	27	29	26	8	5	9	8	8	1	1	9	1
Rakahanga	114	12	12	11	12	14	5	5	8	7	5	5	7	3	4	2	1	1
Penrhyn	283	45	45	37	30	23	23	15	10	8	6	6	7	8	7	5	3	5
Suvarrow	1	-	-	-	-	-	-	-	1	-	-	-	-	-	-	-	-	-

Table 1.4 : Female Resident Population (Mothers) Aged 15 Years and Over by AgeGroups and Number of Children Born Alive and Children Still Living

Current Age Group of Mothers	Total	0	1	2	3	4	5	6	7	8	9	10	11	>11
Total Children Born Alive														
Total	4,086	-	793	751	632	523	363	286	214	142	108	98	68	108
15 - 19	98	-	91	6	1	-	-	-	-	-	-	-	-	-
20 - 24	455	-	249	150	46	9	1	-	-	-	-	-	-	-
25 - 29	557	-	148	168	133	80	19	7	1	1	-	-	-	-
30 - 34	539	-	95	129	127	92	47	29	14	5	-	1	-	-
35 - 39	470	-	74	88	101	79	62	28	21	13	3	1	-	2
40 - 44	385	-	25	63	65	73	61	44	25	9	10	4	4	2
45 - 49	331	-	19	39	48	60	44	51	22	20	5	12	5	6
50 - 54	322	-	24	28	39	45	42	27	39	24	14	16	12	12
55 - 59	324	-	23	32	31	32	47	33	42	19	16	21	11	17
60 - 64	212	-	14	21	19	17	14	26	20	20	22	14	13	12
>64	393	-	31	29	22	36	26	41	30	31	38	29	23	57
Total Children Still Alive														
Total	4,086	35	784	766	644	533	377	273	221	144	114	85	59	51
15 - 19	98	-	91	6	1	-	-	-	-	-	-	-	-	-
20 - 24	455	8	246	147	45	8	1	-	-	-	-	-	-	-
25 - 29	557	6	147	167	132	78	18	6	1	1	-	1	-	-
30 - 34	539	7	91	130	130	92	45	27	11	5	-	1	-	-
35 - 39	470	3	72	88	99	81	65	27	19	11	2	1	1	1
40 - 44	385	4	23	62	69	72	61	44	22	10	12	3	2	1
45 - 49	331	-	19	41	51	60	49	45	24	16	8	9	6	3
50 - 54	322	1	24	32	37	49	44	25	43	20	18	14	7	8
55 - 59	324	-	26	35	34	31	46	35	48	13	21	13	11	11
60 - 64	212	2	14	24	16	21	18	22	23	23	22	11	9	7
>64	393	4	31	34	30	41	30	42	30	45	31	32	23	20

Table 1.5 : Female Resident Population (Mothers) Aged 15 Years and Over by Age Groups and Mother's Age at Birth of First and Last Child

Current Age Group of Mothers	Total	10 - 14	15 - 19	20 - 24	25 - 29	30 - 34	35 - 39	40 - 44	45-49
Mother's Age at Birth of First Child									
Total	4,086	28	1,446	1,950	503	125	31	3	-
15 - 19	98	3	95	-	-	-	-	-	-
20 - 24	455	7	242	206	-	-	-	-	-
25 - 29	557	2	220	270	65	-	-	-	-
30 - 34	539	-	173	261	79	26	-	-	-
35 - 39	470	1	150	227	70	17	5	-	-
40 - 44	385	1	131	188	49	13	3	-	-
45 - 49	331	3	98	179	37	11	2	1	-
50 - 54	322	5	106	148	53	7	3	-	-
55 - 59	324	2	85	182	46	7	1	1	-
60 - 64	212	1	45	106	43	13	3	1	-
>64	393	3	101	183	61	31	14	-	-
Mother's Age at Birth of Last Child									
Total	4,086	9	315	819	959	915	641	370	58
15 - 19	98	2	96	-	-	-	-	-	-
20 - 24	455	4	122	329	-	-	-	-	-
25 - 29	557	1	31	213	312	-	-	-	-
30 - 34	539	-	18	68	228	225	-	-	-
35 - 39	470	-	23	59	72	188	128	-	-
40 - 44	385	-	6	41	83	109	99	47	-
45 - 49	331	1	1	31	69	98	74	53	4
50 - 54	322	-	5	25	72	85	83	49	3
55 - 59	324	-	3	24	65	94	81	45	12
60 - 64	212	-	5	8	34	51	60	49	5
>64	393	1	5	21	24	65	116	127	34

Table 1.6: Resident Population by Island and Island of Usual Residence

Island & Region	Usual Residence													
	Total Rarotonga	Aitutaki	Mangaia	Atiu	Mauke	Mitiaro	Palmerston	Pukapuka	Nassau	Manihiki	Rakahanga	Penrhyn	Suvarrow	
COOK ISLANDS	18,034	10,352	2,271	1,075	943	641	317	48	779	100	650	255	599	4
RAROTONGA	10,337	10,329	5	-	1	1	-	-	-	1	-	-	-	-
SOUTHERN GROUP	5,258	18	2,266	1,075	942	640	317	-	-	-	-	-	-	-
Aitutaki	2,272	10	2,262	-	-	-	-	-	-	-	-	-	-	-
Mangaia	1,083	6	2	1,075	-	-	-	-	-	-	-	-	-	-
Atiu	942	-	1	-	941	-	-	-	-	-	-	-	-	-
Mauke	643	1	1	-	1	640	-	-	-	-	-	-	-	-
Mitiaro	318	1	-	-	-	-	317	-	-	-	-	-	-	-
NORTHERN GROUP	2,439	5	-	-	-	-	-	48	779	99	650	255	599	4
Palmerston	49	-	-	-	-	-	-	48	1	-	-	-	-	-
Pukapuka	778	-	-	-	-	-	-	-	778	-	-	-	-	-
Nassau	99	-	-	-	-	-	-	-	-	99	-	-	-	-
Manihiki	656	-	-	-	-	-	-	-	-	-	650	6	-	-
Rakahanga	249	-	-	-	-	-	-	-	-	-	-	249	-	-
Penrhyn	604	5	-	-	-	-	-	-	-	-	-	-	599	-
Suvarrow	4	-	-	-	-	-	-	-	-	-	-	-	-	4

Table 1.7: Resident Population by Island and Usual Residential Address One Year Ago

Island & Region	Usual Residential Address One Year Ago																
	Total ¹	Rarotonga	Aitutaki	Mangaia	Afii	Mauke	Mitiaro	Manuae	Palmerston	Pukapuka	Nassau	Manihiki	Rakahanga	Penrhyn	Suvarrow	New Zealand Countries	Other
COOK ISLANDS	17,514	9,652	2,208	1,055	926	627	308	1	55	740	113	616	245	566	5	277	120
RAROTONGA	10,052	9,492	62	33	37	34	6	1	9	14	4	32	10	17	1	209	91
SOUTHERN GROUP	5,109	97	2,140	1,022	886	593	302	-	2	3	-	9	-	-	-	43	12
Aitutaki	2,219	46	2,131	4	2	-	-	-	2	1	-	-	-	-	-	29	4
Mangaia	1,047	11	2	1,018	-	1	-	-	-	1	-	4	-	-	-	8	2
Afii	917	18	5	-	883	-	-	-	-	-	-	5	-	-	-	5	1
Mauke	622	20	2	-	1	592	1	-	-	1	-	-	-	-	-	1	4
Mitiaro	304	2	-	-	-	-	301	-	-	-	-	-	-	-	-	-	1
NORTHERN GROUP	2,353	63	6	-	3	-	-	-	44	723	109	575	235	549	4	25	17
Palmerston	47	1	-	-	-	-	-	-	44	1	-	-	-	-	-	1	-
Pukapuka	748	12	-	-	-	-	-	-	-	719	9	-	-	-	-	8	-
Nassau	98	-	-	-	-	-	-	-	-	-	98	-	-	-	-	-	-
Manihiki	639	31	3	-	3	-	-	-	-	1	2	569	9	1	1	10	9
Rakahanga	240	4	1	-	-	-	-	-	-	2	-	6	226	-	-	1	-
Penrhyn	577	14	2	-	-	-	-	-	-	-	-	-	-	548	-	5	8
Suvarrow	4	1	-	-	-	-	-	-	-	-	-	-	-	-	3	-	-

Note: ¹ The difference between resident population and the total given in this table is those not yet born one year ago.

Table 1.8: Resident Population by Island and Usual Residential Address Five Years Ago

Island & Region	Total ¹	Usual Address Five Years Ago											New Zealand	Other Countries
		Rarotonga	Aitutaki	Mangaia	Atiu	Mauke	Mitiaro	Palmerston	Pukapuka	Nassau	Manihiki	Rakahanga	Penthyr	Suvarrow
COOK ISLANDS	15,666	7,659	1,935	953	863	554	259	50	599	94	560	219	424	8
RAROTONGA	9,034	7,380	130	74	91	67	6	10	21	5	76	10	15	2
SOUTHERN GROUP	4,577	141	1,799	870	772	486	253	2	7	-	12	5	1	-
Aitutaki	1,971	63	1,787	9	5	-	3	2	5	-	2	-	-	-
Mangaia	942	11	4	859	-	3	1	-	1	-	2	5	1	-
Atiu	835	26	4	1	765	2	-	-	-	-	7	-	-	-
Mauke	560	30	3	1	1	479	2	-	1	-	-	-	-	-
Mitiaro	269	11	1	-	1	2	247	-	-	-	1	-	-	-
NORTHERN GROUP	2,055	138	6	9	-	1	-	38	571	89	472	204	408	6
Palmerston	41	1	-	-	-	-	-	38	-	-	-	-	-	-
Pukapuka	653	35	1	-	-	-	-	-	568	11	3	1	1	-
Nassau	78	-	-	-	-	-	-	-	-	78	-	-	-	-
Manihiki	562	51	1	-	-	-	-	-	2	-	464	7	6	3
Rakahanga	215	6	-	2	-	-	-	-	1	-	3	196	-	-
Penthyr	503	45	4	7	-	1	-	-	-	-	2	-	401	-
Suvarrow	3	-	-	-	-	-	-	-	-	-	-	-	-	3

Note: ¹ The difference between resident population and the total given in this table is those not yet born five years ago.

Table 1.9: Resident Population by Island and Place of Birth

Island & Region	Place of Birth															New Zealand Countries	
	Total Rarotonga	Aitutaki	Mangaia	Afii	Mauke	Mitiaro	Manuae	Palmerston	Pukapuka	Nassau	Manihiki	Rakahanga	Penrhyn Suvarrow	Other			
COOK ISLANDS	18,034	7,073	2,076	1,282	1,124	732	319	13	57	534	59	434	185	352	2	2,095	683
RAROTONGA	10,337	6,093	465	410	407	246	94	5	23	117	16	189	71	96	1	1,545	559
SOUTHERN GROUP	5,258	789	1,598	867	706	474	217	1	4	20	-	29	10	23	1	424	95
Aitutaki	2,272	299	1,574	30	37	15	1	1	4	9	-	16	5	10	1	223	47
Mangaia	1,083	132	11	811	7	3	4	-	-	8	-	-	4	4	-	88	11
Afii	942	167	9	17	643	12	7	-	-	-	-	9	-	1	-	59	18
Mauke	643	101	3	7	15	435	9	-	-	3	-	2	1	5	-	43	19
Mitiaro	318	90	1	2	4	9	196	-	-	-	-	2	-	3	-	11	-
NORTHERN GROUP	2,439	191	13	5	11	12	8	7	30	397	43	216	104	233	-	126	29
Palmerston	49	7	-	1	-	-	-	-	33	1	-	-	-	1	-	6	-
Pukapuka	778	45	3	1	1	2	-	-	-	661	29	4	2	1	-	29	-
Nassau	99	9	2	-	1	-	-	-	-	50	33	1	-	-	-	3	-
Manihiki	656	154	8	7	7	5	1	1	2	13	1	329	26	12	-	64	26
Rakahanga	249	49	-	1	2	2	1	-	-	10	-	15	146	4	-	16	3
Penrhyn	604	106	7	1	4	2	-	-	5	-	-	11	3	384	-	61	20
Suvarrow	4	3	-	-	-	-	-	-	-	-	-	-	-	-	-	1	-

Table 2.1 : Resident Population by Sex, Island and Ethnic Origin

Island & Region	Total					Male					Female				
	Total	Cook Island Maori	Cook Island Maori	Part Cook Island Maori	Other Ethnic Origin	Total	Cook Island Maori	Cook Island Maori	Part Cook Island Maori	Other Ethnic Origin	Total	Cook Island Maori	Cook Island Maori	Part Cook Island Maori	Other Ethnic Origin
COOK ISLANDS	18,034	16,284	920	830	9,297	8,343	480	474	8,737	7,941	440	356			
RAROTONGA	10,337	8,848	754	735	5,277	4,462	397	418	5,060	4,386	357	317			
SOUTHERN GROUP	5,258	5,070	111	77	2,710	2,614	52	44	2,548	2,456	59	33			
Aitutaki	2,272	2,125	93	54	1,158	1,085	42	31	1,114	1,040	51	23			
Mangala	1,083	1,071	9	3	553	547	5	1	530	524	4	2			
Atiu	942	927	4	11	485	477	2	6	457	450	2	5			
Mauke	643	629	5	9	338	329	3	6	305	300	2	3			
Mitiaro	318	318	-	-	176	176	-	-	142	142	-	-			
NORTHERN GROUP	2,439	2,366	55	18	1,310	1,267	31	12	1,129	1,099	24	6			
Palmerston	49	48	1	-	25	24	1	-	24	24	-	-			
Pukapuka	778	772	6	-	404	403	1	-	374	369	5	-			
Nassau	99	99	-	-	54	54	-	-	45	45	-	-			
Manihiki	656	611	30	15	368	341	18	9	288	270	12	6			
Rakahanga	249	241	7	1	135	129	5	1	114	112	2	-			
Penthyon	604	592	10	2	321	314	5	2	283	278	5	-			
Suvarrow	4	3	1	-	3	2	1	-	1	1	-	-			

Table 2.2 : Resident Population by Sex, Island and Religious Affiliation

Sex : Both

Island & Region	Religious Affiliation											
	Total	Cook Islands Christian Church	Roman Catholic	Seventh Day Adventist	Church of Latter Days Saint	Assembly of God	Apostolic Church	Jehovah Witness	Holy Spirit Church	Presbyterian Church	Other Religion	Object
COOK ISLANDS	18,034	10,498	3,076	1,365	642	355	315	280	273	115	280	485
RAROTONGA	10,337	5,836	1,788	620	427	287	177	201	100	49	168	389
SOUTHERN GROUP	5,258	2,906	894	540	206	61	138	78	161	66	84	81
Aitutaki	2,272	1,069	197	445	124	3	46	51	159	63	45	51
Mangala	1,083	776	53	11	74	50	31	5	2	3	30	28
Atiu	942	575	209	70	-	-	61	22	-	-	2	1
Mauke	643	277	334	14	8	-	-	-	-	-	7	1
Mitiaro	318	209	101	-	-	8	-	-	-	-	-	-
NORTHERN GROUP	2,439	1,756	394	205	9	7	-	1	12	-	28	15
Palmerston	49	49	-	-	-	-	-	-	-	-	-	-
Pukapuka	778	570	130	74	-	1	-	-	-	-	-	3
Nassau	99	30	25	44	-	-	-	-	-	-	-	-
Manihiki	656	348	195	52	8	1	-	1	5	-	24	11
Rakahanga	249	202	20	20	-	-	-	-	7	-	-	-
Penthyon	604	556	21	15	1	5	-	-	-	-	4	1
Suvarrow	4	1	3	-	-	-	-	-	-	-	-	-

Table 2.2 : Resident Population by Sex, Island and Religious Affiliation

Sex : Male

Island & Region	Religious Affiliation											
	Total	Cook Islands Christian Church	Roman Catholic	Seven Days Saint	Church of Latter Days Saint	Assembly of God	Apostolic Church	Jehovah Witness	Holy Spirit	Presbyterian Church	Other Religion	Object
COOK ISLANDS	9,297	5,491	1,545	683	318	176	160	128	143	52	135	276
RAROTONGA	5,277	3,022	878	311	204	142	91	94	45	23	83	227
SOUTHERN GROUP	2,710	1,539	447	262	108	31	69	34	91	29	38	38
Aitutaki	1,158	553	92	221	69	3	26	20	90	28	22	23
Mangala	553	407	28	7	34	26	12	2	1	1	12	13
Aitu	485	309	99	30	-	-	31	12	-	-	1	1
Mauke	338	148	176	4	5	-	-	-	-	-	3	1
Mitiaro	176	122	52	-	-	2	-	-	-	-	-	-
NORTHERN GROUP	1,310	930	220	110	6	3	-	-	7	-	14	11
Palmerston	25	25	-	-	-	-	-	-	-	-	-	-
Pukapuka	404	290	76	36	-	-	-	-	-	-	-	2
Nassau	54	12	13	29	-	-	-	-	-	-	-	-
Manihiki	368	194	108	29	5	-	-	-	3	-	13	8
Rakahanga	135	115	8	8	-	-	-	-	4	-	-	-
Penrhyn	321	293	13	8	1	3	-	-	-	-	1	1
Suvarrow	3	1	2	-	-	-	-	-	-	-	-	-

Table 2.2 : Resident Population by Sex, Island and Religious Affiliation

Sex : Female

Island & Region	Religious Affiliation											
	Total	Cook Islands Christian Church	Roman Catholic	Seven Days Saint	Church of Latter Days Saint	Assembly of God	Apostolic Church	Jehovah Witness	Holy Spirit Church	Other Religion	No Religion	Object
COOK ISLANDS	8,737	5,007	1,531	682	324	179	155	152	130	145	209	160
RAROTONGA	5,060	2,814	910	309	223	145	86	107	55	85	162	138
SOUTHERN GROUP	2,548	1,367	447	278	98	30	69	44	70	46	43	19
Aitutaki	1,114	516	105	224	55	-	20	31	69	23	28	8
Mangata	530	369	25	4	40	24	19	3	1	18	15	10
Atiu	457	266	110	40	-	-	30	10	-	1	-	-
Mauke	305	129	158	10	3	-	-	-	-	4	-	1
Mitiaro	142	87	49	-	-	6	-	-	-	-	-	-
NORTHERN GROUP	1,129	826	174	95	3	4	-	1	5	14	4	3
Palmerston	24	24	-	-	-	-	-	-	-	-	-	-
Pukapuka	374	280	54	38	-	1	-	-	-	-	1	-
Nassau	45	18	12	15	-	-	-	-	-	-	-	-
Manihiki	288	154	87	23	3	1	-	1	2	11	3	3
Rakahanga	114	87	12	12	-	-	-	-	3	-	-	-
Penthyon	283	263	8	7	-	2	-	-	-	3	-	-
Suvarrow	1	-	1	-	-	-	-	-	-	-	-	-

Table 2.3 : Resident Population Aged 15 Years and Over by Sex, Island and Marital Status

Island & Region	Total						Male						Female					
	Total	Never Married	Married	Widowed	Seperated from legal Partner	Divorced	Total	Never Married	Married	Widowed	Seperated from legal Partner	Divorced	Total	Never Married	Married	Widowed	Seperated from legal Partner	Divorced
COOK ISLANDS	11,567	5,255	5,326	561	187	238	5,924	2,849	2,652	190	101	132	5,643	2,406	2,674	371	86	106
RAROTONGA	6,938	3,156	3,171	303	132	176	3,531	1,698	1,565	102	72	94	3,407	1,458	1,606	201	60	82
SOUTHERN GROUP																		
Aitutaki	3,207	1,417	1,517	198	41	34	1,633	770	762	61	22	18	1,574	647	755	137	19	16
Mangaia	1,356	563	672	75	25	21	683	305	338	17	14	9	673	258	334	58	11	12
Ai'u	668	314	289	53	8	4	337	162	147	21	4	3	331	152	142	32	4	1
Mauke	602	263	297	36	3	3	315	146	150	16	2	1	287	117	147	20	1	2
Mitiaro	388	190	168	21	4	5	199	106	83	4	2	4	189	84	85	17	2	1
	193	87	91	13	1	1	99	51	44	3		1	94	36	47	10	1	-
NORTHERN GROUP																		
Palmerston	1,422	682	638	60	14	28	760	381	325	27	7	20	662	301	313	33	7	8
Pukapuka	32	17	12	2	-	1	17	9	5	2	-	1	15	8	7	-	-	-
Nassau	436	208	188	23	6	11	218	103	95	9	4	7	218	105	93	14	2	4
Manihiki	51	25	26	-	-	-	25	12	13	-	-	-	26	13	13	-	-	-
Rakahanga	394	176	182	22	4	10	227	107	96	12	3	9	167	69	86	10	1	1
Penthyon	159	85	69	4	1	-	80	46	34	-	-	-	79	39	35	4	1	-
Suwarrow	347	169	161	9	2	6	191	102	82	4	-	3	156	67	79	5	2	3
	3	2	-	-	1	-	2	2	-	-	-	-	1	-	-	-	1	-

**Table 2.4 : Resident Population Aged 15 Years and Over by Sex,
Age Groups and Marital Status**

Age Group	Marital Status					
	Total	Never Married	Married	Widowed	Separated form legal Partner	Divorced
Total						
Total	11,567	5,255	5,326	561	187	238
15 - 19	1,646	1,617	25	2	1	1
20 - 24	1,563	1,333	226	2	2	-
25 - 29	1,455	960	493	2	5	5
30 - 34	1,333	574	713	6	25	15
35 - 39	1,075	313	667	11	48	36
40 - 44	817	132	612	17	20	36
45 - 49	768	98	585	14	18	53
50 - 54	713	61	547	47	24	34
55 - 59	704	53	543	60	23	25
60 - 64	545	52	388	76	11	18
> 64	948	72	527	324	10	15
Male						
Total	5,924	2,849	2,652	190	101	132
15 - 19	861	849	9	2	-	1
20 - 24	786	691	93	2	-	-
25 - 29	727	511	212	1	1	2
30 - 34	706	335	351	2	9	9
35 - 39	545	168	331	4	26	16
40 - 44	393	78	284	4	7	20
45 - 49	408	60	300	5	12	31
50 - 54	356	34	275	13	18	16
55 - 59	359	33	276	20	14	16
60 - 64	299	40	209	29	8	13
> 64	484	50	312	108	6	8
Female						
Total	5,643	2,406	2,674	371	86	106
15 - 19	785	768	16	-	1	-
20 - 24	777	642	133	-	2	-
25 - 29	728	439	281	1	4	3
30 - 34	627	239	362	4	16	6
35 - 39	530	145	336	7	22	20
40 - 44	424	54	328	13	13	16
45 - 49	360	38	285	9	6	22
50 - 54	357	27	272	34	6	18
55 - 59	345	20	267	40	9	9
60 - 64	246	12	179	47	3	5
> 64	464	22	215	216	4	7

Table 2.5 : Resident Population Aged 15 Years and Over by Sex, Island and Highest Educational Level Completed

Sex : Both

Island & Region	Educational Level																			
	Total	No Schooling	Not Stated	Special Education	Primary						Secondary						Tertiary			
					Grade	Grade	Grade	Grade	Grade	Grade	Form	Form	Form	Form	Form	Form	Form	Form	Form	Form
					1	2	3	4	5	6	1	2	3	4	5	6	7	1	2	3
COOK ISLANDS	11,567	114	89	3	8	37	36	234	130	712	380	1,407	949	1,963	3,904	1,018	369	14	15	185
RAROTONGA	6,938	37	54	3	3	15	25	90	57	347	194	742	456	975	2,585	837	324	13	12	169
SOUTHERN GROUP	3,207	39	7	-	4	15	9	107	40	225	149	418	341	699	967	143	28	1	2	13
Atiutaki	1,356	13	2	-	-	1	2	30	16	90	45	194	155	309	409	68	19	1	1	1
Mangala	688	1	1	-	-	2	1	42	8	65	40	76	68	136	179	39	3	-	1	6
Afuu	602	8	3	-	1	4	4	7	9	34	44	75	74	130	182	18	4	-	-	5
Mauke	388	15	-	-	-	1	1	16	4	23	19	57	23	70	146	11	1	-	-	1
Mitiaro	193	2	1	-	3	7	1	12	3	13	1	16	21	54	51	7	1	-	-	-
NORTHERN GROUP	1,422	38	28	-	1	7	2	37	33	140	37	247	152	289	352	38	17	-	1	3
Palmerston	32	2	-	-	-	1	1	4	1	3	2	4	6	3	2	3	-	-	-	-
Pukapuka	436	11	12	-	-	1	-	19	3	47	7	85	31	92	119	8	1	-	-	-
Nassau	51	1	-	-	-	-	-	1	4	4	3	13	4	3	16	2	-	-	-	-
Manihiki	394	16	15	-	-	1	-	3	8	32	9	66	34	81	98	17	10	-	1	3
Rakahanga	159	8	1	-	1	3	-	3	8	13	8	13	22	49	25	4	1	-	-	-
Penthyon	347	-	-	-	-	1	1	7	9	41	8	66	54	61	91	3	5	-	-	-
Suvarrow	3	-	-	-	-	-	-	-	-	-	-	-	1	-	1	1	-	-	-	-

Table 2.5 : Resident Population Aged 15 Years and Over by Sex, Island and Highest Educational Level Completed

Sex : Female

Island & Region	Educational Level																			
	Total	No Schooling	Not Stated	Special Education	Primary						Secondary						Tertiary			
					Grade	Grade	Grade	Grade	Grade	Grade	Form	Form	Form	Form	Form	Form	Stage	Stage	Stage	Stage
					1	2	3	4	5	6	1	2	3	4	5	6	7	I	II	III
COOK ISLANDS	5,643	53	44	3	6	18	13	108	60	326	182	674	418	937	2,041	524	164	5	3	64
RAROTONGA	3,407	17	23	3	2	8	10	40	19	153	100	361	209	483	1,338	425	149	5	3	59
SOUTHERN GROUP	1,574	22	4	-	3	8	3	52	24	109	63	208	138	319	526	82	9	-	-	4
Aitutaki	673	10	2	-	-	-	-	15	11	42	16	98	67	145	230	36	5	-	-	1
Mangaia	331	1	1	-	-	1	-	20	2	36	20	37	30	66	92	23	-	-	-	2
Afiiu	287	1	1	-	1	3	1	3	7	17	13	37	25	54	107	13	3	-	-	1
Mauke	189	10	-	-	-	-	1	6	3	10	13	30	11	33	67	5	-	-	-	-
Mitiaro	94	-	-	-	2	4	1	8	1	4	1	11	5	21	30	5	1	-	-	-
NORTHERN GROUP	662	14	17	-	1	2	-	16	17	64	19	105	71	135	177	17	6	-	-	1
Palmerston	15	-	-	-	-	-	-	3	1	1	2	1	4	1	1	1	-	-	-	-
Pukapuka	218	3	8	-	-	-	-	8	2	23	6	38	17	49	62	2	-	-	-	-
Nassau	26	1	-	-	-	-	-	-	3	-	1	7	3	2	8	1	-	-	-	-
Manihiki	167	5	8	-	-	-	-	2	3	12	4	25	15	34	46	9	3	-	-	1
Rakahanga	79	5	1	-	1	2	-	1	3	7	2	9	9	25	12	1	1	-	-	-
Penrhyn	156	-	-	-	-	-	-	2	5	21	4	25	23	24	48	2	2	-	-	-
Suvarrow	1	-	-	-	-	-	-	-	-	-	-	-	-	-	-	1	-	-	-	-

Table 2.6 : Resident Population Aged 15 Years and Over by Sex, Age Groups and Highest Educational Level Completed

Sex : Both

Age Group	Educational Level																			
	Primary										Secondary									
	Special Education					Grade					Form					Form				
	No	Not Stated	Grade 1	Grade 2	Grade 3	Grade 4	Grade 5	Grade 6	Form 1	Form 2	Form 3	Form 4	Form 5	Form 6	Form 7	Form 8	Form 9	Form 10	Form 11	Form 12
Total	11,567	114	89	3	8	37	36	234	130	712	380	1,407	949	1,963	3,904	1,018	369	14	15	185
15-19	1,646	6	1	1	-	1	-	8	5	15	23	76	167	424	732	145	42	-	-	-
20-24	1,563	12	5	-	-	1	1	6	2	19	30	83	115	294	721	184	80	1	2	7
25-29	1,455	6	6	-	-	1	-	4	4	24	25	59	116	267	673	164	78	-	2	26
30-34	1,333	11	1	1	-	2	1	4	5	24	20	72	96	242	585	190	52	3	1	23
35-39	1,075	5	3	-	-	1	1	9	2	27	11	90	92	218	433	116	31	1	-	35
40-44	817	5	3	1	-	-	2	7	4	24	12	95	60	212	267	72	23	3	6	21
45-49	768	-	6	-	-	2	1	7	5	42	31	130	69	144	223	65	24	3	1	15
50-54	713	2	5	-	2	2	3	10	6	60	36	190	102	84	145	30	10	2	1	23
55-59	703	7	5	-	4	4	4	25	19	112	63	227	79	40	72	19	14	1	1	11
60-64	545	9	16	-	1	5	5	29	23	117	46	190	25	13	35	15	8	-	1	7
>64	949	51	38	-	5	18	18	125	55	248	83	195	28	25	18	18	7	-	-	17

Table 2.6 : Resident Population Aged 15 Years and Over by Sex, Age Groups and Highest Educational Level Completed

Sex : Male

Age Group	Educational Level																			
	Primary										Secondary									
	Total	No	Not	Special	Grade	Grade	Grade	Grade	Grade	Grade	Form	Form	Form	Form	Form	Form	Form	Form	Form	Form
	Schooling	Stated	Education	1	2	3	4	5	6	1	2	3	4	5	6	7	Stage	Stage	Stage	Stage
																	I	II	III	III
Total	5,924	61	45	-	2	19	23	126	70	386	198	733	531	1,026	1,863	494	205	9	12	121
15-19	861	3	-	-	-	-	-	5	4	12	18	56	92	240	350	58	23	-	-	-
20-24	786	8	2	-	-	1	5	1	16	22	53	74	163	327	73	35	-	2	4	4
25-29	727	2	4	-	-	-	4	3	15	9	34	72	148	309	78	38	-	1	10	10
30-34	706	6	1	-	1	-	3	4	14	14	43	59	132	267	113	29	2	1	17	17
35-39	545	3	1	-	1	-	4	1	16	7	48	56	97	215	51	21	1	-	23	23
40-44	393	3	-	-	-	1	5	2	13	6	46	27	102	128	30	12	2	5	11	11
45-49	408	-	4	-	1	1	2	1	24	18	67	37	72	113	38	16	2	1	1	16
50-54	356	2	4	-	1	1	5	4	34	14	84	43	35	82	19	9	1	1	1	9
55-59	359	6	2	-	3	1	12	12	62	29	100	45	16	40	9	11	1	-	-	5
60-64	299	4	9	-	4	3	18	14	62	24	101	11	7	20	11	6	-	-	-	15
>64	484	24	18	-	1	8	15	63	118	37	101	15	14	12	14	5	-	-	-	-

Table 2.6 : Resident Population Aged 15 Years and Over by Sex, Age Groups and Highest Educational Level Completed

Sex : Female

Age Group	Educational Level																			
	Primary										Secondary									
	Total	No	Not	Special	Grade	Grade	Grade	Grade	Grade	Grade	Form	Form	Form	Form	Form	Form	Form	Form	Form	Form
		Schooling	Stated	Education	1	2	3	4	5	6	1	2	3	4	5	6	7	Stage	Stage	Stage
																		I	II	III
Total	5,643	53	44	3	6	18	13	108	60	326	182	674	418	937	2,041	524	164	5	3	64
15-19	785	3	1	1	-	1	-	3	1	3	5	20	75	184	382	87	19	-	-	-
20-24	777	4	3	-	-	1	-	1	1	3	8	30	41	131	394	111	45	1	-	3
25-29	728	4	2	-	-	1	-	-	1	9	16	25	44	119	364	86	40	-	1	16
30-34	627	5	-	1	-	1	1	1	1	10	6	29	37	110	318	77	23	1	-	6
35-39	530	2	2	-	-	-	1	5	1	11	4	42	36	121	218	65	10	-	-	12
40-44	424	2	3	1	-	-	1	2	2	11	6	49	33	110	139	42	11	1	1	10
45-49	360	-	2	-	-	1	-	5	4	18	13	63	32	72	110	27	8	1	-	4
50-54	357	-	1	-	1	1	2	5	2	26	22	106	59	49	63	11	1	1	-	7
55-59	344	1	3	-	-	1	3	13	7	50	34	127	34	24	32	10	3	-	-	2
60-64	246	5	7	-	1	1	2	11	9	55	22	89	14	6	15	4	2	-	1	2
>64	465	27	20	-	4	10	3	62	31	130	46	94	13	11	6	4	2	-	-	2

Table 2.7 : Resident Population Aged 15 Years and Over by Sex, Island and Highest Educational Qualification Gained

Sex: Both

Island & Region	Educational Qualification											No Qualification
	Total	Cook Island School Certificate	New Zealand School Certificate	Form 6 Certificate	University Entrance (NZ)	New Zealand Bursary Award	University Scholarship	Certificate	Diploma	Bachelors Degree	Masters Degree	Doctorate
COOK ISLANDS	11,567	1,318	1,810	512	270	161	28	57	33	156	16	7
RAROTONGA	6,938	806	1,371	433	237	144	23	48	22	148	14	6
SOUTHERN GROUP	3,207	379	337	65	25	9	3	4	9	6	2	-
Atitutaki	1,356	142	132	32	17	9	1	2	-	1	-	-
Mangaia	668	82	78	18	2	-	-	1	2	2	2	-
Atiu	602	71	72	10	3	-	1	1	4	2	-	-
Mauke	388	65	38	4	3	-	-	-	-	1	-	-
Mitiaro	193	19	17	1	-	-	1	-	3	-	-	-
NORTHERN GROUP	1,422	133	102	14	8	8	2	5	2	2	-	1
Palmerston	32	-	3	1	-	-	-	-	-	-	-	-
Pukapuka	436	51	11	3	3	-	-	-	-	-	-	-
Nassau	51	3	4	-	-	-	-	1	-	-	-	-
Manihiki	394	25	47	7	3	6	2	4	2	2	-	1
Rakahanga	159	7	11	-	-	-	-	-	-	-	-	-
Penthyne	347	47	26	3	1	2	-	-	-	-	-	-
Suvarrow	3	-	-	-	1	-	-	-	-	-	-	-
												2

Table 2.7 : Resident Population Aged 15 Years and Over by Sex, Island and Highest Educational Qualification Gained

Sex: Male

Island & Region	Educational Qualification											No Qualification
	Total	Cook Island School Certificate	New Zealand School Certificate	Form 6 Certificate	University Entrance (NZ)	New Zealand Bursary Award	University Scholarship	Certificate	Diploma	Bachelors Degree	Masters Degree	Doctorate
COOK ISLANDS	5,924	638	836	258	145	94	11	30	22	104	13	5
RAROTONGA	3,531	392	635	213	125	86	9	27	14	98	12	4
SOUTHERN GROUP	1,633	178	151	32	15	6	1	1	6	5	1	-
Aitutaki	683	65	58	15	11	6	1	-	-	-	-	-
Mangaia	337	39	37	11	1	-	-	-	1	2	1	-
Aitu	315	33	30	2	1	-	-	1	3	2	-	-
Mauke	199	33	21	3	2	-	-	-	-	1	-	-
Mitiaro	99	8	5	1	-	-	-	-	2	-	-	-
NORTHERN GROUP	760	68	50	13	5	2	1	2	2	1	-	1
Palmerston	17	-	2	1	-	-	-	-	-	-	-	-
Pukapuka	218	27	1	3	2	-	-	-	-	-	-	-
Nassau	25	1	2	-	-	-	-	-	-	-	-	-
Manihiki	227	14	22	6	2	2	1	2	2	1	-	1
Rakahanga	80	2	8	-	-	-	-	-	-	-	-	-
Penrhyn	191	24	15	3	1	-	-	-	-	-	-	-
Suvarrow	2	-	-	-	-	-	-	-	-	-	-	-

Table 2.8 : Resident Population Aged 15 Years and Over by Sex, Island, Age Groups and Highest Qualification Gained

Sex: Both

Educational Qualification	Total	15 - 19	20 - 24	25 - 29	30 - 34	35 - 39	40 - 44	45 - 49	50 - 54	55 - 59	60 - 64	>64
Total	11,567	1,646	1,563	1,455	1,333	1,075	817	768	713	703	545	949
Cook Island School Certificate	1,318	351	270	218	197	123	52	38	32	15	8	14
New Zealand School Certificate	1,810	209	356	357	288	227	126	102	73	46	19	7
Form 6 Certificate	512	77	116	102	77	42	35	30	12	8	5	8
New Zealand Bursary Awards A or B	161	15	28	30	31	19	10	9	9	3	5	2
University Entrance (NZ)	270	15	19	36	67	43	30	24	13	6	8	9
University Scholarship	28	4	7	7	1	-	2	3	-	3	-	1
Certificates	57	1	3	3	3	3	4	7	16	12	2	3
Diplomas	33	-	1	4	2	3	9	1	5	3	2	3
Bachelors Degrees (including honours)	156	-	6	28	22	33	13	15	12	12	5	10
Master Degrees	16	-	-	-	2	3	3	-	5	1	1	1
Doctorate	7	-	-	-	1	-	2	1	2	-	-	1
Not Stated	-	-	-	-	-	-	-	-	-	-	-	-
No Qualification	7,199	974	757	670	642	579	531	538	534	594	490	890

Table 2.8 : Resident Population Aged 15 Years and Over by Sex, Island, Age Groups and Highest Qualification Gained

Sex: Male

Educational Qualification	Total	15 - 19	20 - 24	25 - 29	30 - 34	35 - 39	40 - 44	45 - 49	50 - 54	55 - 59	60 - 64	>64
Total	5,924	861	786	727	706	545	393	408	356	359	299	484
Cook Island School Certificate	638	172	130	98	90	67	26	16	18	6	6	9
New Zealand School Certificate	836	103	142	156	139	106	62	52	31	27	13	5
Form 6 Certificate	258	32	53	54	46	21	14	15	9	5	2	7
New Zealand Bursary	94	7	16	16	20	11	4	5	7	3	4	1
University Entrance (NZ)	145	4	6	17	38	23	16	16	10	4	6	5
University Scholarship	11	1	2	2	1	-	-	2	-	2	-	1
Certificates	30	-	1	1	2	1	2	5	10	4	1	3
Diplomas	22	-	1	1	1	2	6	1	4	1	2	3
Bachelors Degree	104	-	4	12	16	22	7	12	8	11	3	9
Masters Degree	13	-	-	-	2	2	2	-	4	1	1	1
Doctorate	5	-	-	-	-	-	2	1	1	-	-	1
Not Stated	-	-	-	-	-	-	-	-	-	-	-	-
No Qualification	3,768	542	431	370	351	290	252	283	254	295	261	439

Table 2.8 : Resident Population Aged 15 Years and Over by Sex, Island, Age Groups and Highest Qualification Gained

Sex: Female

Educational Qualification	Total	15-19	20-24	25-29	30-34	35-39	40-44	45-49	50-54	55-59	60-64	>64
Total	5,643	785	777	728	627	530	424	360	357	344	246	465
Cook Island School Certificate	680	179	140	120	107	56	26	22	14	9	2	5
New Zealand School Certificate	974	106	214	201	149	121	64	50	42	19	6	2
Form 6 Certificate	254	45	63	48	31	21	21	15	3	3	3	1
New Zealand Bursary Award	67	8	12	14	11	8	6	4	2	-	1	1
University Entrance (NZ)	125	11	13	19	29	20	14	8	3	2	2	4
University Scholarship	17	3	5	5	-	-	2	1	-	1	-	-
Certificates	27	1	2	2	1	2	2	2	6	8	1	-
Diplomas	11	-	-	3	1	1	3	-	1	2	-	-
Bachelors Degree	52	-	2	16	6	11	6	3	4	1	2	1
Masters Degree	3	-	-	-	-	1	1	-	1	-	-	-
Doctrate	2	-	-	-	1	-	-	-	1	-	-	-
Not Stated	-	-	-	-	-	-	-	-	-	-	-	-
No Qualification	3,431	432	326	300	291	289	279	255	280	299	229	451

Table 2.9: Resident Population Aged 15 Years and Over by Island, Sex and Trade Vocational/ Professional Qualification Gained

Trade Vocational/Professional Qualification	Island													Penrhyn	Suvarrow
	Total	Rarotonga	Alitutaki	Mangaia	Aitu	Mauke	Mitiaro	Palmerston	Pukapuka	Nassau	Manihiki	Rakahanga			
Total	1,652	1,225	129	73	64	26	17	3	17	2	60	8	27	1	
	535	422	42	18	17	7	2	-	-	-	21	-	5	1	
	436	355	15	11	17	3	4	2	1	-	18	3	7	-	
	463	271	55	36	26	12	10	1	15	2	19	5	11	-	
	218	177	17	8	4	4	1	-	1	-	2	-	4	-	
Total	981	737	69	39	36	17	8	2	10	1	39	5	18	-	
	395	309	31	14	12	6	2	-	-	-	17	-	4	-	
	255	209	9	7	10	1	2	1	-	-	10	2	4	-	
	182	98	18	13	11	6	4	1	9	1	10	3	8	-	
	149	121	11	5	3	4	-	-	1	-	2	-	2	-	
Total	671	488	60	34	28	9	9	1	7	1	21	3	9	1	
	140	113	11	4	5	1	-	-	-	-	4	-	1	1	
	181	146	6	4	7	2	2	1	1	-	8	1	3	-	
	281	173	37	23	15	6	6	-	6	1	9	2	3	-	
	69	56	6	3	1	-	1	-	-	-	-	-	2	-	

Table 2.10 : Resident Population Aged 15 Years and Over by Sex, Age Groups and Trade, Vocational or Professional Qualification Gained

Island & Region	Total	Trade and Business Certificates	Professional and Higher Certificates	Teachers and Members of Professional Societies	Other Vocational Qualification
Total					
Total	1,652	535	436	463	218
15 - 19	5	3	2	-	-
20 - 24	91	29	26	24	12
25 - 29	196	73	51	43	29
30 - 34	243	96	84	32	31
35 - 39	221	89	54	39	39
40 - 44	175	61	46	42	26
45 - 49	192	62	54	45	31
50 - 54	207	47	40	102	18
55 - 59	144	38	29	65	12
60 - 64	86	21	25	33	7
>64	92	16	25	38	13
Male					
Total	981	395	255	182	149
15 - 19	3	2	1	-	-
20 - 24	46	18	12	9	7
25 - 29	101	48	30	7	16
30 - 34	154	70	55	8	21
35 - 39	138	63	31	16	28
40 - 44	100	47	17	16	20
45 - 49	117	45	35	13	24
50 - 54	121	41	28	41	11
55 - 59	80	28	12	30	10
60 - 64	56	18	17	17	4
>64	65	15	17	25	8
Female					
Total	671	140	181	281	69
15 - 19	2	1	1	-	-
20 - 24	45	11	14	15	5
25 - 29	95	25	21	36	13
30 - 34	89	26	29	24	10
35 - 39	83	26	23	23	11
40 - 44	75	14	29	26	6
45 - 49	75	17	19	32	7
50 - 54	86	6	12	61	7
55 - 59	64	10	17	35	2
60 - 64	30	3	8	16	3
>64	27	1	8	13	5

Table 3.1 : Resident Population Aged 15 Years and Over by Sex, Activity Status and Island

Activity Status	Island													
	Cook Islands	Rarotonga	Aitutaki	Mangaia	Atiu	Mauke	Mitiaro	Palmerston	Pukapuka	Nassau	Manihiki	Rakahanga	Penrhyn	Suvarrow
Total	11,567	6,938	1,356	668	602	388	193	32	436	51	394	159	347	3
Employer	362	243	34	11	10	3	2	-	5	-	25	1	28	-
Self Employed	307	257	22	7	5	-	1	-	-	-	14	-	1	-
Working Full Time	3,752	2,963	276	98	81	56	35	7	54	7	84	26	64	1
Working Part Time	589	484	50	11	19	6	2	1	2	-	10	-	4	-
Unpaid Family Worker	220	74	12	38	2	1	15	-	-	-	39	2	37	-
Home Duties	3,863	1,462	693	322	341	255	61	22	275	43	167	109	111	2
Student	770	495	99	45	49	38	15	1	12	-	4	-	12	-
Unemployed	764	383	71	77	43	2	34	-	63	-	25	10	56	-
Retired	822	520	77	51	44	21	24	1	20	-	22	11	31	-
Disabled	118	57	22	8	8	6	4	-	5	1	4	-	3	-

Table 3.1 : Resident Population Aged 15 Years and Over by Sex, Activity Status and Island

Activity Status	Island													
	Cook Islands	Rarotonga	Aitutaki	Mangaia	Atiu	Mauke	Mitaro	Palmerston	Pukapuka	Nassau	Manihiki	Rakahanga	Penryn	Suvarrow
Total	5,924	3,531	683	337	315	199	99	17	218	25	227	80	191	2
Employer	243	165	27	7	6	2	2	-	3	-	20	1	10	-
Self Employed	204	165	15	6	4	-	1	-	-	-	12	-	1	-
Working Full Time	2,141	1,656	151	52	46	40	22	5	42	4	59	18	46	-
Working Part Time	314	243	34	8	11	4	-	1	1	-	8	-	4	-
Unpaid Family Worker	170	52	9	35	2	1	13	-	-	-	31	2	25	-
Home Duties	1,306	376	286	109	154	112	7	10	93	21	59	44	33	2
Student	376	252	42	20	19	22	7	-	7	-	1	-	6	-
Unemployed	594	267	61	67	36	1	30	-	57	-	22	8	45	-
Retired	522	326	49	32	34	14	13	1	13	-	14	7	19	-
Disabled	54	29	9	1	3	3	4	-	2	-	1	-	2	-

Table 3.1 : Resident Population Aged 15 Years and Over by Sex, Activity Status and Island

Activity Status	Island													
	Cook Islands	Rarotonga	Aitutaki	Mangaia	Atiu	Mauke	Mitaro	Palmerston	Pukapuka	Nassau	Manihiki	Rakahanga	Penryhn	Suwarow
Total	5,643	3,407	673	331	287	189	94	15	218	26	167	79	156	1
Employer	119	78	7	4	4	1	-	-	2	-	5	-	18	-
Self Employed	103	92	7	1	1	-	-	-	-	-	2	-	-	-
Working Full Time	1,611	1,307	125	46	35	16	13	2	12	3	25	8	18	1
Working Part Time	275	241	16	3	8	2	2	-	1	-	2	-	-	-
Unpaid Family Worker	50	22	3	3	-	-	2	-	-	-	8	-	12	-
Home Duties	2,557	1,086	407	213	187	143	54	12	182	22	108	65	78	-
Student	394	243	57	25	30	16	8	1	5	-	3	-	6	-
Unemployed	170	116	10	10	7	1	4	-	6	-	3	2	11	-
Retired	300	194	28	19	10	7	11	-	7	-	8	4	12	-
Disabled	64	28	13	7	5	3	-	-	3	1	3	-	1	-

Table 3.2: Resident Population Aged 15 Years and Over by Sex, Age Groups and Activity Status

Age Group	Total	Employer Employed	Self Employed	Working Full Time	Working Part Time	Unpaid Family Worker	Home Duties	Student	Un - Employed	Retired	Disabled
Total											
Total	11,567	362	307	3,752	589	220	3,863	770	764	822	118
15 - 19	1,646	-	1	170	70	11	489	745	150	-	10
20 - 24	1,563	2	4	603	108	33	603	21	167	-	22
25 - 29	1,455	7	19	679	84	48	478	1	127	-	12
30 - 34	1,333	56	31	614	83	26	406	2	102	-	13
35 - 39	1,075	52	34	500	71	20	322	1	59	-	16
40 - 44	817	42	52	346	50	13	253	-	50	3	8
45 - 49	768	50	51	338	35	10	221	-	49	13	1
50 - 54	713	55	47	264	36	18	229	-	28	32	4
55 - 59	703	48	42	164	25	17	289	-	29	83	6
60 - 64	545	33	16	45	20	14	218	-	3	193	3
>64	949	17	10	29	7	10	355	-	-	498	23
Male											
Total	5,924	243	204	2,141	314	170	1,306	376	594	522	54
15 - 19	861	-	1	106	39	11	240	363	100	-	1
20 - 24	786	2	3	334	62	26	217	10	121	-	11
25 - 29	727	6	14	363	52	34	146	1	104	-	7
30 - 34	706	37	18	370	44	20	122	1	88	-	6
35 - 39	545	40	27	280	27	14	102	1	47	-	7
40 - 44	393	26	30	195	21	11	60	-	43	2	5
45 - 49	408	33	34	200	17	8	68	-	39	9	-
50 - 54	356	36	30	137	20	12	75	-	22	21	3
55 - 59	359	34	26	100	14	13	90	-	27	49	6
60 - 64	299	19	13	31	12	11	78	-	3	131	1
>64	484	10	8	25	6	10	108	-	-	310	7
Female											
Total	5,643	119	103	1,611	275	50	2,557	394	170	300	64
15 - 19	785	-	-	64	31	-	249	382	50	-	9
20 - 24	777	-	1	269	46	7	386	11	46	-	11
25 - 29	728	1	5	316	32	14	332	-	23	-	5
30 - 34	627	19	13	244	39	6	284	1	14	-	7
35 - 39	530	12	7	220	44	6	220	-	12	-	9
40 - 44	424	16	22	151	29	2	193	-	7	1	3
45 - 49	360	17	17	138	18	2	153	-	10	4	1
50 - 54	357	19	17	127	16	6	154	-	6	11	1
55 - 59	344	14	16	64	11	4	199	-	2	34	-
60 - 64	246	14	3	14	8	3	140	-	-	62	2
>64	465	7	2	4	1	-	247	-	-	188	16

Table 3.3 : Resident Population Aged 15 Years and Over by Sex, Island and Activity Status

Island & Region	Total	Economically Active			Not Economically Active
		Total	Employed	Un-Employed	
Total					
COOK ISLANDS	11,567	5,994	5,230	764	5,573
RAROTONGA	6,938	4,404	4,021	383	2,534
SOUTHERN GROUP	3,207	1,024	797	227	2,183
Aitutaki	1,356	465	394	71	891
Mangaia	668	242	165	77	426
Atiu	602	160	117	43	442
Mauke	388	68	66	2	320
Mitiaro	193	89	55	34	104
NORTHERN GROUP	1,422	566	412	154	856
Palmerston	32	8	8	-	24
Pukapuka	436	124	61	63	312
Nassau	51	7	7	-	44
Manihiki	394	197	172	25	197
Rakahanga	159	39	29	10	120
Penrhyn	347	190	134	56	157
Suvarrow	3	1	1	-	2
Male					
COOK ISLANDS	5,924	3,666	3,072	594	2,258
RAROTONGA	3,531	2,548	2,281	267	983
SOUTHERN GROUP	1,633	693	498	195	940
Aitutaki	683	297	236	61	386
Mangaia	337	175	108	67	162
Atiu	315	105	69	36	210
Mauke	199	48	47	1	151
Mitiaro	99	68	38	30	31
NORTHERN GROUP	760	425	293	132	335
Palmerston	17	6	6	-	11
Pukapuka	218	103	46	57	115
Nassau	25	4	4	-	21
Manihiki	227	152	130	22	75
Rakahanga	80	29	21	8	51
Penrhyn	191	131	86	45	60
Suvarrow	2	-	-	-	2
Female					
COOK ISLANDS	5,643	2,328	2,158	170	3,315
RAROTONGA	3,407	1,856	1,740	116	1,551
SOUTHERN GROUP	1,574	331	299	32	1,243
Aitutaki	673	168	158	10	505
Mangaia	331	67	57	10	264
Atiu	287	55	48	7	232
Mauke	189	20	19	1	169
Mitiaro	94	21	17	4	73
NORTHERN GROUP	662	141	119	22	521
Palmerston	15	2	2	-	13
Pukapuka	218	21	15	6	197
Nassau	26	3	3	-	23
Manihiki	167	45	42	3	122
Rakahanga	79	10	8	2	69
Penrhyn	156	59	48	11	97
Suvarrow	1	1	1	-	-

Table 3.4 : Employed Population by Sex, Principal Occupational Classification and Island

Principal Occupational Classification	Island													
	Cook Islands	Rarotonga	Aitutaki	Mangaia	Atiu	Mauke	Mitiaro	Palmerston	Pukapuka	Nassau	Manihiki	Rakahanga	Penrhyn	Suvarrow
Total	5,230	4,021	394	165	117	66	55	8	61	7	172	29	134	1
Legislators, Senior Officials & Managers	603	491	43	13	12	4	2	2	10	1	21	1	2	1
Professionals	736	489	69	42	31	24	12	3	22	3	16	10	15	-
Technicians & Associate Professionals	481	403	19	10	10	6	6	1	3	-	7	4	12	-
Clerks	639	557	29	9	6	8	5	-	6	-	9	2	8	-
Service Workers, Shop & Sales Workers	841	710	77	18	12	6	4	-	2	-	2	2	8	-
Skilled Agricultural & Fishery Workers	401	197	24	39	6	1	14	-	1	-	77	4	38	-
Craft & Related Trades Workers	525	402	39	14	18	5	3	-	3	1	6	2	32	-
Plant & Machine Operators & Assemblers	185	133	16	11	7	6	2	1	2	-	3	2	2	-
Elementary Occupations	814	634	78	9	15	6	7	1	12	2	31	2	17	-
Other Occupations	5	5	-	-	-	-	-	-	-	-	-	-	-	-

Table 3.4: Employed Population by Sex, Principal Occupational Classification and Island

Principal Occupational Classification	Island													
	Cook Islands	Rarotonga	Altutaki	Mangaia	Atiu	Mauke	Mitaro	Palmerston	Pukepuka	Nassau	Manihiki	Rakahanga	Penryn	Suvarrow
Total	3,072	2,281	236	108	69	47	38	6	46	4	130	21	86	-
Legislators, Senior Officials & Managers	407	322	31	13	8	3	1	1	8	1	17	1	1	-
Professionals	302	213	18	15	10	12	3	2	10	-	7	5	7	-
Technicians & Associate Professionals	339	275	16	8	9	5	5	1	3	-	4	2	11	-
Clerks	167	134	10	3	2	4	2	-	6	-	2	1	3	-
Service Workers, Shop & Sales Workers	333	277	32	3	2	5	2	-	2	-	1	2	7	-
Skilled Agricultural & Fishery Workers	357	167	24	39	4	1	14	-	1	-	67	4	36	-
Craft & Related Trades Workers	443	359	36	11	15	5	3	-	3	1	4	2	4	-
Plant & Machine Operators & Assemblers	152	103	16	8	7	6	2	1	2	-	3	2	2	-
Elementary Occupations	570	429	53	8	12	6	6	1	11	2	25	2	15	-
Other Occupations	2	2	-	-	-	-	-	-	-	-	-	-	-	-

Table 3.4 : Employed Population by Sex, Principal Occupational Classification and Island

Principal Occupational Classification	Island													
	Cook Islands	Rarotonga	Aitutaki	Mangaia	Atiu	Mauke	Mitaro	Palmerston	Pukapuka	Nassau	Manihiki	Rakahanga	Penrhyn	Suvarrow
Total	2,158	1,740	158	57	48	19	17	2	15	3	42	8	48	1
Legislators, Senior Officials & Managers	196	169	12	-	4	1	1	1	2	-	4	-	1	1
Professionals	434	276	51	27	21	12	9	1	12	3	9	5	8	-
Technicians & Associate Professionals	142	128	3	2	1	1	1	-	-	-	3	2	1	-
Clerks	472	423	19	6	4	4	3	-	-	-	7	1	5	-
Service Workers, Shop & Sales Workers	508	433	45	15	10	1	2	-	-	-	1	-	1	-
Skilled Agricultural & Fishery Workers	44	30	-	-	2	-	-	-	-	-	10	-	2	-
Craft & Related Trades Workers	82	43	3	3	3	-	-	-	-	-	2	-	28	-
Plant & Machine Operators & Assemblers	33	30	-	3	-	-	-	-	-	-	-	-	-	-
Elementary Occupations	244	205	25	1	3	-	1	-	1	-	6	-	2	-
Other Occupations	3	3	-	-	-	-	-	-	-	-	-	-	-	-

Table 3.5 : Employed Population by Principal Occupation and Age Groups

Principal Occupational Classification	Total	15 - 19	20 - 24	25 - 29	30 - 34	35 - 39	40 - 44	45 - 49	50 - 54	55 - 59	60 - 64	>64
Total	5,230	252	750	837	810	677	503	484	420	296	128	73
Legislators, Senior Officials & Managers	603	-	11	34	66	81	76	101	89	76	38	31
Professionals	736	9	62	104	91	106	82	104	111	38	20	9
Technicians & Associate Professionals	481	6	68	85	107	77	41	48	27	14	6	2
Clerks	639	26	118	146	111	88	64	38	27	16	5	-
Service Workers, Shop & Sales Workers	841	65	180	140	137	107	75	54	36	31	10	6
Skilled Agricultural & Fishery Workers	401	21	47	63	57	56	33	24	33	40	16	11
Craft & Related Trades Workers	525	27	84	116	83	51	49	41	33	24	13	4
Plant & Machine Operators & Assemblers	185	5	19	29	43	25	16	23	12	8	3	2
Elementary Occupations	819	93	161	120	115	86	67	51	52	49	17	8
Total	3,072	157	427	469	489	388	283	292	235	187	86	59
Legislators, Senior Officials & Managers	407	-	5	22	42	57	48	72	57	51	27	26
Professionals	302	6	21	30	43	49	32	48	38	14	13	8
Technicians & Associate Professionals	339	4	46	53	79	51	28	36	22	12	6	2
Clerks	167	4	37	37	21	19	18	11	10	9	1	-
Service Workers, Shop & Sales Workers	333	28	67	58	63	36	27	25	13	11	3	2
Skilled Agricultural & Fishery Workers	357	20	40	55	50	51	31	21	26	39	14	10
Craft & Related Trades Workers	443	24	77	101	75	44	41	34	25	14	6	2
Plant & Machine Operators & Assemblers	152	5	18	27	33	21	13	16	9	5	3	2
Elementary Occupations	572	66	116	86	83	60	45	29	35	32	13	7
Total	2,158	95	323	368	321	289	220	192	185	109	42	14
Legislators, Senior Officials & Managers	196	-	6	12	24	24	28	29	32	25	11	5
Professionals	434	3	41	74	48	57	50	56	73	24	7	1
Technicians & Associate Professionals	142	2	22	32	28	26	13	12	5	2	-	-
Clerks	472	22	81	109	90	69	46	27	17	7	4	4
Service Workers, Shop & Sales Workers	508	37	113	82	74	71	48	29	23	20	7	2
Skilled Agricultural & Fishery Workers	44	1	7	8	7	5	2	3	7	1	2	1
Craft & Related Trades Workers	82	3	7	15	8	7	8	7	8	10	7	2
Plant & Machine Operators & Assemblers	33	-	1	2	10	4	3	7	3	3	-	-
Elementary Occupations	247	27	45	34	32	26	22	22	17	17	4	1

Table 3.6 : Employed Population by Sex, Island and Principal Employer

Island & Region	Total	Public Service	Private Enterprise	Ad-hoc Organisation	Overseas Organisation	Religious Organisation	Self - Employed
Total							
COOK ISLANDS	5,230	1,559	2,992	309	20	83	267
RAROTONGA	4,021	1,024	2,530	279	20	55	113
SOUTHERN GROUP	797	341	340	21	-	19	76
Aitutaki	394	124	236	11	-	6	17
Mangaia	165	80	39	2	-	4	40
Atiu	117	57	46	4	-	2	8
Mauke	66	47	9	3	-	6	1
Mitiaro	55	33	10	1	-	1	10
NORTHERN GROUP	412	194	122	9	-	9	78
Palmerston	8	7	-	-	-	1	-
Pukapuka	61	52	7	1	-	1	-
Nassau	7	7	-	-	-	-	-
Manihiki	172	47	96	4	-	2	23
Rakahanga	29	22	2	3	-	1	1
Penrhyn	134	58	17	1	-	4	54
Suvarrow	1	1	-	-	-	-	-
Male							
COOK ISLANDS	3,072	905	1,656	219	10	65	217
RAROTONGA	2,281	571	1,367	196	10	42	95
SOUTHERN GROUP	498	199	198	15	-	14	72
Aitutaki	236	67	141	8	-	3	17
Mangaia	108	47	20	-	-	4	37
Atiu	69	32	24	4	-	2	7
Mauke	47	33	6	3	-	4	1
Mitiaro	38	20	7	-	-	1	10
NORTHERN GROUP	293	135	91	8	-	9	50
Palmerston	6	5	-	-	-	1	-
Pukapuka	46	40	4	1	-	1	-
Nassau	4	4	-	-	-	-	-
Manihiki	130	32	75	3	-	2	18
Rakahanga	21	14	2	3	-	1	1
Penrhyn	86	40	10	1	-	4	31
Suvarrow	-	-	-	-	-	-	-
Female							
COOK ISLANDS	2,158	654	1,336	90	10	18	50
RAROTONGA	1,740	453	1,163	83	10	13	18
SOUTHERN GROUP	299	142	142	6	-	5	4
Aitutaki	158	57	95	3	-	3	-
Mangaia	57	33	19	2	-	-	3
Atiu	48	25	22	-	-	-	1
Mauke	19	14	3	-	-	2	-
Mitiaro	17	13	3	1	-	-	-
NORTHERN GROUP	119	59	31	1	-	-	28
Palmerston	2	2	-	-	-	-	-
Pukapuka	15	12	3	-	-	-	-
Nassau	3	3	-	-	-	-	-
Manihiki	42	15	21	1	-	-	5
Rakahanga	8	8	-	-	-	-	-
Penrhyn	48	18	7	-	-	-	23
Suvarrow	1	1	-	-	-	-	-

Table 3.7 : Employed Population by Sex, Age Groups and Principal Employer

Age Group	Total	Public Service	Private Enterprise	Ad-hoc Organisation	Overseas Organisation	Religious Organisation	Self-Employed
Total							
Total	5,230	1,559	2,992	309	20	83	267
15 - 19	252	25	221	5	-	1	-
20 - 24	750	155	523	47	3	4	18
25 - 29	837	252	492	53	4	2	34
30 - 34	810	251	447	63	-	12	37
35 - 39	677	208	393	34	4	12	26
40 - 44	503	158	268	33	3	15	26
45 - 49	484	185	223	34	3	16	23
50 - 54	420	178	181	22	2	7	30
55 - 59	296	110	136	12	-	2	36
60 - 64	128	21	70	4	1	7	25
> 64	73	16	38	2	-	5	12
Male							
Total	3,072	905	1,656	219	10	65	217
15 - 19	157	16	137	3	-	1	-
20 - 24	427	86	289	34	-	1	17
25 - 29	469	131	274	32	2	2	28
30 - 34	489	162	239	45	-	11	32
35 - 39	388	110	218	24	2	12	22
40 - 44	283	90	136	24	2	11	20
45 - 49	292	109	127	22	1	15	18
50 - 54	235	92	96	20	2	3	22
55 - 59	187	77	71	9	-	1	29
60 - 64	86	17	42	4	1	3	19
> 64	59	15	27	2	-	5	10
Female							
Total	2,158	654	1,336	90	10	18	50
15 - 19	95	9	84	2	-	-	-
20 - 24	323	69	234	13	3	3	1
25 - 29	368	121	218	21	2	-	6
30 - 34	321	89	208	18	-	1	5
35 - 39	289	98	175	10	2	-	4
40 - 44	220	68	132	9	1	4	6
45 - 49	192	76	96	12	2	1	5
50 - 54	185	86	85	2	-	4	8
55 - 59	109	33	65	3	-	1	7
60 - 64	42	4	28	-	-	4	6
> 64	14	1	11	-	-	-	2

Table 3.8 : Employed Population by Sex, Principal Industrial Classification and Island

Principal Industrial Classification	Cook Islands	Rarotonga	Aitutaki	Mangaia	Atiu	Mauke	Miliaro	Palmerston	Pukapuka	Nassau	Maritiki	Rakahanga	Penrhyn	Suvarrow
Total	5,230	4,021	394	165	117	66	55	8	61	7	172	29	134	1
Agricultural & Fishing	553	272	32	43	15	3	16	1	2	1	110	5	53	-
Mining & Quarrying & Manufacturing	305	239	13	4	14	2	1	-	-	-	4	-	28	-
Electricity & Water	120	85	12	6	2	3	-	1	4	1	1	1	4	-
Construction	158	143	3	2	-	2	2	-	-	-	-	-	6	-
Trade, Restaurants & Accommodation	1,468	1,228	166	25	19	4	3	-	5	-	9	1	8	-
Transport & Communication	497	438	30	4	5	4	3	-	3	-	4	3	3	-
Finance, Property & Business Services	274	257	7	4	-	2	-	-	1	-	1	-	2	-
Community, Social & Personal Services	1,855	1,359	131	77	62	46	30	6	46	5	43	19	30	1
Total	3,072	2,281	236	108	69	47	38	6	46	4	130	21	86	-
Agricultural & Fishing	474	220	32	42	13	3	15	1	2	1	91	5	49	-
Mining & Quarrying & Manufacturing	183	156	12	2	9	2	1	-	-	-	1	-	-	-
Electricity & Water	107	74	11	6	2	3	-	1	4	1	1	1	3	-
Construction	152	137	3	2	-	2	2	-	-	-	-	-	6	-
Trade, Restaurants & Accommodation	630	517	78	9	6	3	1	-	3	-	5	1	7	-
Transport & Communication	362	312	27	3	4	3	2	-	3	-	3	3	2	-
Finance, Property & Business Services	138	130	4	1	-	1	-	-	-	-	1	-	1	-
Community, Social & Personal Services	1,026	735	69	43	35	30	17	4	34	2	28	11	18	-
Total	2,158	1,740	158	57	48	19	17	2	15	3	42	8	48	1
Agricultural & Fishing	79	52	-	1	2	-	1	-	-	-	19	-	4	-
Mining & Quarrying & Manufacturing	122	83	1	2	5	-	-	-	-	-	3	-	28	-
Electricity & Water	13	11	1	-	-	-	-	-	-	-	-	-	1	-
Construction	6	6	-	-	-	-	-	-	-	-	-	-	-	-
Trade, Restaurants & Accommodation	838	711	88	16	13	1	2	-	2	-	4	-	1	-
Transport & Communication	135	126	3	1	1	1	1	-	-	-	1	-	1	-
Finance, Property & Business Services	136	127	3	3	-	1	-	-	1	-	-	-	1	-
Community, Social & Personal Services	829	624	62	34	27	16	13	2	12	3	15	8	12	1

Table 3.9 : Employed Population by Sex, Industrial Classification and Age Groups

Industrial Classification	Total	15 - 19	20 - 24	25 - 29	30 - 34	35 - 39	40 - 44	45 - 49	50 - 54	55 - 59	60 - 64	>64
Total	5,230	252	750	837	810	677	503	484	420	296	128	73
Agricultural & Fishing	553	38	71	88	79	68	43	50	38	45	20	13
Mining & Quarrying & Manufacturing	305	17	43	62	49	31	21	23	24	17	11	7
Electricity & Water	120	3	14	25	26	11	12	14	5	6	2	2
Construction	158	7	21	26	31	26	15	16	6	5	5	-
Trade, Restaurants & Accommodation	1,468	104	271	215	216	171	131	110	98	90	41	21
Transport & Communication	497	14	84	73	95	69	43	47	38	18	11	5
Business & Finance	274	10	42	61	47	44	25	20	17	4	2	2
Community, Social & Personal Services	1,855	59	204	287	267	257	213	204	194	111	36	23
Total	3,072	157	427	469	489	388	283	292	235	187	86	59
Agricultural & Fishing	474	33	61	73	68	58	37	43	31	41	17	12
Mining & Quarrying & Manufacturing	183	14	34	42	25	13	11	15	13	7	4	5
Electricity & Water	107	2	13	21	24	8	11	13	5	6	2	2
Construction	152	7	21	26	28	26	14	14	6	5	5	-
Trade, Restaurants & Accommodation	630	52	117	94	88	65	47	45	45	41	22	14
Transport & Communication	362	9	64	50	67	52	31	32	30	12	10	5
Business & Finance	138	4	17	30	21	25	11	15	12	1	2	-
Community, Social & Personal Services	1,026	36	100	133	168	141	121	115	93	74	24	21
Total	2,158	95	323	368	321	289	220	192	185	109	42	14
Agricultural & Fishing	79	5	10	15	11	10	6	7	7	4	3	1
Mining & Quarrying & Manufacturing	122	3	9	20	24	18	10	8	11	10	7	2
Electricity & Water	13	1	1	4	2	3	1	1	-	-	-	-
Construction	6	-	-	-	3	-	1	2	-	-	-	-
Trade, Restaurants & Accommodation	838	52	154	121	128	106	84	65	53	49	19	7
Transport & Communication	135	5	20	23	28	17	12	15	8	6	1	-
Business & Finance	136	6	25	31	26	19	14	5	5	3	-	2
Community, Social & Personal Services	829	23	104	154	99	116	92	89	101	37	12	2

Table 3.10 : Resident Population Aged 15 Years and Over by Sex, Island and Engaged in Home Duties

Island & Region	Looking After Children	Housework	Handicraft Making	Tending Livestock	Tending Garden	Subsistence Fishing	Catering	Sewing
Total								
COOK ISLANDS	4,981	8,293	2,037	5,085	5,791	4,435	756	2,110
RAROTONGA	2,925	5,074	619	2,666	3,451	2,061	339	909
SOUTHERN GROUP	1,439	2,108	819	1,787	1,842	1,676	206	830
Aitutaki	703	913	230	619	679	636	80	338
Mangaia	278	413	251	415	422	433	96	197
Atiu	244	396	155	396	422	272	24	178
Mauke	151	286	116	266	234	241	3	79
Mitiaro	63	100	67	91	85	94	3	38
NORTHERN GROUP	617	1,111	599	632	498	698	211	371
Palmerston	17	31	21	20	22	25	8	16
Pukapuka	190	365	233	154	170	189	95	158
Nassau	33	51	50	46	31	28	30	20
Manihiki	154	260	98	174	133	195	18	84
Rakahanga	68	122	69	71	55	70	56	43
Penrhyn	153	279	128	166	85	189	4	49
Suvarrow	2	3	-	1	2	2	-	1
Male								
COOK ISLANDS	1,417	3,004	381	3,787	3,248	3,517	201	54
RAROTONGA	924	1,886	142	1,938	1,903	1,602	99	32
SOUTHERN GROUP	342	610	102	1,320	1,102	1,285	56	16
Aitutaki	193	278	47	476	391	505	25	9
Mangaia	54	95	8	309	280	292	24	3
Atiu	51	116	36	281	230	229	6	2
Mauke	37	101	3	172	160	172	-	2
Mitiaro	7	20	8	82	41	87	1	-
NORTHERN GROUP	161	508	137	529	243	630	46	6
Palmerston	7	16	8	14	11	16	3	2
Pukapuka	43	180	81	143	40	188	25	-
Nassau	15	25	24	24	12	21	12	-
Manihiki	43	112	8	127	78	155	3	2
Rakahanga	11	46	4	65	49	70	2	1
Penrhyn	30	127	12	155	51	178	1	-
Suvarrow	2	2	-	1	2	2	-	1
Female								
COOK ISLANDS	3,564	5,289	1,656	1,298	2,543	918	555	2,056
RAROTONGA	2,001	3,188	477	728	1,548	459	240	877
SOUTHERN GROUP	1,097	1,498	717	467	740	391	150	814
Aitutaki	510	635	183	143	288	131	55	329
Mangaia	224	318	243	106	142	141	72	194
Atiu	193	280	119	115	192	43	18	176
Mauke	114	185	113	94	74	69	3	77
Mitiaro	56	80	59	9	44	7	2	38
NORTHERN GROUP	466	603	462	103	255	68	165	365
Palmerston	10	15	13	6	11	9	5	14
Pukapuka	147	185	152	11	130	1	70	158
Nassau	18	26	26	22	19	7	18	20
Manihiki	111	148	90	47	55	40	15	82
Rakahanga	57	76	65	6	6	-	54	42
Penrhyn	123	152	116	11	34	11	3	49
Suvarrow	-	1	-	-	-	-	-	-

Table 3.11 : Resident Population Aged 15 Years and Over by Sex, Age Groups and Engaged in Home Duties

Age Group	Looking After Children	Housework	Handicraft Making	Tendering Livestock	Tending Garden	Subsistence Fishing	Catering	Sewing
Total								
Total	4,981	8,293	2,037	5,085	5,791	4,435	756	2,110
15 - 19	467	1,183	204	761	781	622	75	183
20 - 24	673	1,116	238	667	693	631	96	225
25 - 29	711	1,030	221	640	682	628	82	243
30 - 34	714	960	247	589	642	570	91	222
35 - 39	548	776	211	476	545	453	94	218
40 - 44	421	603	155	356	453	324	64	181
45 - 49	328	534	118	339	427	297	49	153
50 - 54	288	518	131	335	419	294	59	184
55 - 59	289	495	170	336	431	245	67	196
60 - 64	211	381	129	250	310	175	34	125
> 64	331	697	213	336	408	196	45	180
Male								
Total	1,417	3,004	381	3,787	3,248	3,517	201	54
15 - 19	95	446	48	576	475	510	21	8
20 - 24	163	390	47	517	415	514	27	6
25 - 29	202	347	42	468	367	486	20	7
30 - 34	234	372	54	434	356	446	31	7
35 - 39	166	278	44	331	284	354	28	3
40 - 44	121	198	25	253	229	244	11	7
45 - 49	96	197	13	252	236	231	10	2
50 - 54	84	180	24	240	219	227	14	9
55 - 59	71	165	29	244	233	194	20	1
60 - 64	73	151	21	199	186	140	9	2
> 64	112	280	34	273	248	171	10	2
Female								
Total	3,564	5,289	1,656	1,298	2,543	918	555	2,056
15 - 19	372	737	156	185	306	112	54	175
20 - 24	510	726	191	150	278	117	69	219
25 - 29	509	683	179	172	315	142	62	236
30 - 34	480	588	193	155	286	124	60	215
35 - 39	382	498	167	145	261	99	66	215
40 - 44	300	405	130	103	224	80	53	174
45 - 49	232	337	105	87	191	66	39	151
50 - 54	204	338	107	95	200	67	45	175
55 - 59	218	330	141	92	198	51	47	195
60 - 64	138	230	108	51	124	35	25	123
> 64	219	417	179	63	160	25	35	178

Table 3.12 : Resident Population Aged 15 Years and Over by Sex, Island and Income

Island & Region	Total	Less Than \$5,000	\$5,000 - \$9,999	\$10,000 - \$14,999	\$15,000 - \$19,999	\$20,000 - \$29,999	\$30,000 - \$39,999	\$40,000 - \$49,999	> \$49,999
Total									
COOK ISLANDS	11,567	4,348	1,946	947	542	446	157	72	112
RAROTONGA	6,938	2,297	1,382	782	455	404	149	69	102
SOUTHERN GROUP	3,207	1,417	385	99	61	31	7	3	2
Aitutaki	1,356	593	178	51	17	16	7	2	2
Mangaia	868	314	67	16	11	6	-	-	-
Atiu	602	278	65	20	18	4	-	-	-
Mauke	388	149	44	8	10	3	-	1	-
Mitiaro	193	83	31	4	5	2	-	-	-
NORTHERN GROUP	1,422	634	179	66	26	11	1	-	8
Palmerston	32	18	1	-	1	-	-	-	-
Pukapuka	436	189	37	18	5	3	-	-	-
Nassau	51	22	3	3	-	-	-	-	-
Manihiki	394	192	71	21	13	3	1	-	8
Rakahanga	159	58	14	9	3	-	-	-	-
Penrhyn	347	155	53	14	4	5	-	-	-
Suvarrow	3	-	-	1	-	-	-	-	-
Male									
COOK ISLANDS	5,924	1,699	1,142	511	290	262	115	55	95
RAROTONGA	3,531	961	785	418	231	234	109	52	86
SOUTHERN GROUP	1,633	514	222	50	42	19	6	3	2
Aitutaki	683	219	100	25	10	12	6	2	2
Mangaia	337	110	36	6	9	4	-	-	-
Atiu	315	113	38	12	10	2	-	-	-
Mauke	199	44	29	5	9	1	-	1	-
Mitiaro	99	28	19	2	4	-	-	-	-
NORTHERN GROUP	760	224	135	43	17	9	-	-	7
Palmerston	17	9	1	-	-	-	-	-	-
Pukapuka	218	47	31	12	3	2	-	-	-
Nassau	25	6	2	2	-	-	-	-	-
Manihiki	227	87	50	15	10	3	-	-	7
Rakahanga	80	15	11	5	2	-	-	-	-
Penrhyn	191	60	40	9	2	4	-	-	-
Suvarrow	2	-	-	-	-	-	-	-	-
Female									
COOK ISLANDS	5,643	2,649	804	436	252	184	42	17	17
RAROTONGA	3,407	1,336	597	364	224	170	40	17	16
SOUTHERN GROUP	1,574	903	163	49	19	12	1	-	-
Aitutaki	673	374	78	26	7	4	1	-	-
Mangaia	331	204	31	10	2	2	-	-	-
Atiu	287	165	27	8	8	2	-	-	-
Mauke	189	105	15	3	1	2	-	-	-
Mitiaro	94	55	12	2	1	2	-	-	-
NORTHERN GROUP	662	410	44	23	9	2	1	-	1
Palmerston	15	9	-	-	1	-	-	-	-
Pukapuka	218	142	6	6	2	1	-	-	-
Nassau	26	16	1	1	-	-	-	-	-
Manihiki	167	105	21	6	3	-	1	-	1
Rakahanga	79	43	3	4	1	-	-	-	-
Penrhyn	156	95	13	5	2	1	-	-	-
Suvarrow	1	-	-	1	-	-	-	-	-

Table 3.13: Resident Population Aged 15 Years and Over by Sex, Age Groups and Source of Welfare Benefits

Age Group	Child Benefit	Old Age Pension	Destitute/ Infirm	Superannuation	War Pension
Total					
Total	2,478	1,391	234	312	7
15 - 19	94	-	15	-	-
20 - 24	409	-	33	-	-
25 - 29	527	-	25	13	-
30 - 34	501	-	37	12	-
35 - 39	360	-	30	3	-
40 - 44	232	-	16	10	-
45 - 49	142	-	11	6	-
50 - 54	93	-	26	31	-
55 - 59	72	5	24	61	-
60 - 64	25	489	8	72	-
>64	23	897	9	104	7
Male					
Total	266	726	104	182	5
15 - 19	1	-	4	-	-
20 - 24	24	-	17	-	-
25 - 29	54	-	11	7	-
30 - 34	63	-	20	5	-
35 - 39	45	-	13	2	-
40 - 44	35	-	6	2	-
45 - 49	22	-	4	2	-
50 - 54	10	-	12	20	-
55 - 59	12	5	12	33	-
60 - 64	-	266	3	50	-
>64	-	455	2	61	5
Female					
Total	2,212	665	130	130	2
15 - 19	93	-	11	-	-
20 - 24	385	-	16	-	-
25 - 29	473	-	14	6	-
30 - 34	438	-	17	7	-
35 - 39	315	-	17	1	-
40 - 44	197	-	10	8	-
45 - 49	120	-	7	4	-
50 - 54	83	-	14	11	-
55 - 59	60	-	12	28	-
60 - 64	25	223	5	22	-
>64	23	442	7	43	2

Table 3.14 : Resident Population Aged 15 Years and Over by Sex, Island and Land Tenure

Island & Region	Have Rights or will Succeed			No Rights and will not Succeed			Legal Succession			No Legal Succession			Other Rights		
	Total	Male	Female	Total	Male	Female	Total	Male	Female	Total	Male	Female	Total	Male	Female
COOK ISLANDS	8,602	4,397	4,205	2,965	1,527	1,438	4,192	2,157	2,035	4,412	1,930	2,170	214	112	102
RAROTONGA	5,201	2,636	2,565	1,737	895	842	2,899	1,480	1,419	2,302	1,156	1,146	173	90	83
SOUTHERN GROUP	2,396	1,225	1,171	811	408	403	891	451	440	1,505	774	731	34	15	19
Aitutaki	907	453	454	449	230	219	572	287	285	335	166	169	15	6	9
Mangaia	523	265	258	145	72	73	19	8	11	504	257	247	3	1	2
Atiu	432	233	199	170	82	88	118	62	56	314	171	143	13	7	6
Mauke	350	181	169	38	18	20	178	92	86	172	89	83	2	1	1
Mitiaro	184	93	91	9	6	3	4	2	2	180	91	89	1	-	1
NORTHERN GROUP	1,005	536	469	417	224	193	402	226	176	605	-	293	7	7	-
Palmerston	32	17	15	-	-	-	1	1	-	31	16	15	1	1	-
Pukapuka	385	190	195	51	28	23	6	4	2	379	186	193	-	-	-
Nassau	-	-	-	51	25	26	108	108	-	64	64	-	-	-	-
Manihiki	301	172	129	93	55	38	89	3	86	74	31	43	6	6	-
Rakahanga	71	34	37	88	46	42	110	108	2	48	13	35	-	-	-
Penrhyn	213	121	92	134	70	64	86	1	85	8	1	7	-	-	-
Suvarrow	3	2	1	-	-	-	2	1	1	1	1	-	-	-	-

Table 3.15 : Resident Population Aged 15 Years and Over by Sex, Island, Sole Occupation Right and Purpose of Sole Occupation Right

Island & Region	Total						Male						Female					
	Total Sole Occupation Right	House Site	Agricultural	House Site & Agricultural	Other	Total Sole Occupation Right	House Site	Agricultural	House Site & Agricultural	Other	Total Sole Occupation Right	House Site	Agricultural	House Site & Agricultural	Other	Total Sole Occupation Right	House Site	Agricultural
COOK ISLANDS	1,733	1,084	30	591	28	910	543	19	333	15	823	541	11	258	13			
RAROTONGA	1,150	812	14	307	17	598	404	9	175	10	552	408	5	132	7			
SOUTHERN GROUP	298	218	16	55	9	153	111	10	28	4	145	107	6	27	5			
Aitutaki	217	172	7	32	6	111	89	3	17	2	106	83	4	15	4			
Mangaia	7	2	-	4	1	4	-	-	3	1	3	2	-	1	-			
Ai'u	63	37	8	16	2	34	19	7	7	1	29	18	1	9	1			
Mauke	11	7	1	3	-	4	3	-	1	-	7	4	1	2	-			
Mitiaro	-	-	-	-	-	-	-	-	-	-	-	-	-	-	-			
NORTHERN GROUP	285	54	-	229	2	159	28	-	130	1	126	26	-	99	1			
Palmerston	-	-	-	-	-	-	-	-	-	-	-	-	-	-	-			
Pukapuka	6	4	-	1	1	4	4	-	-	-	2	-	-	1	1			
Nassau	-	-	-	-	-	-	-	-	-	-	-	-	-	-	-			
Manihiki	89	47	-	41	1	50	22	-	27	1	39	25	-	14	-			
Rakahanga	-	-	-	-	-	-	-	-	-	-	-	-	-	-	-			
Penthyne	189	2	-	187	-	104	1	-	103	-	85	1	-	84	-			
Suvarrow	1	1	-	-	-	1	1	-	-	-	-	-	-	-	-			

Table 3.16 : Resident Population Aged 15 Years and Over by Sex, Island, Joint Occupation Right and Purpose of Joint Occupation Right

Island & Region	Total					Male					Female				
	Total Joint Occupation Right	House Site	Agricultural	House Site & Agricultural	Other	Total Joint Occupation Right	House Site	Agricultural	House Site & Agricultural	Other	Total Joint Occupation Right	House Site	Agricultural	House Site & Agricultural	Other
COOK ISLANDS	688	454	9	211	14	340	221	4	108	7	348	233	5	103	7
RAROTONGA	508	332	6	163	7	248	159	3	82	4	260	173	3	81	3
SOUTHERN GROUP	156	109	3	37	7	78	55	1	19	3	78	54	2	18	4
Aitutaki	119	90	-	22	7	59	44	-	12	3	60	46	-	10	4
Mangaia	1	1	-	-	-	1	1	-	-	-	-	-	-	-	-
Aitu	32	16	1	15	-	16	9	-	7	-	16	7	1	8	-
Mauke	1	1	-	-	-	1	1	-	-	-	-	-	-	-	-
Mitiaro	3	1	2	-	-	1	-	1	-	-	2	1	1	-	-
NORTHERN GROUP	24	13	-	11	-	14	7	-	7	-	10	6	-	4	-
Palmerston	-	-	-	-	-	-	-	-	-	-	-	-	-	-	-
Pukapuka	-	-	-	-	-	-	-	-	-	-	-	-	-	-	-
Nassau	-	-	-	-	-	-	-	-	-	-	-	-	-	-	-
Manihiki	21	11	-	10	-	12	6	-	6	-	9	5	-	4	-
Rakahanga	2	2	-	-	-	1	1	-	-	-	1	1	-	-	-
Penrhyn	1	-	-	1	-	1	-	-	1	-	-	-	-	-	-
Suvarrow	-	-	-	-	-	-	-	-	-	-	-	-	-	-	-

Table 3.17 : Resident Population Aged 15 Years and Over by Sex, Island, Leasehold / Sub-leasehold and Purpose of Leasehold/Sub-leasehold Right

Island & Region	Total					Male					Female				
	Total Leasehold /Sub-leasehold	House	Agricultural	House Site & Agricultural	Other	Total Leasehold /Sub-leasehold	House	Agricultural	House Site & Agricultural	Other	Total Leasehold /Sub-leasehold	House	Agricultural	House Site & Agricultural	Other
COOK ISLANDS	482	396	4	63	19	239	191	2	35	11	243	205	2	28	8
RAROTONGA	464	384	4	60	16	228	185	2	33	8	236	199	2	27	8
SOUTHERN GROUP	14	8	-	3	3	9	4	-	2	3	5	4	-	1	-
Aitutaki	12	7	-	2	3	8	4	-	1	3	4	3	-	1	-
Mangaia	1	1	-	-	-	-	-	-	-	-	1	1	-	-	-
Atiu	1	-	-	1	-	1	-	-	1	-	-	-	-	-	-
Mauke	-	-	-	-	-	-	-	-	-	-	-	-	-	-	-
Mitiaro	-	-	-	-	-	-	-	-	-	-	-	-	-	-	-
NORTHERN GROUP	4	4	-	-	-	2	2	-	-	-	2	2	-	-	-
Palmerston	-	-	-	-	-	-	-	-	-	-	-	-	-	-	-
Pukapuka	-	-	-	-	-	-	-	-	-	-	-	-	-	-	-
Nassau	-	-	-	-	-	-	-	-	-	-	-	-	-	-	-
Manihiki	-	-	-	-	-	-	-	-	-	-	-	-	-	-	-
Rakahanga	3	3	-	-	-	2	2	-	-	-	1	1	-	-	-
Penrhyn	-	-	-	-	-	-	-	-	-	-	-	-	-	-	-
Suvarrow	1	1	-	-	-	-	-	-	-	-	1	1	-	-	-

Table 4.1: Occupied Dwellings by Island, Type of Dwelling and Number of Persons by Sex

Island & Region	Total Dwellings				Private Dwellings				Non-Private Dwellings				
	Total Dwellings	Males	Females	Total Persons	Total Dwellings	Males	Females	Total Persons	Average Dwelling Size	Total Dwellings	Males	Females	Total Persons
COOK ISLANDS	4,198	9,842	9,261	19,103	4,153	9,443	8,901	18,344	4	45	399	360	759
RAROTONGA	2,601	5,730	5,495	11,225	2,569	5,378	5,180	10,558	4	32	352	315	667
SOUTHERN GROUP	1,140	2,794	2,630	5,424	1,127	2,747	2,585	5,332	5	13	47	45	92
Aitutaki	507	1,216	1,173	2,389	496	1,172	1,131	2,303	5	11	44	42	86
Mangaia	237	567	541	1,108	237	567	541	1,108	5	-	-	-	-
Aiū	198	492	464	956	197	490	462	952	5	1	2	2	4
Mauke	134	342	310	652	133	341	309	650	5	1	1	1	2
Mitiaro	64	177	142	319	64	177	142	319	5	-	-	-	-
NORTHERN GROUP	457	1,318	1,136	2,454	457	1,318	1,136	2,454	5	-	-	-	-
Palmerston	11	25	24	49	11	25	24	49	4	-	-	-	-
Pukapuka	120	405	374	779	120	405	374	779	6	-	-	-	-
Nassau	21	54	45	99	21	54	45	99	5	-	-	-	-
Manihiki	149	373	295	668	149	373	295	668	4	-	-	-	-
Rakahanga	42	135	114	249	42	135	114	249	6	-	-	-	-
Penthyne	113	323	283	606	113	323	283	606	5	-	-	-	-
Suvarrow	1	3	1	4	1	3	1	4	4	-	-	-	-

Table 4.2: Private Occupied Dwellings by Island and Number of Persons in Household

Island & Region	Total	1	2	3	4	5	6	7	8	9	10	11	>11
COOK ISLANDS	4,153	492	657	638	637	572	372	281	172	115	80	39	98
RAROTONGA	2,569	329	463	426	414	338	210	156	83	48	40	18	44
SOUTHERN GROUP	1,127	117	155	154	166	165	116	76	62	46	27	13	30
Aitutaki	496	40	72	72	74	79	61	30	28	19	11	2	8
Mangaia	237	29	31	34	37	40	14	16	6	12	6	4	8
Atiu	197	20	31	23	30	21	20	17	15	6	6	2	6
Mauke	133	19	15	13	23	18	11	8	8	6	3	3	6
Mitiaro	64	9	6	12	2	7	10	5	5	3	1	2	2
NORTHERN GROUP	457	46	39	58	57	69	46	49	27	21	13	8	24
Palmerston	11	3	1	2	1	-	1	1	-	-	1	1	-
Pukapuka	120	7	6	15	8	17	12	18	10	7	4	3	13
Nassau	21	2	4	1	4	3	2	1	1	2	1	-	-
Manihiki	149	19	17	26	23	20	12	15	5	4	3	2	3
Rakahanga	42	1	5	2	3	12	2	3	7	4	1	1	1
Penrhyn	113	14	6	12	17	17	17	11	4	4	3	1	7
Suvarrow	1	-	-	-	1	-	-	-	-	-	-	-	-

Table 4.3 : Resident Population by Sex, Island and Relationship to Head of Household

Sex : Both

Island & Region	Total	Head	Spouse	Son/ Daughter	Adopted/ Feeding Child	Son/ Daughter in law	Grand Child	Parent of Head/ Spouse	Grand Parent of Head/ Spouse	Brother/ Sister	Brother/ Sister in law	Uncle/ Aunt	Nephew/ Niece	Guest	Flat mate/ Joint Owner	Other
COOK ISLANDS	18,034	4,120	2,719	6,016	188	417	2,488	115	55	277	153	103	657	286	28	432
RAROTONGA	10,337	2,542	1,702	3,455	63	232	1,067	73	29	163	102	39	371	210	24	265
SOUTHERN GROUP	5,258	1,123	713	1,794	56	133	964	19	15	71	19	40	160	60	3	88
Aitutaki	2,272	492	319	853	8	53	326	8	4	31	11	26	63	31	2	45
Mangaia	1,083	237	153	304	36	33	215	2	3	17	5	10	40	8	-	20
Atiu	942	197	118	313	1	21	225	4	4	12	3	2	24	8	-	10
Mauke	643	133	85	214	9	18	126	4	3	8	-	2	20	10	1	10
Mitiaro	318	64	38	110	2	8	72	1	1	3	-	-	13	3	-	3
NORTHERN GROUP	2,439	455	304	767	69	52	437	23	11	43	32	24	126	16	1	79
Palmerston	49	11	5	8	1	1	10	-	-	2	1	-	8	-	-	2
Pukapuka	778	120	76	204	43	19	153	8	2	20	14	3	72	-	-	44
Nassau	99	21	14	38	-	-	10	-	2	2	1	1	6	-	-	4
Manihiki	656	148	91	244	7	15	91	6	-	10	7	3	14	12	-	8
Rakahanga	249	42	31	73	6	4	48	6	-	5	2	13	8	4	-	7
Penrhyn	604	112	86	200	10	13	125	3	7	4	7	4	18	-	1	14
Suvarrow	4	1	1	-	2	-	-	-	-	-	-	-	-	-	-	-

Table 4.3 : Resident Population by Sex, Island and Relationship to Head of Household

Sex : Male

Island & Region	Total	Head	Spouse	Son/ Daughter	Adopted/ Feeding Child	Son / Daughter in law	Grand Child	Parent of Head/ Spouse	Grand Parent of Head/ Spouse	Brother/ Sister	Brother/ Sister in law	Uncle/ Aunt	Nephew/ Niece	Guest	Flat mate Joint Owner	Other
COOK ISLANDS	9,297	3,183	246	3,107	96	209	1,307	34	22	169	74	64	361	174	15	236
RAROTONGA	5,277	1,922	188	1,764	26	128	551	26	14	102	44	21	206	125	11	149
SOUTHERN GROUP																
Aitutaki	2,710	864	49	919	28	56	529	3	5	43	13	27	92	34	3	45
Mangaia	1,158	376	22	437	1	21	180	2	1	15	8	18	40	16	2	19
Atiu	553	186	9	156	21	11	109	-	1	10	4	6	23	8	-	9
Mauke	485	150	13	147	1	9	128	-	2	11	1	2	10	3	-	8
Mauke	338	108	2	116	5	9	65	-	1	5	-	1	13	6	1	6
Mitiaro	176	44	3	63	-	6	47	1	-	2	-	-	6	1	-	3
NORTHERN GROUP																
Palmerston	1,310	397	9	424	42	25	227	5	3	24	17	16	63	15	1	42
Pukapuka	25	10	-	3	-	-	4	-	-	1	-	-	6	-	-	1
Nassau	404	101	-	108	25	7	84	1	1	11	5	1	35	-	-	25
Manihiki	54	18	-	24	-	-	4	-	1	-	1	-	2	-	-	4
Rakahanga	368	129	5	131	4	9	52	1	-	7	5	3	6	11	-	5
Penrhyn	135	37	1	39	6	3	24	2	-	2	1	8	7	4	-	1
Suvarow	321	102	2	119	5	6	59	1	1	3	5	4	7	-	1	6
	3	-	1	-	2	-	-	-	-	-	-	-	-	-	-	-

Table 4.3 : Resident Population by Sex, Island and Relationship to Head of Household

Sex : Female

Island & Region	Total	Head	Spouse	Son/ Daughter	Adopted/ Feeding Child	Son / Daughter in law	Grand Child	Parent of Head/ Spouse	Grand Parent of Head/ Spouse	Brother/ Sister	Brother/ Sister in law	Uncle/ Aunt	Nephew/ Niece	Guest	Flat mate Joint Owner	Other
COOK ISLANDS	8,737	937	2,473	2,909	92	208	1,161	81	33	108	79	39	296	112	13	196
RAROTONGA	5,060	620	1,514	1,691	37	104	516	47	15	61	58	18	165	85	13	116
SOUTHERN GROUP	2,548	259	664	875	28	77	435	16	10	28	6	13	68	26	-	43
Aitutaki	1,114	116	297	416	7	32	146	6	3	16	3	8	23	15	-	26
Mangaia	530	51	144	148	15	22	106	2	2	7	1	4	17	-	-	11
Atiu	457	47	105	166	-	12	97	4	2	1	2	-	14	5	-	2
Mauke	305	25	83	98	4	9	61	4	2	3	-	1	7	4	-	4
Mitiaro	142	20	35	47	2	2	25	-	1	1	-	-	7	2	-	-
NORTHERN GROUP	1,129	58	295	343	27	27	210	18	8	19	15	8	63	1	-	37
Palmerston	24	1	5	5	1	1	6	-	-	1	1	-	2	-	-	1
Pukapuka	374	19	76	96	18	12	69	7	1	9	9	2	37	-	-	19
Nassau	45	3	14	14	-	-	6	-	1	2	-	1	4	-	-	-
Manihiki	288	19	86	113	3	6	39	5	-	3	2	-	8	1	-	3
Rakahanga	114	5	30	34	-	1	24	4	-	3	1	5	1	-	-	6
Penthyrn	283	10	84	81	5	7	66	2	6	1	2	-	11	-	-	8
Suvarrow	1	1	-	-	-	-	-	-	-	-	-	-	-	-	-	-

Table 5.1: Private Occupied Dwellings by Island and Year Dwelling was Constructed

Island & Region	Total Unknown	Prior 1920	1920 - 1929	1930 - 1939	1940 - 1949	1950 - 1959	1960 - 1969	1970 - 1979	1980 - 1989	1990	1991	1992	1993	1994	1995	1996
COOK ISLANDS	4,153	38	27	48	100	352	1,054	833	867	131	95	132	137	120	101	89
RAROTONGA	2,589	32	16	25	59	186	585	526	573	87	64	90	105	84	59	61
SOUTHERN GROUP	1,127	3	4	13	26	128	363	228	211	30	15	23	18	22	25	17
Aitutaki	496	2	2	5	10	52	118	106	117	17	10	10	11	16	15	5
Mangaia	237	1	1	2	4	23	81	48	45	4	5	4	5	2	6	5
Atiu	197	-	1	2	4	31	86	43	21	5	-	3	1	-	-	-
Mauke	133	-	-	4	7	12	61	20	13	3	-	3	-	2	3	5
Mitiaro	64	-	-	-	1	10	17	11	15	1	-	3	1	2	1	2
NORTHERN GROUP	457	3	7	10	15	38	106	79	83	14	16	19	14	14	17	11
Palmerston	11	-	-	1	-	1	4	-	2	-	-	-	1	1	1	-
Pukapuka	120	2	3	5	4	5	44	28	14	-	-	1	6	1	-	-
Nassau	21	-	-	-	-	-	2	2	8	-	1	2	-	3	2	1
Maritiki	149	1	1	3	7	10	16	14	28	13	14	15	7	5	9	6
Rakahanga	42	-	2	1	-	2	9	5	14	-	1	1	-	-	3	3
Penrhyn	113	-	1	-	4	20	31	30	17	1	-	-	-	4	2	1
Suvarrow	1	-	-	-	-	-	-	-	-	-	-	-	-	-	-	-

Table 5.2: Private Occupied Dwellings by Island and Tenure of Dwelling

Island & Region	Total	Owned Outright	Occupying without charge	Provided free with job	On loan repayments/ mortgage	Rented
COOK ISLANDS	4,153	2,757	596	94	250	456
RAROTONGA	2,569	1,439	415	55	231	429
SOUTHERN GROUP	1,127	913	150	23	16	25
Aitutaki	496	386	84	5	9	12
Mangaia	237	213	13	6	2	3
Atiu	197	172	11	4	2	8
Mauke	133	87	38	6	-	2
Mitiaro	64	55	4	2	3	-
NORTHERN GROUP	457	405	31	16	3	2
Palmerston	11	11	-	-	-	-
Pukapuka	120	112	5	2	-	1
Nassau	21	21	-	-	-	-
Manihiki	149	129	14	4	1	1
Rakahanga	42	36	3	1	2	-
Penrhyn	113	96	9	8	-	-
Suvarrow	1	-	-	1	-	-

Table 5.3: Rented Private Occupied Dwellings by Island and Weekly Rent Paid

Island & Region	Total	<\$100	\$100-\$149	\$150-\$199	\$200 - \$250	>\$250
COOK ISLANDS	456	246	114	48	28	20
RAROTONGA	429	225	109	48	27	20
SOUTHERN GROUP	25	20	4	-	1	-
Aitutaki	12	8	3	-	1	-
Mangaia	3	3	-	-	-	-
Atiu	8	7	1	-	-	-
Mauke	2	2	-	-	-	-
Mitiaro	-	-	-	-	-	-
NORTHERN GROUP	2	1	1	-	-	-
Palmerston	-	-	-	-	-	-
Pukapuka	1	1	-	-	-	-
Nassau	-	-	-	-	-	-
Manihiki	1	-	1	-	-	-
Rakahanga	-	-	-	-	-	-
Penrhyn	-	-	-	-	-	-
Suvarrow	-	-	-	-	-	-

Table 5.4: Private Occupied Dwellings by Island and Outer Walls Construction Materials

Island & Region	Total	Wood Timber	Lime	Concrete Blocks	Hardboard	Fibrolite	Sticks koro kalara	Other
COOK ISLANDS	4,153	403	220	2,032	487	821	18	172
RAROTONGA	2,569	251	64	1,202	341	586	2	123
SOUTHERN GROUP	1,127	85	113	589	103	207	4	26
Aitutaki	496	40	71	204	70	92	1	18
Mangaia	237	16	11	155	24	26	-	5
Atiu	197	11	2	118	8	57	-	1
Mauke	133	12	13	88	-	19	1	-
Mitiaro	64	6	16	24	1	13	2	2
NORTHERN GROUP	457	67	43	241	43	28	12	23
Palmerston	11	1	2	1	2	3	-	2
Pukapuka	120	3	15	88	1	4	7	2
Nassau	21	18	-	-	2	1	-	-
Manihiki	149	34	11	49	31	15	3	6
Rakahanga	42	-	2	21	7	4	1	7
Penrhyn	113	10	13	82	-	1	1	6
Suvarrow	1	1	-	-	-	-	-	-

Table 5.5: Private Occupied Dwellings by Island and Roof Construction Material

Island & Region	Total	Roofing Iron	Asbestos	Kikau	Panda - naus	Other
COOK ISLANDS	4,153	3,807	23	104	15	204
RAROTONGA	2,569	2,356	14	4	-	195
SOUTHERN GROUP	1,127	1,082	5	23	12	5
Aitutaki	496	468	2	22	-	4
Mangaia	237	230	2	-	4	1
Atiu	197	197	-	-	-	-
Mauke	133	131	1	1	-	-
Mitiaro	64	56	-	-	8	-
NORTHERN GROUP	457	369	4	77	3	4
Palmerston	11	8	-	2	-	1
Pukapuka	120	104	3	13	-	-
Nassau	21	-	-	21	-	-
Manihiki	149	110	1	37	1	-
Rakahanga	42	36	-	2	2	2
Penrhyn	113	110	-	2	-	1
Suvarrow	1	1	-	-	-	-

**Table 5.6: Private Occupied Dwellings by Island and Number of Rooms
(excluding kitchen and veranda)**

Island & Region	Total	1	2	3	4	5	6	7	>7
COOK ISLANDS	4,153	379	444	740	841	768	505	212	264
RAROTONGA	2,569	168	294	540	518	466	292	133	158
SOUTHERN GROUP	1,127	131	85	118	236	238	166	66	87
Aitutaki	496	75	38	44	96	98	76	31	38
Mangaia	237	30	19	24	36	67	34	15	12
Atiu	197	5	9	24	61	33	30	10	25
Mauke	133	13	15	19	28	26	18	5	9
Mitiaro	64	8	4	7	15	14	8	5	3
NORTHERN GROUP	457	80	65	82	87	64	47	13	19
Palmerston	11	3	-	1	3	1	2	1	-
Pukapuka	120	4	9	19	27	20	24	8	9
Nassau	21	8	11	2	-	-	-	-	-
Manihiki	149	35	27	34	25	16	9	-	3
Rakahanga	42	11	7	5	5	8	5	1	-
Penrhyn	113	19	11	21	26	19	7	3	7
Suvarrow	1	-	-	-	1	-	-	-	-

Table 5.7: Private Occupied Dwellings by Island and Floor Construction Material

Island & Region	Total	Wood Timber	Concrete	Gravel	Earth	Lime	Tiles	Other
COOK ISLANDS	4,153	294	3,645	65	1	28	85	35
RAROTONGA	2,569	254	2,191	6	1	7	82	28
SOUTHERN GROUP	1,127	26	1,070	22	-	-	3	6
Aitutaki	496	18	468	2	-	-	3	5
Mangaia	237	4	223	10	-	-	-	-
Atiu	197	2	194	-	-	-	-	1
Mauke	133	2	130	1	-	-	-	-
Mitiaro	64	-	55	9	-	-	-	-
NORTHERN GROUP	457	14	384	37	-	21	-	1
Palmerston	11	-	9	1	-	1	-	-
Pukapuka	120	4	104	7	-	5	-	-
Nassau	21	1	2	18	-	-	-	-
Manihiki	149	6	132	8	-	3	-	-
Rakahanga	42	-	35	3	-	4	-	-
Penrhyn	113	3	101	-	-	8	-	1
Suvarrow	1	-	1	-	-	-	-	-

Table 5.8 : Number of Private Occupied Dwellings by Island and Water Supply

Island & Region	Source					
	Public Water Main	Public Water catchment	Own rainwater tank	Piped to Inside Dwelling	Piped to Outside Dwelling	Other
COOK ISLANDS	3,541	429	804	2,897	1,161	95
RAROTONGA	2,481	59	120	2,290	279	-
SOUTHERN GROUP	1,060	182	394	501	626	-
Aitutaki	470	43	183	322	174	-
Mangaia	234	61	27	58	179	-
Atiu	171	20	111	54	143	-
Mauke	129	1	17	48	85	-
Mitiaro	56	57	56	19	45	-
NORTHERN GROUP	-	188	290	106	256	95
Palmerston	-	3	8	3	6	2
Pukapuka	-	84	40	9	68	43
Nassau	-	21	3	2	1	18
Manihiki	-	68	94	51	75	23
Rakahanga	-	4	38	6	32	4
Penrhyn	-	8	106	35	73	5
Suvarrow	-	-	1	-	1	-

Table 5.9 : Private Occupied Dwellings by Island and Principal Means of Cooking

Island & Region	Electric Stove	Gas Stove	Kerosene Burner	Wood Crate	Micro wave
COOK ISLANDS	388	2,774	283	697	11
RAROTONGA	233	2,260	35	34	7
SOUTHERN GROUP	143	304	160	516	4
Aitutaki	122	141	104	128	1
Mangaia	7	83	31	116	-
Atiu	7	35	11	142	2
Mauke	7	23	14	88	1
Mitiaro	-	22	-	42	-
NORTHERN GROUP	12	210	88	147	-
Palmerston	-	11	-	-	-
Pukapuka	1	24	3	92	-
Nassau	-	11	-	10	-
Manihiki	4	71	57	17	-
Rakahanga	3	15	10	14	-
Penrhyn	4	78	17	14	-
Suvarrow	-	-	1	-	-

Table 5.10 : Number of Private Occupied Dwellings by Island, Appliances and Amenities

Island & Region	Electricity	Telephone	Kitchen Sink	Water Filter	Hot Water System	Bath & Shower	Flush Toilet	Pour Flush Toilet	Pit Toilet	Lagoon Toilet
COOK ISLANDS	3,828	3,042	2,967	631	1,192	3,398	2,942	756	570	118
RAROTONGA	2,495	2,067	2,236	584	1,142	2,417	2,373	186	30	-
SOUTHERN GROUP	1,044	734	501	29	46	744	466	353	530	-
Aitutaki	461	309	279	18	29	332	266	89	234	-
Mangaia	210	168	81	7	4	133	70	110	84	-
Afiiu	194	144	76	4	8	143	63	87	101	-
Mauke	118	80	47	-	5	99	53	17	105	-
Mitiaro	61	33	18	-	-	37	14	50	6	-
NORTHERN GROUP	289	241	170	18	4	237	103	217	10	118
Palmerston	10	-	6	-	-	7	7	6	4	-
Pukapuka	2	62	32	-	-	59	8	99	1	-
Nassau	16	-	12	1	-	10	-	14	3	-
Manihiki	119	86	47	9	3	50	35	33	-	89
Rakahanga	39	-	10	-	-	24	10	29	1	-
Penthyne	103	93	63	8	1	87	43	36	1	28
Suvarrow	-	-	-	-	-	-	-	-	-	1

Table 5.11 : Private Occupied Dwellings by Island and Energy Driven Cooking Appliances

Island & Region	Electric Stove	Gas Stove	Kerosene Stove	Micro- wave	Coffee Percolator	Rice Cooker	Pressure Cooker	Frying Pan	Jug/ Kettle	Food Processor	Toaster	Egg beater
COOK ISLANDS	553	3,275	623	953	416	551	362	3,591	3,688	871	2,369	1,381
RAROTONGA	376	2,378	68	791	344	382	305	2,346	2,265	712	1,833	1,053
SOUTHERN GROUP	157	585	371	135	63	59	45	902	1,028	126	448	252
Aitutaki	119	216	180	76	27	30	26	425	443	77	215	134
Mangaia	13	134	78	21	6	8	5	174	224	11	69	41
Atiu	11	119	66	27	25	13	9	170	191	24	94	44
Mauke	9	68	43	10	4	6	5	90	108	10	42	25
Mitiaro	5	48	4	1	1	2	-	43	62	4	28	8
NORTHERN GROUP	20	312	184	27	9	110	12	343	395	33	88	76
Palmerston	1	12	-	3	-	1	-	5	9	2	6	9
Pukapuka	1	94	19	1	1	1	1	136	138	1	2	1
Nassau	-	12	1	-	-	-	-	26	37	-	-	-
Manihiki	9	84	97	18	5	17	6	77	85	15	48	38
Rakahanga	2	20	25	-	-	4	1	36	45	-	9	10
Penthyne	7	90	41	5	3	87	4	63	81	15	23	18
Suvarrow	-	-	1	-	-	-	-	-	-	-	-	-

Table 5.12 : Private Occupied Dwellings by Island and Energy Driven Household Appliances

Island & Region	Freezer	Fridge	Zip	Dish- Washer	Iron	Washing Machine	Sewing Machine	Clothes Dryer	Shaver	Hair Cutter	Hair Dryer	Vacuum cleaner	Fan	Air Conditioner	Other Appliances
COOK ISLANDS	2,864	2,710	52	141	3,793	2,507	1,754	236	488	834	803	1,110	2,284	138	334
RAROTONGA	1,819	2,272	45	96	2,485	1,874	1,147	221	371	557	692	973	1,908	116	219
SOUTHERN GROUP	809	365	5	37	992	474	394	14	95	209	103	119	286	17	66
Aitutaki	337	218	2	32	430	268	187	7	41	95	70	68	189	14	50
Mangala	196	58	3	1	217	78	68	-	6	34	11	20	31	-	6
Ai'u	147	38	-	2	183	62	90	6	36	52	17	20	41	3	6
Mauke	78	38	-	-	112	44	33	1	9	21	4	7	15	-	4
Mitiaro	51	13	-	2	50	22	16	-	3	7	1	4	10	-	-
NORTHERN GROUP	236	73	2	8	316	159	213	1	22	68	8	18	90	5	49
Palmerston	25	4	-	-	12	10	9	-	-	3	-	2	9	-	-
Pukapuka	14	5	-	-	52	7	68	-	4	13	-	-	8	-	4
Nassau	1	-	-	-	11	1	11	-	3	5	-	-	1	-	20
Manihiki	100	26	1	-	101	54	58	-	6	17	3	3	27	1	22
Rakahanga	12	18	-	2	43	20	26	-	2	9	1	2	6	-	-
Penrhyn	83	20	1	6	97	67	41	1	7	21	4	11	39	4	3
Suvarrow	1	-	-	-	-	-	-	-	-	-	-	-	-	-	-

Table 5.13 : Private Occupied Dwellings by Island and Energy Driven Entertainment Appliances

Island & Region	Radio/ Cassette	TV Monitor	TV Video Player	Video Recorder	Video Camera	Personal Computer	Guitar	Piano/ Organ	Musical Instrument	TV Dish
COOK ISLANDS	3,692	2,779	2,576	1,031	200	384	898	291	499	43
RAROTONGA	2,525	2,062	1,827	764	182	310	576	227	350	36
SOUTHERN GROUP										
Aitutaki	829	551	540	207	23	63	218	53	95	3
Mangaia	383	307	206	118	11	49	89	32	43	2
Atiu	171	85	124	30	4	6	55	8	22	1
Mauke	166	94	112	34	5	6	42	8	24	-
Mitiaro	77	34	70	8	1	1	22	3	1	-
	32	31	28	17	2	1	10	2	5	-
NORTHERN GROUP										
Palmerston	338	166	209	60	15	11	104	11	54	4
Pukapuka	17	7	6	-	-	-	6	-	6	-
Nassau	98	27	47	20	1	-	21	1	19	-
Manihiki	14	3	3	2	-	-	8	-	-	-
Rakahanga	92	80	70	18	4	4	33	3	21	1
Penrhyn	36	1	18	9	1	-	8	2	3	1
Suvarrow	80	48	65	11	9	7	27	5	5	2
	1	-	-	-	-	-	1	-	-	-

Table 5.14: Private Occupied Dwellings by Island and Energy Driven Hardware Tools

Island & Region	Drill	Skill Compressor saw	Sander	Battery Charger	Generator	
COOK ISLANDS	1,535	1,151	237	682	892	321
RAROTONGA	942	706	170	461	583	154
SOUTHERN GROUP	291	266	48	127	222	53
Aitutaki	138	135	37	61	107	24
Mangaia	68	42	5	33	49	14
Atiu	53	57	4	23	48	8
Mauke	22	23	2	7	17	4
Mitiaro	10	9	-	3	1	3
NORTHERN GROUP	302	179	19	94	87	114
Palmerston	9	5	1	7	7	8
Pukapuka	41	48	-	5	10	12
Nassau	14	32	-	23	1	-
Manihiki	147	53	17	21	37	59
Rakahanga	11	4	-	3	1	2
Penrhyn	80	37	1	35	31	32
Suvarrow	-	-	-	-	-	1

Table 5.15: Private Occupied Dwellings by Island, and Type of Motor Vehicles

Island & Region	Motor cycle	Motor Car	Van	Mini bus	Truck	Utility Vehicle	Bicycle	Other Vehicle
COOK ISLANDS	3,519	1,133	304	33	388	357	2,048	70
RAROTONGA	2,114	1,004	286	27	303	284	1,492	42
SOUTHERN GROUP	1,155	126	17	6	76	71	366	23
Aitutaki	598	59	14	6	35	42	165	8
Mangaia	198	17	1	-	27	16	76	3
Atiu	160	28	2	-	8	7	82	8
Mauke	127	20	-	-	6	5	31	4
Mitiaro	72	2	-	-	-	1	12	-
NORTHERN GROUP	250	3	1	-	9	2	190	5
Palmerston	-	-	-	-	-	-	3	-
Pukapuka	61	-	1	-	1	2	63	-
Nassau	14	-	-	-	-	-	6	-
Manihiki	80	1	-	-	2	-	54	4
Rakahanga	16	-	-	-	-	-	18	-
Penrhyn	79	2	-	-	6	-	46	1
Suvarrow	-	-	-	-	-	-	-	-

Table 5.16: Private Occupied Dwellings by Island and Agriculture Activity

Island & Region	Total Number of Dwellings	Mainly Subsistence	Mainly Commercial	No Agriculture Activity
COOK ISLANDS	4,153	2,723	213	1,217
RAROTONGA	2,569	1,407	144	1,018
SOUTHERN GROUP	1,127	911	63	153
Aitutaki	496	332	57	107
Mangaia	237	224	1	12
Atiu	197	177	2	18
Mauke	133	121	2	10
Mitiaro	64	57	1	6
NORTHERN GROUP	457	405	6	46
Palmerston	11	11	-	-
Pukapuka	120	116	1	3
Nassau	21	21	-	-
Manihiki	149	111	5	33
Rakahanga	42	40	-	2
Penrhyn	113	105	-	8
Suvarrow	1	1	-	-

Table 5.17: Private Occupied Dwellings by Island and Farm Machinery

Island & Region	Tractor	Rotary hoe	Mist blower	Grass cutter	Motor mower	Disc	Plough	Tyne	Slasher	Knapsack Sprayer
COOK ISLANDS	222	309	140	1,780	2,048	96	138	24	84	948
RAROTONGA	192	259	113	1,391	1,434	89	128	23	70	551
SOUTHERN GROUP	30	50	27	370	612	7	10	1	13	395
Aitutaki	22	28	16	90	360	7	7	1	8	179
Mangaia	4	2	-	129	78	-	1	-	2	139
Atiu	3	9	5	82	104	-	1	-	3	63
Mauke	1	9	2	46	60	-	1	-	-	13
Mitiaro	-	2	4	23	10	-	-	-	-	1
NORTHERN GROUP	-	-	-	19	2	-	-	-	1	2
Palmerston	-	-	-	-	-	-	-	-	-	-
Pukapuka	-	-	-	-	-	-	-	-	-	-
Nassau	-	-	-	-	-	-	-	-	-	-
Manihiki	-	-	-	4	-	-	-	-	-	1
Rakahanga	-	-	-	7	1	-	-	-	1	-
Penrhyn	-	-	-	8	1	-	-	-	-	1
Suvarrow	-	-	-	-	-	-	-	-	-	-

Table 5.18: Total Number of Livestock, including Pets, by Island

Island & Region	Number of Livestock							
	Pig	Goat	Cattle	Duck	Horse	Chicken	Cat	Dog
COOK ISLANDS	19,312	3,703	375	138	157	35,403	3,005	2,934
RAROTONGA	7,956	1,175	210	121	124	12,001	1,929	2,420
SOUTHERN GROUP	8,665	2,525	165	17	33	17,473	730	514
Aitutaki	2,654	634	103	-	8	4,837	276	-
Mangaia	2,343	548	1	14	16	3,418	187	261
Atiu	2,351	677	7	-	6	5,737	142	233
Mauke	1,017	646	54	3	3	2,768	75	-
Mitiaro	300	20	-	-	-	713	50	20
NORTHERN GROUP	2,691	3	-	-	-	5,929	346	-
Palmerston	30	-	-	-	-	370	8	-
Pukapuka	516	-	-	-	-	3,173	94	-
Nassau	70	1	-	-	-	623	68	-
Manihiki	1,030	-	-	-	-	744	139	-
Rakahanga	431	-	-	-	-	432	12	-
Penrhyn	614	2	-	-	-	564	22	-
Suvarrow	-	-	-	-	-	23	3	-

Table 5.19: Private Occupied Dwellings by Island Engaged in Fishing Activities

Island & Region	Fishing Activity				Dwelling Engaged in Fishing		
	Total Number of Dwellings	Mainly Subsistence	Mainly Commercial	No Fishing Activity	In Reef	Outside Reef	Both In & Outside Reef
COOK ISLANDS	4,153	2,764	159	1,230	1,081	105	1,737
RAROTONGA	2,569	1,459	65	1,045	722	87	715
SOUTHERN GROUP	1,127	919	43	165	328	17	617
Aitutaki	496	369	40	87	144	4	261
Mangaia	237	223	-	14	78	3	142
Atiu	197	154	2	41	61	3	92
Mauke	133	116	1	16	41	7	69
Mitiaro	64	57	-	7	4	-	53
NORTHERN GROUP	457	386	51	20	31	1	405
Palmerston	11	11	-	-	1	-	10
Pukapuka	120	115	-	5	4	-	111
Nassau	21	18	-	3	1	-	17
Manihiki	149	94	51	4	21	1	123
Rakahanga	42	41	-	1	1	-	40
Penrhyn	113	106	-	7	2	-	104
Suvarrow	1	1	-	-	1	-	-

Table 5.20: Fishing Equipment by Island

Island & Region	Speargun	Canoe	Boat	Fishing Net	Fishing Rod	Outboard Motor
COOK ISLANDS	1,571	628	663	1,797	5,208	832
RAROTONGA	760	145	190	760	1,659	196
SOUTHERN GROUP	507	346	182	647	1,604	272
Aitutaki	310	179	141	419	781	169
Mangaia	92	59	9	98	219	53
Atiu	40	45	16	80	289	16
Mauke	51	25	13	34	105	14
Mitiaro	14	38	3	16	210	20
NORTHERN GROUP	304	137	291	390	1,945	364
Palmerston	11	5	22	29	83	20
Pukapuka	50	96	50	125	568	66
Nassau	14	16	-	19	65	2
Manihiki	151	16	113	131	232	158
Rakahanga	30	2	27	37	131	29
Penrhyn	47	2	77	49	864	88
Suvarrow	1	-	2	-	2	1

<p>1 Name of Person In Charge of Dwelling:</p> <p>_____</p> <p style="text-align: center;">Firstname Surname</p>	<p>6 Materials of construction of dwelling:</p> <p>Outer walls _____</p> <p>Roof _____</p> <p>Floor _____</p>
<p>2 Count all persons living in this dwelling on Census Night.</p> <p>Do not forget to count babies.</p> <p>_____</p> <p style="text-align: center;">Male Female Total</p>	<p>7 Count the number of rooms in this dwelling:</p> <div style="border: 1px solid black; padding: 10px; margin: 10px 0;"> <p style="text-align: center;"><i>DO NOT COUNT</i></p> <p style="text-align: center;"><i>rooms used as: laundry, bathroom, toilet and garages.</i></p> </div> <p>Nos: _____</p> <p style="text-align: right;">Rooms</p>
<p>3 Type of Dwelling: Tick circle (✓) which applies</p> <p>1 <input type="radio"/> Private dwelling</p> <p>2 <input type="radio"/> Non private dwelling, such as (Hotels, Motels, Hospitals, Hostels, etc.)</p> <div style="border: 2px solid black; padding: 5px; margin-top: 10px; text-align: center;"> <p>IF NON PRIVATE GOTO 22</p> </div>	<p>8 Source of Water: Tick circles (✓) which apply</p> <p>1 <input type="radio"/> Public water main</p> <p>2 <input type="radio"/> Public water catchment</p> <p>3 <input type="radio"/> Own rainwater tank</p>
<p>4 State year in which dwelling was constructed:</p> <p style="text-align: center;">_____</p> <p style="text-align: center;">Year</p>	<p>9 Supply of Water: Tick circle (✓) which applies</p> <p>1 <input type="radio"/> Piped to inside Dwellings</p> <p>2 <input type="radio"/> Piped to outside Dwellings</p>
<p>5 Dwelling Tenure: Tick circle (✓) which applies</p> <p>1 <input type="radio"/> Owned outright</p> <p>2 <input type="radio"/> Occupying without charge</p> <p>3 <input type="radio"/> Provided free with job</p> <p>4 <input type="radio"/> On loan repayment/mortgage</p> <p>5 <input type="radio"/> Rented or Leased</p> <p style="margin-top: 20px;">If Dwelling is Rented or Leased</p> <p>(a) State weekly rent in dollars: \$ _____</p> <p>(b) Tick circle (✓) which applies</p> <p>1 <input type="radio"/> Unfurnished</p> <p>2 <input type="radio"/> Partly furnished</p> <p>3 <input type="radio"/> Fully furnished</p>	<p>10 Principal Means of Cooking: Tick circle (✓) which applies</p> <p>1 <input type="radio"/> Electric Stove 4 <input type="radio"/> Wood grate</p> <p>2 <input type="radio"/> Gas Stove 5 <input type="radio"/> Micro-wave</p> <p>3 <input type="radio"/> Kerosene burner</p>
	<p>11 Appliances and Amenities: Tick circles (✓) which apply</p> <p>1 <input type="radio"/> Electricity 6 <input type="radio"/> Bath/shower</p> <p>2 <input type="radio"/> Telephone 7 <input type="radio"/> Flush toilet</p> <p>3 <input type="radio"/> Kitchen sink 8 <input type="radio"/> Pour-flush toilet</p> <p>4 <input type="radio"/> Water filter 9 <input type="radio"/> Pit toilet</p> <p>5 <input type="radio"/> Hot water system 10 <input type="radio"/> Lagoon toilet</p>

12 Agriculture Activity: <i>Tick circle (✓) which applies</i> The household is engaged in: 1 <input type="radio"/> Mainly subsistence 2 <input type="radio"/> Mainly commercial 3 <input type="radio"/> No agricultural activity	18 Cooking Appliances: <i>Count only those owned and in working order</i> 1 Stove electric _____ 7 Pressure cooker _____ 2 Stove gas _____ 8 Frying pan _____ 3 Stove kerosene _____ 9 Jug/kettle _____ 4 Microwave oven _____ 10 Food processor _____ 5 Coffee percolator _____ 11 Toaster _____ 6 Rice cooker _____ 12 Eggbeater _____
13 Livestock: <i>Count the number of livestock and pets owned</i> 1 Pig _____ 5 Horse _____ 2 Goat _____ 6 Chicken _____ 3 Cattle _____ 7 Cat _____ 4 Duck _____ 8 Dog _____	19 Household Appliances: <i>Count only those owned and in working order</i> 1 Freezer _____ 8 Clothes dryer _____ 2 Refrigerator _____ 9 Shaver _____ 3 Zip _____ 10 Hair cutter _____ 4 Dishwasher _____ 11 Hair dryer _____ 5 Iron _____ 12 Vacuum cleaner _____ 6 Washing machine _____ 13 Fan _____ 7 Sewing machine _____ 14 Air conditioner _____ 15 Other appliances _____
14 Farm Machinery: <i>Count only those owned and in working order</i> 1 Tractor _____ 6 Disc _____ 2 Rotary hoe _____ 7 Plough _____ 3 Mist blower _____ 8 Tyne _____ 4 Grass cutter _____ 9 Slasher _____ 5 Motor mower _____ 10 Knapsack sprayer _____	20 Entertainment Appliances: <i>Count only those owned and in working order</i> 1 Radio/cassette _____ 7 Guitar _____ 2 TV Monitor _____ 8 Piano/organ _____ 3 TV Video player _____ 9 Musical Instrument _____ 4 Video recorder _____ 10 TV Dish _____ 5 Video camera _____ 6 Personal computer _____
15 Fishing Activity: <i>Tick circles (✓) which apply</i> (a) The household is engaged in: (b) The household fish: 1 <input type="radio"/> Mainly subsistence 1 <input type="radio"/> Only in reef 2 <input type="radio"/> Mainly commercial 2 <input type="radio"/> Only outside reef 3 <input type="radio"/> No fishing activity 3 <input type="radio"/> Both in reef and outside reef	21 Transport: <i>Count only those owned and in working order</i> 1 Motor cycle _____ 6 Utility vehicle _____ 2 Motor Car _____ 7 Bicycle _____ 3 Van _____ 8 Other vehicle _____ 4 Mini bus _____ 5 Truck _____
16 Fishing Equipment: <i>Count only those owned and in working order</i> 1 Speargun _____ 4 Fishing net _____ 2 Canoe _____ 5 Fishing rod _____ 3 Boat _____ 6 Outboard motor _____	
17 Hardware Tools: <i>Count only those owned and in working order</i> 1 Drill _____ 5 Battery charger _____ 2 Skill saw _____ 6 Generator _____ 3 Compressor _____ 7 Other tools _____ 4 Sander _____	

22 DECLARATION: I HEREBY DECLARE THAT THE PARTICULARS GIVEN ABOVE ARE TRUE AND COMPLETE TO THE BEST OF MY KNOWLEDGE AND BELIEF.

Signature

Thank you for your cooperation.



COOK ISLANDS
CENSUS OF POPULATION AND DWELLINGS
Midnight, between Saturday 30 November and Sunday 1 December 1996

CONFIDENTIAL

Personal Questionnaire

Statistics Office
Rarotonga, Cook Islands

This Census is taken under the authority of the Statistics Act 1966

Person No:

All information obtained will be kept **confidential** and used for statistical purposes only

A questionnaire is to be completed by or for each person found in the Cook Islands on Census Night

<p>1 Name: _____ Firstname Surname</p> <p>2 Sex: Tick circle (✓) which applies 1 <input type="radio"/> Male 2 <input type="radio"/> Female</p> <p>3 Relationship to Person in Charge of Household: Tick circle (✓) which applies 1 <input type="radio"/> Head 4 <input type="radio"/> Guest 2 <input type="radio"/> Spouse 5 <input type="radio"/> Other, specify _____ 3 <input type="radio"/> Son/Daughter</p> <p>4 Date of Birth: _____ Day / Month / Year</p> <p>5 Place of Birth: _____ Island/Country</p> <p>6 Visitors Only: If you are a visitor tick circle (✓) <input type="radio"/> <div style="border: 1px solid black; padding: 5px; display: inline-block; margin-top: 10px;">A VISITOR is a person who does not normally reside in the Cook Islands.</div><div style="text-align: right; margin-top: 10px;">GO TO 22</div></p> <p>7 Ethnic Origin: Tick circle (✓) which applies 1 <input type="radio"/> Cook Island Maori GO TO 9 2 <input type="radio"/> Part Cook Island Maori 3 <input type="radio"/> Other ethnic origin</p> <p>8 Residential Status: Tick circle (✓) which applies 1 <input type="radio"/> Temporary contract worker 2 <input type="radio"/> Dependent of temporary worker 3 <input type="radio"/> Other Nationality _____ State number of years you have lived in the Cook Islands. _____</p> <p>9 Address on Census Night: Village _____ Island _____ (i) If you usually live at the above address, tick (✓) circle else state your usual residential address. <input type="radio"/> Village/ _____ Island/ _____ City _____ Country _____ (ii) How long have you lived on the Island of your usual address. _____</p>	<p>(iii) If your usual residential address one year ago was the same as 9(i) tick (✓) circle else state your residential address in 1 December 1995. Village/ _____ Island/ <input type="radio"/> City _____ Country _____</p> <p>(iv) If your usual residential address five years ago was the same as 9(iii) tick (✓) circle else state your residential address in 1 December 1991. Village/ _____ Island/ <input type="radio"/> City _____ Country _____</p> <p>10 Religion: Tick circle (✓) which applies 1 <input type="radio"/> No Religion 2 <input type="radio"/> Cook Islands Christian Church 3 <input type="radio"/> Roman Catholic 4 <input type="radio"/> Seventh Day Adventist 5 <input type="radio"/> Church of Jesus Christ of Latter Days Saints 6 <input type="radio"/> Other, specify _____ 7 <input type="radio"/> I OBJECT to answering this question</p> <p style="background-color: #cccccc; text-align: center; padding: 5px;">If you are under 15 years GO TO 22 else continue.</p> <p>11 Marital Status: Tick circle (✓) which applies 1 <input type="radio"/> Never Married 4 <input type="radio"/> Separated from legal partner 2 <input type="radio"/> Married 5 <input type="radio"/> Divorced 3 <input type="radio"/> Widowed</p> <p>12 Educational Attainment: Tick circles (✓) which apply (a) Are you still attending school? 1 <input type="radio"/> Yes 2 <input type="radio"/> No (b) What is your highest education level completed? e.g Grade 6, Form 5, Stage III Specify _____ (c) What is your highest school qualification gained? e.g School Certificate, University Bursary Specify _____ (d) What is your highest Trade, Vocational or Professional qualification gained? e.g Trade Certificate, Bachelors Degree, Teachers Diploma Specify _____</p>
---	---

<p>13 Activity Status: Tick circle (✓) which applies</p> <p>1 <input type="radio"/> Employer, own business/plantation without employees</p> <p>2 <input type="radio"/> Employer, own business/plantation with employees</p> <p>3 <input type="radio"/> Working full time for wages/salary</p> <p>4 <input type="radio"/> Working part time for wage or on casual basis</p> <p>5 <input type="radio"/> Unpaid family worker in plantation/store/business</p> <p>6 <input type="radio"/> Home Duties → GO TO 17</p> <p>7 <input type="radio"/> Full time student → GO TO 15</p> <p>8 <input type="radio"/> Unemployed and looking for work → GO TO 16</p> <p>9 <input type="radio"/> Retired → GO TO 17</p> <p>10 <input type="radio"/> Disabled → GO TO 17</p>	<p>17 Unpaid Work: Tick (✓) as many circles as you may require.</p> <table style="width: 100%;"> <tr> <td>1 <input type="radio"/> Looking after children</td> <td>5 <input type="radio"/> Tending the garden</td> </tr> <tr> <td>2 <input type="radio"/> Housework</td> <td>6 <input type="radio"/> Fishing</td> </tr> <tr> <td>3 <input type="radio"/> Handicraft making</td> <td>7 <input type="radio"/> Catering</td> </tr> <tr> <td>4 <input type="radio"/> Tending the livestock</td> <td>8 <input type="radio"/> Sewing</td> </tr> </table>	1 <input type="radio"/> Looking after children	5 <input type="radio"/> Tending the garden	2 <input type="radio"/> Housework	6 <input type="radio"/> Fishing	3 <input type="radio"/> Handicraft making	7 <input type="radio"/> Catering	4 <input type="radio"/> Tending the livestock	8 <input type="radio"/> Sewing		
1 <input type="radio"/> Looking after children	5 <input type="radio"/> Tending the garden										
2 <input type="radio"/> Housework	6 <input type="radio"/> Fishing										
3 <input type="radio"/> Handicraft making	7 <input type="radio"/> Catering										
4 <input type="radio"/> Tending the livestock	8 <input type="radio"/> Sewing										
<p>14 Principal Activity:</p> <p>(a) Give details of work done: e.g. citrus grower, wharf labourer, accounts clerk.</p> <hr/> <p>(b) Give name of the business/employer that you worked for: e.g. Statistics Dept., CITC, Tangi Growers, etc</p> <hr/> <p>(c) Type of business/activity: e.g. Services, Retail Trade, Manufacturing, etc.</p> <hr/> <p>(d) How many hours usually worked at this job in a week. _____ hrs</p>	<p>18 Social Welfare Benefits: Tick circles (✓) which apply (a) Indicate benefit(s) received in the last twelve months.</p> <table style="width: 100%;"> <tr> <td>1 <input type="radio"/> None</td> <td>4 <input type="radio"/> Destitute/Infirm</td> </tr> <tr> <td>2 <input type="radio"/> Child</td> <td>5 <input type="radio"/> Superannuation</td> </tr> <tr> <td>3 <input type="radio"/> Old Age</td> <td>6 <input type="radio"/> War Pension</td> </tr> </table>	1 <input type="radio"/> None	4 <input type="radio"/> Destitute/Infirm	2 <input type="radio"/> Child	5 <input type="radio"/> Superannuation	3 <input type="radio"/> Old Age	6 <input type="radio"/> War Pension				
1 <input type="radio"/> None	4 <input type="radio"/> Destitute/Infirm										
2 <input type="radio"/> Child	5 <input type="radio"/> Superannuation										
3 <input type="radio"/> Old Age	6 <input type="radio"/> War Pension										
<p>15 Secondary Activity: Were you engaged in other activities for gain?</p> <p>(a) Give details of work done: e.g. citrus grower, wharf labourer, accounts clerk.</p> <hr/> <p>(b) Give name of the business/employer that you worked for: e.g. Statistics Dept., CITC, Tangi Growers, etc</p> <hr/> <p>(c) Type of business/activity: e.g. Services, Retail Trade, Manufacturing, etc.</p> <hr/> <p>(d) How many hours usually worked at this job in a week. _____ hrs</p>	<p>19 Income: From ALL the sources of Income you get what will be your total income including benefits before tax for the 12 months that will end on 1 December, 1996. Tick circle (✓) which applies</p> <table style="width: 100%;"> <tr> <td>1 <input type="radio"/> no income</td> <td>6 <input type="radio"/> \$20,000 - \$29,999</td> </tr> <tr> <td>2 <input type="radio"/> less than \$5,000</td> <td>7 <input type="radio"/> \$30,000 - \$39,999</td> </tr> <tr> <td>3 <input type="radio"/> \$5,000 - \$9,999</td> <td>8 <input type="radio"/> \$40,000 - \$49,999</td> </tr> <tr> <td>4 <input type="radio"/> \$10,000 - \$14,999</td> <td>9 <input type="radio"/> \$50,000 and over</td> </tr> <tr> <td>5 <input type="radio"/> \$15,000 - \$19,999</td> <td></td> </tr> </table>	1 <input type="radio"/> no income	6 <input type="radio"/> \$20,000 - \$29,999	2 <input type="radio"/> less than \$5,000	7 <input type="radio"/> \$30,000 - \$39,999	3 <input type="radio"/> \$5,000 - \$9,999	8 <input type="radio"/> \$40,000 - \$49,999	4 <input type="radio"/> \$10,000 - \$14,999	9 <input type="radio"/> \$50,000 and over	5 <input type="radio"/> \$15,000 - \$19,999	
1 <input type="radio"/> no income	6 <input type="radio"/> \$20,000 - \$29,999										
2 <input type="radio"/> less than \$5,000	7 <input type="radio"/> \$30,000 - \$39,999										
3 <input type="radio"/> \$5,000 - \$9,999	8 <input type="radio"/> \$40,000 - \$49,999										
4 <input type="radio"/> \$10,000 - \$14,999	9 <input type="radio"/> \$50,000 and over										
5 <input type="radio"/> \$15,000 - \$19,999											
<p>16 Unemployed Only and looking for work:</p> <p>(a) Have you ever had paid work ?</p> <p>1 <input type="radio"/> Yes → 2 <input type="radio"/> No</p> <p>(b) How many weeks since you last had paid work? _____ weeks</p>	<p>20 Land Rights: Tick circles (✓) which apply</p> <p>(a) Do you have rights to land or will you succeed to land on the island of usual residence and other islands of the Cook Islands.</p> <p>1 <input type="radio"/> Yes 2 <input type="radio"/> No If NO AND A MALE GO TO 22 ELSE GO TO 21</p> <p>(b) Land Tenure</p> <p>1 <input type="radio"/> You are a land owner by succession and your rights have been determined by the land court.</p> <p>State islands: _____</p> <table style="width: 100%;"> <tr> <td style="width: 50%;"> <p>2 <input type="radio"/> Sole occupation right</p> <p>3 <input type="radio"/> Joint Occupation right</p> <p>4 <input type="radio"/> Other right</p> <p>↓</p> <p>(c) Purposes of the Occupation Right</p> <p>1 <input type="radio"/> House site</p> <p>2 <input type="radio"/> Agriculture</p> <p>3 <input type="radio"/> Other</p> </td> <td style="width: 50%;"> <p>4 <input type="radio"/> Lease/Sub-lease</p> <p>↓</p> <p>(d) Purposes of the Lease/Sub-lease</p> <p>1 <input type="radio"/> House site</p> <p>2 <input type="radio"/> Agriculture</p> <p>3 <input type="radio"/> Other</p> </td> </tr> </table>	<p>2 <input type="radio"/> Sole occupation right</p> <p>3 <input type="radio"/> Joint Occupation right</p> <p>4 <input type="radio"/> Other right</p> <p>↓</p> <p>(c) Purposes of the Occupation Right</p> <p>1 <input type="radio"/> House site</p> <p>2 <input type="radio"/> Agriculture</p> <p>3 <input type="radio"/> Other</p>	<p>4 <input type="radio"/> Lease/Sub-lease</p> <p>↓</p> <p>(d) Purposes of the Lease/Sub-lease</p> <p>1 <input type="radio"/> House site</p> <p>2 <input type="radio"/> Agriculture</p> <p>3 <input type="radio"/> Other</p>								
<p>2 <input type="radio"/> Sole occupation right</p> <p>3 <input type="radio"/> Joint Occupation right</p> <p>4 <input type="radio"/> Other right</p> <p>↓</p> <p>(c) Purposes of the Occupation Right</p> <p>1 <input type="radio"/> House site</p> <p>2 <input type="radio"/> Agriculture</p> <p>3 <input type="radio"/> Other</p>	<p>4 <input type="radio"/> Lease/Sub-lease</p> <p>↓</p> <p>(d) Purposes of the Lease/Sub-lease</p> <p>1 <input type="radio"/> House site</p> <p>2 <input type="radio"/> Agriculture</p> <p>3 <input type="radio"/> Other</p>										
<p>21 Females Only: Include all children born alive to you.</p> <p>Total Number of children</p> <table style="width: 100%;"> <tr> <td style="width: 50%;"> <p>a) Born alive:</p> <p>Males _____</p> <p>Females _____</p> </td> <td style="width: 50%;"> <p>(b) Still living</p> <p>Males _____</p> <p>Females _____</p> </td> </tr> <tr> <td colspan="2"> <p>(c) Date of birth of:</p> <p>First child / / Last child / /</p> <p style="text-align: center;">Day / Month / Year Day / Month / Year</p> </td> </tr> </table>	<p>a) Born alive:</p> <p>Males _____</p> <p>Females _____</p>	<p>(b) Still living</p> <p>Males _____</p> <p>Females _____</p>	<p>(c) Date of birth of:</p> <p>First child / / Last child / /</p> <p style="text-align: center;">Day / Month / Year Day / Month / Year</p>								
<p>a) Born alive:</p> <p>Males _____</p> <p>Females _____</p>	<p>(b) Still living</p> <p>Males _____</p> <p>Females _____</p>										
<p>(c) Date of birth of:</p> <p>First child / / Last child / /</p> <p style="text-align: center;">Day / Month / Year Day / Month / Year</p>											

22 DECLARATION: I HEREBY DECLARE THAT THE PARTICULARS GIVEN ABOVE ARE TRUE AND COMPLETE TO THE BEST OF MY KNOWLEDGE AND BELIEF.

Signature

Thank you for your cooperation.

7 ACKNOWLEDGEMENT

The following people are gratefully acknowledged for their time and efforts during the enumeration period:

RAROTONGA

Pue-Matavera

Mata Pepe, Supervisor
Elizabeth Tupa, Enumerator
Metua Vakapora, Enumerator
Ngere Maeva Towgood, Enumerator
Yitiri Akama, Enumerator
Marcus Kopu, Enumerator
Nga Potoru, Enumerator
Tepaeru Matutu, Enumerator

Tupapa-Maraerenga

Teokotai Areai, Supervisor
Kaiata Tanga, Enumerator
Tapita Teokotai, Enumerator
Mairi Robert, Enumerator
Marevatai Tereapii, Enumerator

Takuvaine-Parekura-Tutakimoa-Teotue

Tangi Tereapii, Supervisor
Tekura Potoru, Enumerator
Edwin Henry, Enumerator
Mona Pokoati, Enumerator
Teina Frank, Enumerator
Robert Matamaki, Enumerator
Vaniu Savage, Enumerator
Tangata Havi Samania, Enumerator
Ina Manea Pouao, Enumerator
Inangaro Tupuna, Enumerator
Noora Pita Totoo, Enumerator
Tautau Reremoana, Enumerator

Ruatonga

Teariki Rauru, Supervisor
Ngatoko Ngatoko, Enumerator
Moetu Tangitamaiti, Enumerator
Mata Ringi John, Enumerator

Avatiu

John Henry, Supervisor
Ngametua Toru, Enumerator
Cedric Toru, Enumerator
Rouru Thompson, Enumerator
Tearoa Iorangi, Enumerator

Atupa-Panama

Moeroa Tuaine, Supervisor
Kura Toru, Enumerator
Tepaeru Thompson, Enumerator

Maria T Teaurima, Enumerator
Ngametua Arakua, Enumerator

Nikao-Pokoinu

Rairi Rairi, Supervisor
Kori Raumea, Enumerator
Helen Rauraa, Enumerator
Tauturu Hosking, Enumerator
David Vaine, Enumerator

Ruaau-Arurangi

Taarauru Apera, Supervisor
Tepaeru Iki, Enumerator
Akanoa W. Akanoa, Enumerator
Tapu Mitchell, Enumerator
Janice Robati, Enumerator
Tavake Manuel, Enumerator
Elizabeth Munro, Enumerator
Tania Temata, Enumerator

Akaoa-Arurangi

Pare Rongokea, Supervisor
Annie Ben, Enumerator
Rex Valoa, Enumerator
Vaine Teokoitu, Enumerator
Ruta Pokura, Enumerator
Shirley Napa, Enumerator

Murienua-Arurangi

Rangi Dean-Teina, Supervisor
Ritua Valoa, Enumerator
Teline Miria, Enumerator
Pai Obeda, Enumerator
Mikara Utia, Enumerator
Margaret Teiti, Enumerator
Tuaine Taio, Enumerator

Titikaveka

Ani Piri, Supervisor
Rouru Tangatapoto, Enumerator
Rauti Takitaki, Enumerator
George Short, Enumerator
Moana Piri, Enumerator
Tamaiti Tutira, Enumerator
Kate Numanga, Enumerator
Tupu Hagan, Enumerator

Ngatangia

Manine Mato, Supervisor
 Tina Kauvai, Enumerator
 Eturangi Temarama, Enumerator
 Moe Toa, Enumerator
 Teputiki Kainuku, Enumerator
 Shona Mato, Enumerator
 Tama Joseph, Enumerator

Matavera

Noo Ngamata, Supervisor
 Rima Teraitua, Enumerator
 Thomas Ngauru, Enumerator
 Tereapii Enua, Enumerator
 Madeline Kare, Enumerator
 Robert Utanga, Enumerator
 Tira Albert, Enumerator

AITUTAKI

Melanie Toko, Supervisor
 Rachel Raukete, Enumerator
 Josephine Lockington, Enumerator
 Maki Toko, Enumerator
 Matangaro Charlie Rio, Enumerator
 Ina Maramatoa, Enumerator
 Ruta Tare, Enumerator
 John Iorangi, Enumerator
 Ina Solomona, Enumerator
 Amelia Jubilee, Enumerator
 Raukete Elia, Enumerator
 Mauke Mauke, Enumerator
 Raroua Hewett, Enumerator
 Teau Maki, Enumerator

MANGAIA

Marion Orake, Supervisor
 Wake Mani, Enumerator
 Tereroa Papatua, Enumerator
 Mary Ngaeruaiti, Enumerator
 Maki Areai, Enumerator
 Ngai Aratangi, Enumerator
 Unlucky Tungata, Enumerator

ATIU

Roland Toki, Supervisor
 Ake Kautai, Enumerator
 Denis Tuariki, Enumerator
 Tuaine Rakei, Enumerator
 Tereroa C. Toka, Enumerator
 Ngatamariki Vainerere, Enumerator
 Aerenga Upokokey, Enumerator

MAUKE

Taputu Mariri, Supervisor
 Noema Rouru, Enumerator
 Metua Tararo, Enumerator
 Joan Taripo, Enumerator

Basillio Tutai Kaokao, Enumerator

MITIARO

Rohea Tangaroa, Supervisor
 Matatai Taia, Enumerator

PUKAPUKA/NASSAU

Griffith Robati, Supervisor
 Tukia Mataora, Enumerator
 Tiaki Wuatai, Enumerator
 Tuiva Kalowia, Enumerator
 Walewaoa Teingoa, Enumerator
 Wuatai Wuatai, Enumerator

MANIHIKI

Louise Graham, Supervisor
 Ana Katoa, Enumerator
 Taromi Solomona, Enumerator
 Mathew Taui, Enumerator
 Rebecca Hosking, Enumerator

RAKAHANGA

Temu Hagai, Supervisor
 Danny Piho, Enumerator
 Toka Tuteru, Enumerator

PENRHYN

Terepai Tutai, Supervisor
 Alex Maretapu, Enumerator
 Dorothy Munro, Enumerator
 Tetuariki Mariri, Enumerator
 Teanau Taripo, Enumerator

PALMERSTON

Kai Marsters, Enumerator

OTHER AREAS

Tapukura Rairi, Enumerator Hospital In- Patients
 Outer Islands Government Representatives
 Officers of the Patrol Boat "TE KUKUPA"
 Management and Staff of:
 Cook Islands Press, Cook Islands News,
 Cook Islands Broadcasting Services, Are Printing
 and Raro Printing

STATISTICS OFFICERS

Tanga Morris, Snr Statistics Officer
 Amelia Ngatokorua, Snr Statistics Officer
 Enua Pakitoa, Statistics Officer
 Ani Koroo, Statistics Officer
 Michelle Pierre, Statistics Officer
 Maru Willie, Statistics Officer
 Cathy Thompson, Statistics Officer
 Tangi Peraua, Statistics Officer
 Tuira Ramea, Statistics Officer
 Ana Roi, Mii Rongo, Coralie Anne Towgood,
 and Mata Opuariki, Data Processing Staff

